



# Datasheet

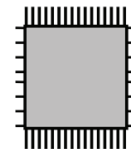
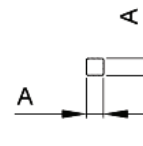
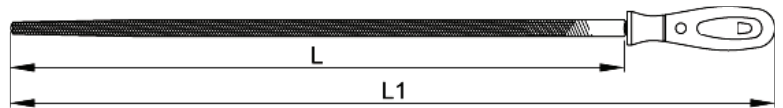
## RS Pro Round Files


EN



### Product feature:

- High carbon content steel
- Double-cut surfaces
- Tapered to the tip
- Type of cut: 1 = Bastard, 2 = Second, 3 = Smooth



RS CODE NO	L mm - inch	A mm	L1 mm	TYPE of CUT	
1923689	200 - 8"	8	315	1	115