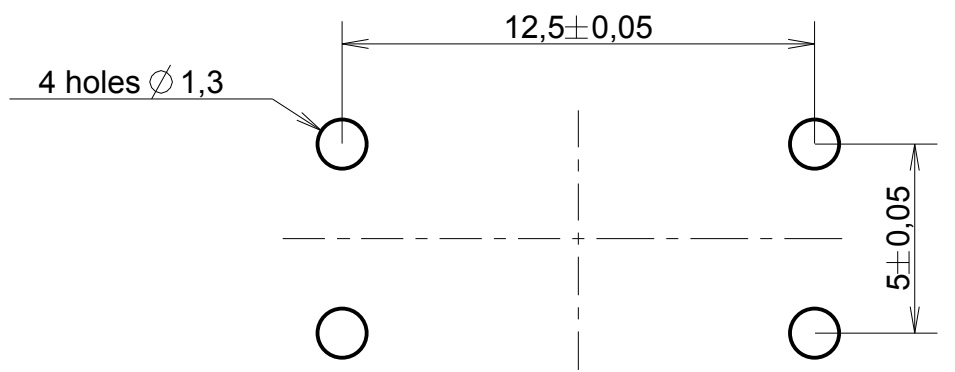
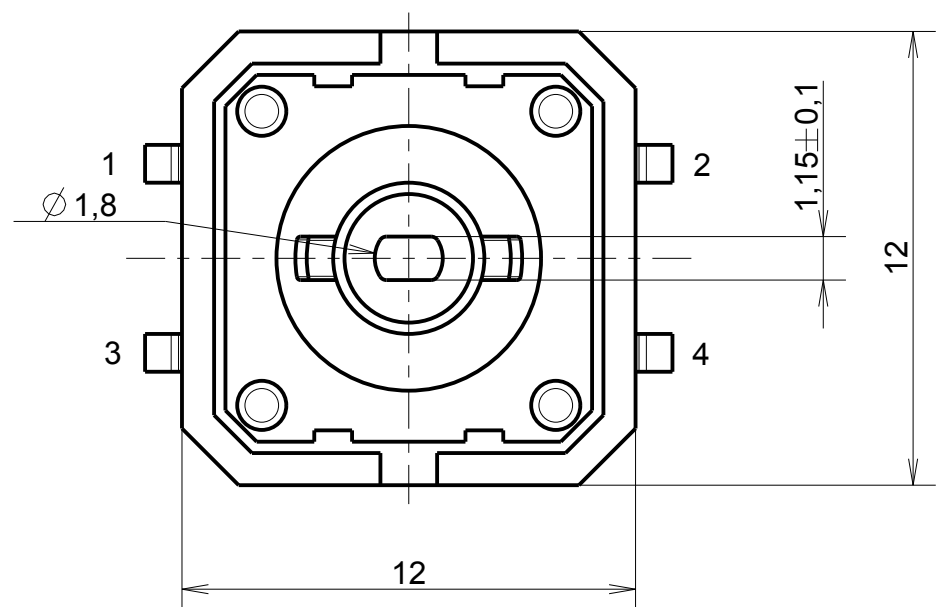


SCHEMATIC



RECOMMENDED PCB LAYOUT

PTS 125 SX12-2 LFS

Actuation Force  
M: 180 gf  
K: 250gf

Y97AT21A2LAFP	PTS 125 SM12-2 LFS	180gf	Brown
Y97AT21A5LAFP	PTS 125 SK12-2 LFS	250 gf	Black
PART NUMBER	DESIGNATION	ACTUATOR FORCE	ACTUATOR COLOR

Material: .	Traitement: .	Protection: .	Volume: .
UNLESS OTHERWISE : - DIMENSIONS GIVEN BEFORE PROTECTION - BURRS AND SHARP EDGES DELETED		ANGULAR TOLERANCE ± 3° LINEAR TOLERANCE ± 0,2 SURFACE FINISH Ra	CRITICAL DIMENSIONS SPC DIMENSIONS
CREATE BY RIFFAUD	DATE 09/04/14		MODIFIED ON THIS REV. ●
CHECKED BY Hurtard, Stephane	DATE 26/06/14	MODIFICATION see revision table on the first sheet	
APPROVED BY Kubat, Laurent	DATE 26/06/14	FILENAME CU97M05125FP STATE OFFICIEL	DRAWING DESCRIPTION
		 SCALE 5,00	PTS 125 SX12-2 LFS
		SIZE A3 SHEET 1 / 1	DRAWING NUMBER CU97M05125FP REV -
BP 359 - 39105 Dole - FRANCE -			

THIS DRAWING IS THE PROPERTY OF G&K COMPONENTS SAS  
 IT CAN NOT BE REPRODUCED OR TRANSMITTED  
 WITHOUT THE WRITTEN PERMISSION OF G&K COMPONENTS SAS