

Rittal – The System.

Faster – better – everywhere.

Lock insert – VX 8618.301

Date : Jun 14, 2019

ENCLOSURES

POWER DISTRIBUTION

CLIMATE CONTROL

IT INFRASTRUCTURE

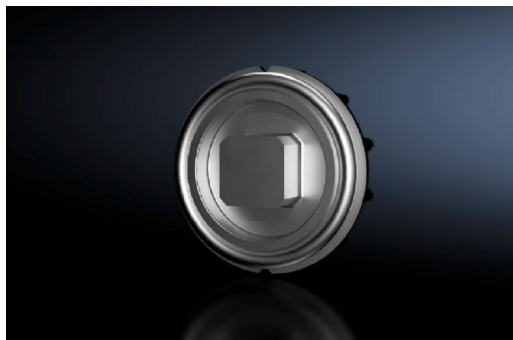
SOFTWARE & SERVICES

FRIEDHELM LOH GROUP



Lock insert – VX 8618.301

created: 14.06.2019 on www.rittal.com/com-en



Product description

Material: Die-cast zinc

Product features

Installation options: Comfort handle for lock inserts

Lock insert: 8 mm square

Packs of: 1 pc(s).

Weight/pack: 0.02 kg

Copper weight (kg per piece): 0

EAN: 4028177921825

Customs tariff number: 83016000

ETIM 6.0: EC000743

ETIM 5.0: EC000743

eCl@ss 8.0/8.1: 27409218

eCl@ss 7.0/7.1: 27409218

eCl@ss 6.0/6.1: 27409218

eCl@ss 5.1/5.1.4: 27189256

Product description: VXLock insert, type G, die-cast zinc, 8 mm square
