
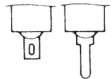

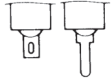










EIGHT SWITCH SERIES

8 Switch Series Selection Table

Part No.	Name	Actuator shape	Number of poles	Switching function	Terminal style	Page
8H	Lever · Rocker		1 · 2	ON — ON ON — OFF — ON (ON) — OFF — (ON) ON — OFF — (ON) ON — (ON)	 S/D P/C	338
8HD	Lever · Rocker (Dust Proof)		1 · 2		 S/D P/C	340
8M	Small Lever Rocker		1 · 2 · 3 · 4		 S/D	342
8V—M	Small Lever · Rocker PC		1 · 2		 P/C	344
8Q	Large Lever · Rocker		1 · 2 · 3 · 4		 S/D	346
8V—Q	Large Lever · Rocker PC		1 · 2		 P/C	348

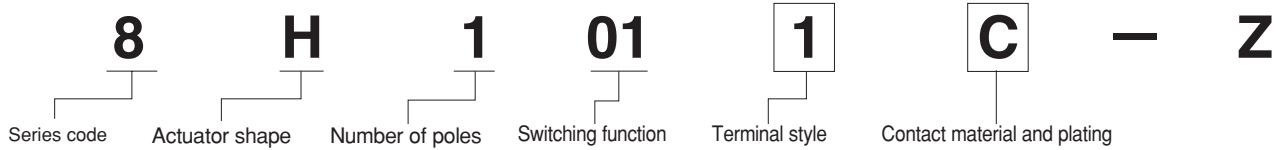
●S/D : Show Solder terminal.
 ●P/C : Show PC terminal.

Note: For overseas standards, see page 575.

8 Switch Series Common Specifications

Contact specs.		Silver	Gold plated
Rating	Max.	125VAC 6A 250VAC 3A 30VAC 4A	20VDC 25mA
Initial contact resistance		10mΩ Max. (2~4VDC 1A)	20mΩ Max. (200 μVAC 1.5mA)
Initial dielectric strength		AC1500V 1 Minute	
Initial insulation resistance		1000MΩ Min.	(500VDC)
Electrical life	Alternate type	50,000 cycles	
	Momentary type	25,000 cycles	
Operating temperature range		-30~+85°C	
Storage temperature range		-40~+85°C	

Part Numbering



Code	Type
H	Lever•Rocker
HD	Lever•Rocker
M	Small Lever•Rocker
V-M	Small Lever•Rocker
Q	Large Lever•Rocker
V-Q	Large Lever•Rocker

Fig.	Number of poles
1	1 pole
2	2 poles
3	3 poles
4	4 poles

Fig.	Switching function
01	ON - ON
02	ON - OFF - ON
04	(ON)-OFF-(ON)
05	ON - OFF -(ON)
06	ON - (ON)

Fig.	Terminal style
1	Solder Terminal
2	PC Straight

Code	Contact material	Plating
None	Bs+Ag or Cu+Ag	Ag
C	Bs+Ag or Cu+Ag	Ni+Au

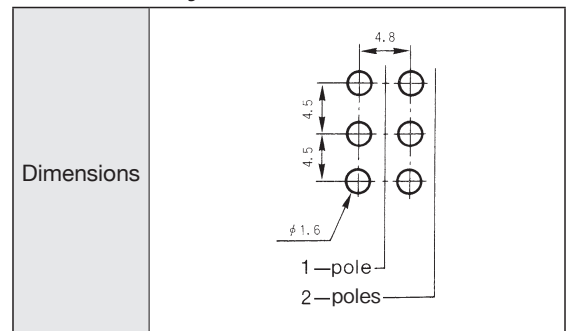
Bs=Brass.
 Cu=Copper.
 Ag=Silver.
 Ni=Nickel.
 Au=Gold

Note : For some products, the part numbers according to the above-stated combinations are not registered yet. Check the Table of Part Numbers for availability.

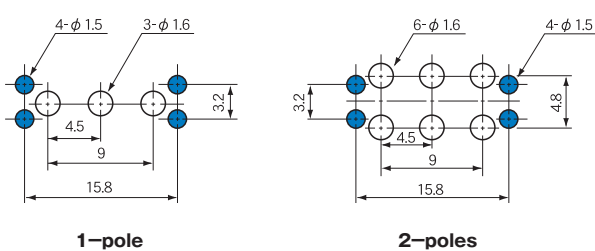
Terminal Styles

Terminal style	Solder Terminal (Style : 1)	PC Straight (Style : 2)
Dimensions		

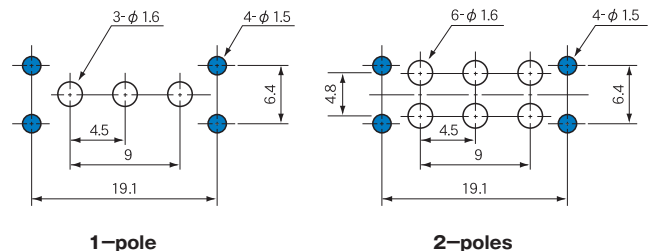
PC Hole Layouts



8V-M/PC Hole Layouts



8V-Q/PC Hole Layouts



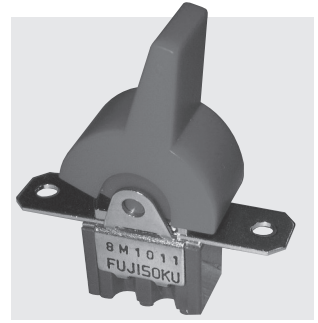
(ON) : Momentary.

8M

Small Lever & Rocker Switches

UL CSA

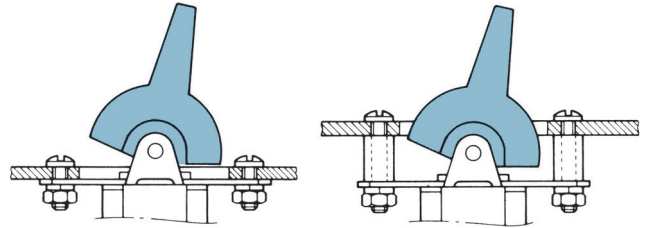
RoHS Compliant



■ Features

The **8M** Small Lever & Rocker Switch is similar to the **8A** type except that 8M type has a mounting plate. Levers and rockers are available in four matted colors that give a sober atmosphere. Choose the suitable one for the panel design. For the mounting method, see the following figure.

■ Mounting Method



■ Standard Accessories

《Supplied separately》

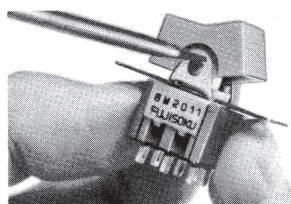
Part name	Lever	Rocker	Lever	Rocker
Dimensions				
White	140000050427	140000480509	140000050929	140000481531
Red	140000050428	140000480510	140000050930	140000481532
Black	140000050429	140000480511	140000050931	140000481533
Gray	140000050450	140000480522	140000050932	140000481534
Panel Cut-Out Dimensions				

● Specify either one of Lever or Rocker in part number when placing an order.

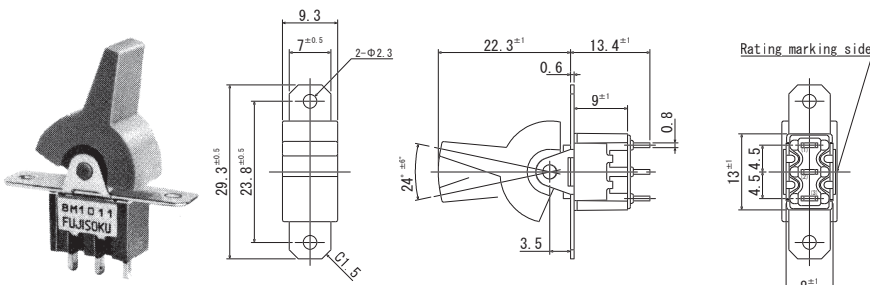
■ Mounting the Lever & Rocker

Press the selvage part of the lever/rocker with a screwdriver to fix it.

Some products in the Table of UL and CSA-Approved Products are not registered yet. Before placing the order, check with our Sales Department.



SPDT

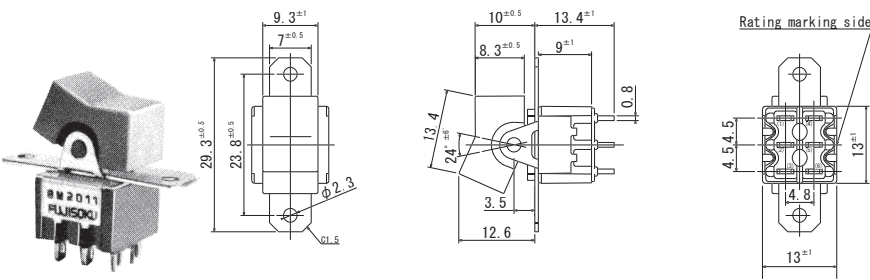


Mount with **Lever**

Terminal numbers are not shown on the bottom of the switch.

Switching function	Viewed from rating marking side		
Part No.			
8M1011-Z	ON	-	ON
▲8M1011C-Z	ON	-	ON
★8M1021-Z	ON	OFF	ON
▲8M1021C-Z	ON	OFF	ON
★8M1041-Z	(ON)	OFF	(ON)
▲8M1051-Z	ON	OFF	(ON)
★8M1061-Z	ON	-	(ON)
Connecting terminals	2-3	-	2-1

DPDT

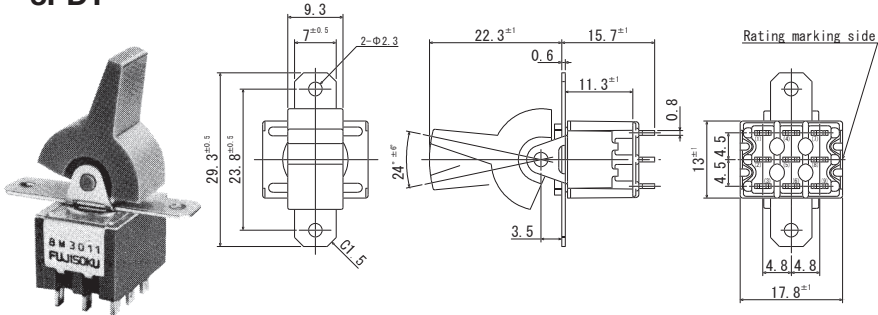


Mount with **Rocker**

Terminal numbers are not shown on the bottom of the switch.

Switching function	Viewed from rating marking side		
Part No.			
8M2011-Z	ON	-	ON
▲8M2011C-Z	ON	-	ON
★8M2021-Z	ON	OFF	ON
▲8M2021C-Z	ON	OFF	ON
★8M2041-Z	(ON)	OFF	(ON)
★8M2051-Z	ON	OFF	(ON)
▲8M2061-Z	ON	-	(ON)
Connecting terminals	2-3 5-6	-	2-1 5-4

3PDT

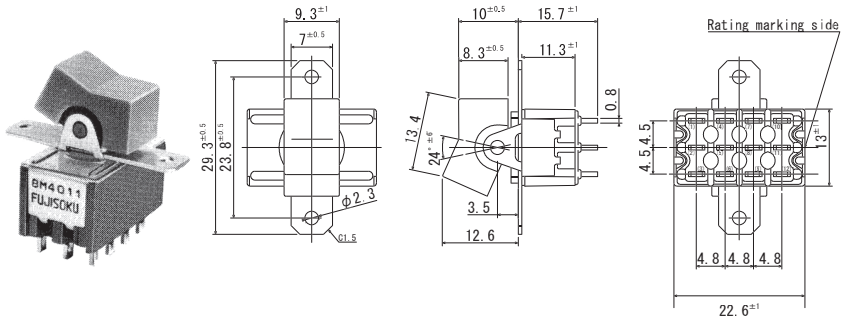


Mount with **Lever**

Terminal numbers are not shown on the bottom of the switch.

Switching function	Viewed from rating marking side		
Part No.			
☆8M3011-Z	ON	-	ON
★8M3021-Z	ON	OFF	ON
Connecting terminals	2-3 5-6 8-9	-	2-1 5-4 8-7

4PDT



Mount with **Rocker**

Terminal numbers are not shown on the bottom of the switch.

Switching function	Viewed from rating marking side		
Part No.			
☆8M4011-Z	ON	-	ON
★8M4021-Z	ON	OFF	ON
Connecting terminals	2-3 8-9	5-6 11-12	2-3 5-4 8-7 11-10

UL、CSA認定品一覧表 (Lever・Rocker Type Only)

UL and CSA listed

■8Switch Series

Poles	Switching function			UL (File No.E43275)						CSA (File No.LR38341)					
				8H	8HD	8M	8V-M	8Q	8V-Q	8H	8HD	8M	8V-M	8Q	8V-Q
1-pole	101□	ON	—	ON	○	○	○	○	○	○	○	○	○	○	○
	102□	ON	—	OFF —	ON	○	○	○	○	○	○	○	○	○	○
	104□	(ON)	—	OFF —	(ON)	○	○	○	○	○	○	○	○	○	○
	105□	ON	—	OFF —	(ON)	○	○	○	○	○	○	○	○	○	○
	106□	ON	—	(ON)	○	○	○	○	○	○	○	○	○	○	○
2-poles	201□	ON	—	ON	○	○	○	○	○	○	○	○	○	○	○
	202□	ON	—	OFF —	ON	○	○	○	○	○	○	○	○	○	○
	204□	(ON)	—	OFF —	(ON)	○	○	○	○	○	○	○	○	○	○
	205□	ON	—	OFF —	(ON)	○	○	○	○	○	○	○	○	○	○
	206□	ON	—	(ON)	○	○	○	○	○	○	○	○	○	○	○
3-poles	301□	ON	—	ON	○	○	○	○	○	○	○	○	○	○	○
	302□	ON	—	OFF —	ON	○	○	○	○	○	○	○	○	○	○
4-poles	401□	ON	—	ON	○	○	○	○	○	○	○	○	○	○	○
	401□	ON	—	OFF —	ON	○	○	○	○	○	○	○	○	○	○

- (1) □ shows the terminal type of ① : Solder terminal; ② : PC terminal.
- (2) Some products in the Table of UL and CSA Listed are not registered yet. Before placing the order, check with our Sales Department.
- (3) For the registered products, refer to Table of Part Numbers of respective Series products.
- (4) When the UL and CSA approved products are required, specify "UL /CSA approved Product" when placing the order. The products will be delivered with the UL or CSA marking.

A series

Poles	Part number	Switching function	UL (※1)
1 pole	ALE1D-2M4-10-Z	ON -OFF- ON	○
	ALE1D-5M4-10-Z		○
	ALE1E-2M4-10-Z	ON -OFF- ON	○
	ALE1E-5M4-10-Z		○
	ALE1F-2M4-10-Z	ON - (ON)	○
	ALE1F-5M4-10-Z		○
	ALE1G-2M4-10-Z	(ON) -OFF- (ON)	○
	ALE1G-5M4-10-Z		○
	ALE1H-2M4-10-Z	ON -OFF- (ON)	○
	ALE1H-5M4-10-Z		○
2 poles	ALE2D-2M4-10-Z	ON - ON	○
	ALE2D-5M4-10-Z		○
	ALE2N-2M4-10-Z	ON -OFF- ON	○
	ALE2E-2M4-10-Z		○
	ALE2E-5M4-10-Z	ON - (ON)	○
	ALE2P-2M4-10-Z		○
	ALE2F-2M4-10-Z	(ON) -OFF- (ON)	○
	ALE2F-5M4-10-Z		○
	ALE2R-2M4-10-Z	ON -OFF- (ON)	○
	ALE2G-2M4-10-Z		○
	ALE2G-5M4-10-Z	ON -OFF- (ON)	○
	ALE2S-2M4-10-Z		○
	ALE2H-2M4-10-Z	ON -OFF- (ON)	○
	ALE2H-5M4-10-Z		○
	ALE2T-2M4-10-Z	○	

Miniature Rocker Switches

Poles	Part number	Switching function	UL (※1)	CSA (※2)
1 pole	HLA112A	ON-OFF	○	○
	HLA112A12		○	○
	HLC112A		○	○
	HLC112A12		○	○
	HLS112A		○	○
	HLS112A12		○	○
	STE115A10-Z		○	○
	STE115A12-Z		○	○
2 poles	HLA208K	ON-OFF	○	○
	HLA208K12		○	○
	HLC208K		○	○
	HLC208K12		○	○
	HLS208K		○	○
	HLS208K12		○	○

Miniature Power Switches

Poles	Type	Switching function	UL (※1)	CSA (※2)
1 pole	HLA112D	ON-ON	○	○
	HLA112D12		○	○
	HLC112D		○	○
	HLC112D12		○	○
	HLS112D		○	○
	HLS112D12		○	○
	STE115D10-Z		○	○

Poles	Type	Switching function	UL (※1)	CSA (※2)
2 poles	HLA208N	ON-ON	○	○
	HLA208N12		○	○
	HLC208N		○	○
	HLC208N12		○	○
	HLS208N		○	○
	HLS208N12		○	○

Miniature Rocker Switches

Poles	Part number	Switching function	UL (※1)	CSA (※2)	VDE (※4)	SEMKO (※5)	Poles	Part number	Switching function	UL (※1)	CSA (※2)	VDE (※4)	SEMKO (※5)			
1-pole	SLE6A	ON-OFF	○	○	○	○	1-pole	SLE10A	ON-OFF	○	○	○	○			
	SLE6A-5		○	○	○	○		SLE10A-5		○	○	○	○			
	SLE6A-6		○	○	○	○		SLE10A-6		○	○	○	○			
	SLE6A-7		○	○	○	○		SLE10A-7		○	○	○	○			
	SLE6A-8		○	○	○	○		SLE10A-8		○	○	○	○			
	SLE6A2		○	○	○	○		SLE10A2		○	○	○	○			
	SLE6A2-5		○	○	○	○		SLE10A2-5		○	○	○	○			
	SLE6A2-6		○	○	○	○		SLE10A2-6		○	○	○	○			
	SLE6A2-7		○	○	○	○		SLE10A2-7		○	○	○	○			
	SLE6A2-8		○	○	○	○		SLE10A2-8		○	○	○	○			
	SLE6A4		○	○	○	○		SLE10A4		○	○	○	○			
	SLE6A4-5		○	○	○	○		SLE10A4-5		○	○	○	○			
	SLE6A4-6		○	○	○	○		SLE10A4-6		○	○	○	○			
	SLE6A4-7		○	○	○	○		SLE10A4-7		○	○	○	○			
	SLE6A4-8		○	○	○	○		SLE10A4-8		○	○	○	○			
	SLE6A5		○	○	○	○		SLE10A5		○	○	○	○			
	SLE6A5-5		○	○	○	○		SLE10A5-5		○	○	○	○			
	SLE6A5-6		○	○	○	○		SLE10A5-6		○	○	○	○			
	SLE6A5-7		○	○	○	○		SLE10A5-7		○	○	○	○			
	SLE6A5-8		○	○	○	○		SLE10A5-8		○	○	○	○			
	SLE6D		ON-ON	○	○	○		○		SLE10D	ON-ON	○	○	○	○	○
	SLE6D-5			○	○	○		○		SLE10D-5		○	○	○	○	
	SLE6D-6			○	○	○		○		SLE10D-6		○	○	○	○	
	SLE6D-7			○	○	○		○		SLE10D-7		○	○	○	○	
	SLE6D-8			○	○	○		○		SLE10D-8		○	○	○	○	
	SLE6D2			○	○	○		○		SLE10D2		○	○	○	○	
	SLE6D2-5			○	○	○		○		SLE10D2-5		○	○	○	○	
	SLE6D2-6			○	○	○		○		SLE10D2-6		○	○	○	○	
SLE6D2-7	○	○		○	○	SLE10D2-7	○	○	○	○						
SLE6D2-8	○	○		○	○	SLE10D2-8	○	○	○	○						
SLE6D4	○	○		○	○	SLE10D4	○	○	○	○						
SLE6D4-5	○	○		○	○	SLE10D4-5	○	○	○	○						
SLE6D4-6	○	○		○	○	SLE10D4-6	○	○	○	○						
SLE6D4-7	○	○		○	○	SLE10D4-7	○	○	○	○						
SLE6D4-8	○	○		○	○	SLE10D4-8	○	○	○	○						
SLE6D5	○	○		○	○	SLE10D5	○	○	○	○						
SLE6D5-5	○	○		○	○	SLE10D5-5	○	○	○	○						
SLE6D5-6	○	○		○	○	SLE10D5-6	○	○	○	○						
SLE6D5-7	○	○		○	○	SLE10D5-7	○	○	○	○						
SLE6D5-8	○	○		○	○	SLE10D5-8	○	○	○	○						

(※1) UL File No. E43275

(※4) VDE File No. 120752

(※2) CSA File No. LR38341

(※5) SEMKO File No. 614385