

## PASE30-XL-N

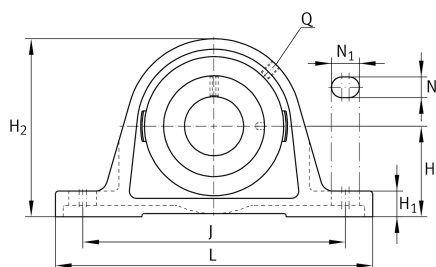
Plummer block housing unit

Schaeffler ID:  
0945128500000

Plummer block housing units PASE, cast iron housing, radial insert ball bearing with eccentric locking collar, P seals

X-life

### Technical information



#### Main Dimensions & Performance Data

d	30 mm	Bore diameter
L	158 mm	Length total
H <sub>2</sub>	82 mm	Height
	1.13 kg	Weight

#### Mounting dimensions

J	117.5 mm	Distance fixing bore
N	14 mm	Width (slot)
N <sub>1</sub>	22 mm	Length (slot)

#### Dimensions

H	42.9 mm	Distance shaft axis
A	40 mm	Width (base)
A <sub>1</sub>	25 mm	Width (head)
H <sub>1</sub>	17 mm	Height (base)
B <sub>1</sub>	35.8 mm	Locking collar total width
S <sub>1</sub>	26.8 mm	Distance of raceway to locking collar
Q	M6	Connection thread lubrication

#### Additional information

GRAE30-XL-NPP-B	Bearing designation
KASK06	Protecting cap

