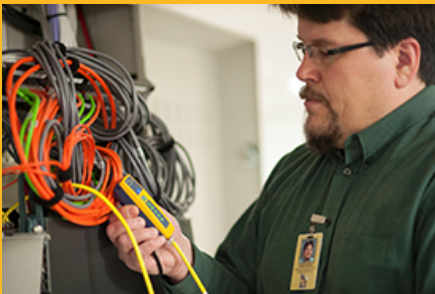


Datasheet: Validate Network Connectivity in Less Than 10 Seconds

Key features include:

- Quick and simple to use
- Understand if a network connectivity issue is in the PC or the network and if it's the network, where
- Zero touch reporting automatically sends every test to Link-Live Cloud Service saving time and ensuring accuracy in reporting
- Priced to fit every IT budget as a personal tool everyone can have allowing teams to solve problems faster without the need for a shared device



Robert Barker, Enterprise Systems Coordinator, Lebanon R-III School District. Read his success story at flukenetworks.com/LinkSprinter



LinkSprinter is a pocket-sized Ethernet tester that provides complete end-to-end network connectivity testing and automated cloud based reporting all with the touch of a button. LinkSprinter is used by PC help desk, front line technicians, network engineers and many others, to validate network connectivity, cable, and that power is correctly being applied to PoE powered devices.

Simply connect an Ethernet cable and the LinkSprinter goes to work checking the connection path from wall jack to internet and in less than 10 seconds, you'll know that status of the connection path through color coded LEDs.



NETWORKWORLD



LinkSprinter Awards

Big Things Come In Small Packages

Don't let LinkSprinter's small stature fool you, it's packed with capability and provides several custom configuration options that can be set per tester or within Link-Live Cloud Service Job Pro and the setting is pushed to all units enabling better workforce automation.

LinkSprinter runs a series of standardized tests to ensure consistency in workflow and documentation across team members regardless of skill level.

- **Power Over Ethernet (PoE)**

Check to make sure you can power a phone, security camera or Access Point through a specific port. The LinkSprinter Network Tester can even run without batteries on PoE.

- **Link to the Switch**

Perform a switch test, which indicates switch name, model, slot, port and VLAN you are connected to using CDP/LLDP/EDP. Know your available speed and duplex settings.

- **DHCP Connection**

Confirm that the DHCP server is running and responsive. Request an IP address, get your subnet information, and identify the default gateway and DNS server.

- **Gateway Connection**

Verify the gateway/router address and reachability by pinging the device.

- **Internet Connection**

Confirm cloud connectivity or internal service reachability. Verify DNS server lookup and application port connectivity.

Quick Answers to Common Tasks

- **Moves, Adds, Changes**

Validate proper connectivity including IP subnet and VLAN so you're ready when devices arrive.

- **PoE Validation**

Ensure switch port provisioning and cabling before installing cameras, phones, or wireless access point.

- **PC Help Desk**

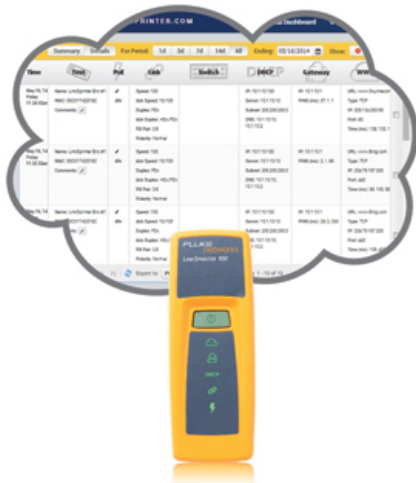
Is the problem in the PC or the Network? If it's the network, find out where so you can escalate with facts.

- **Gateway Connection**

Verify the gateway/router address and reachability by pinging the device.

- **Remote Site Network Connectivity Validation**

Leave one on site, even an office assistant can run a test while the NOC sees the detailed result appear on the Link-Live Cloud Service dashboard.



LinkSprinter 100



LinkSprinter 200



LinkSprinter 300

LinkSprinter Features by Model

	100	200	300
Diagnose and test Power over Ethernet (PoE), Link to the switch, DHCP, Gateway, and Internet connection	X	X	X
Get VLAN, switch name, and port information via CDP/LLDP/EDP for your managed switches	X	X	X
Expert network troubleshooting techniques delivered to color graded LEDs	X	X	X
All test results are sent to the Link-Live Cloud Service	X	X	X
Get detailed test results sent directly to your email	X	X	X
Access your test results through your phone's browser by connecting to the built-in Wi-Fi access point		X	X
See cable fault and distance to open or short			X
Blink light on switch port			X

Link-Live Cloud Service

Link-Live Cloud Service is a centralized management, collaboration and archival dashboard for network connectivity test results from LinkSprinter and LinkRunner AT hand-held network testers. Results are automatically sent to Link-Live, providing organizations with the ability to quickly and easily document the network, provide proof of performance, and better manage jobs and staff efficiency.

Link-Live offers two levels, Essentials and Job Pro. Essentials comes standard with all models of LinkSprinter and LinkRunner AT, and provides important test results management and reporting capabilities. Job Pro expands Essentials into a more complete test results management platform providing greater job visibility, project control, tester, and user management.

Link-Live Essentials <i>Comes Standard with all models of LinkSprinter and LinkRunner AT</i>	Link-Live Job Pro <i>Adds capability to Essentials and is available in 1 and 3 year subscription offerings</i>
Manage, sort and analyze network test results	Job folders to simplify job and project management - for example create a folder hierarchy representing job, site, building, floor and work area and organize results accordingly
Filter results by time, user, network, errors	Automatic uploading of test results into a user-specified folder
General reports in .pdf or .csv	Attach photos
Add comments to each test	Custom cover page and analytical summary report
Download firmware updates	On tester persistent comments attach to multiple tests automatically
Download AutoTest profiles to remote testers	

The screenshot displays the Link-Live Dashboard interface. At the top, there's a navigation bar with 'FLUKE networks LINK-LIVE.COM', 'Dashboard', 'Units', and 'Account'. Below this is a search bar and a filter menu showing 'Summary', 'Details', and 'For: 1d 3d 7d 14d All'. The main content area is a table with columns: Time, Test, POE, Link, Switch, DHCP, Gateway, and WWW. Three test entries are visible, each with detailed parameters like Name, MAC, Device, Profile, Pos, Speed, Adx Speed, Duplex, Adv Duplex, RX Pair, Polarity, Optical, Name, Type, ED, Model, IP/MAC, Port, Server, Subnet, DNS, and Ping results. The bottom of the dashboard shows 'Page 1 of 4', 'Export to: PDF CSV', and 'Displaying 1-20 of 73'.

Link-Live Dashboard

Technical Specifications

Environmental	
Operating Temperature and Relative Humidity	32°F to 122°F (0°C to 50°C), Relative Humidity 5% to 90% Non-condensing
Storage Temperature	-4°F to 140°F (-20°C to 60°C)
Shock and Vibration	Random 2g, 5 Hz – 500 Hz (class 2), 1 m drop
Safety	CAN/CSA-C22.2 No. 61010-1-12, UL Std. No. 61010-1 (3rd Edition), IEC61010-1:2010, Pollution degree 2
Altitude	Operating: 13,123 ft. (4,000 m) Storage: 39,370 ft. (12,000 m)
EMC	EN 61326-1:2006
Certifications and Compliance	Conforms to relevant European Union directives Conforms to relevant Australian standards Listed by the Canadian Standards Association Conforms to relevant FCC standards

General	
Dimensions	4.36" x 1.6" x 1.28" (11.07 cm x 4.06 cm x 3.25 cm)
Weight with batteries	Model 100: 0.250 lb (0.113 kg) Model 200/300: 0.255 lb (0.116 kg)
Battery	2 AA Alkaline

Wi-Fi Access Point (Model 200 and 300)	
Specification Compliance	IEEE 802.11b/g
Frequency Channels	802.11 Channels 1 thru 11 default is 11
Operating Frequency	2.412 ~ 2.484 GHz, ISM Band
Regulatory Domain	EN 301 489-1/17
Browser	Internet Explorer 9.0, Firefox 3.6, Chrome 5.0, Safari 5.1 (minimum revision)

Ordering Guide

Item Name	Description
LSPRNTR-100	Includes 1 LinkSprinter 100, wrist strap, Link-Live Cloud Service Essentials
LSPRNTR-100-10PK	Includes 10 LinkSprinter 100's for the price of 9, wrist straps, Link-Live Cloud Service Essentials
LSPRNTR-100-5PK	Includes 5 LinkSprinter 100's at a reduced price, wrist straps, Link-Live Cloud Service Essentials
LSPRNTR-200	Includes 1 LinkSprinter 200, wrist strap, Link-Live Cloud Service Essentials
LSPRNTR-200-10PK	Includes 10 LinkSprinter 200's for the price of 9, wrist straps, Link-Live Cloud Service Essentials
LSPRNTR-200-5PK	Includes 5 LinkSprinter 200's at a reduced price, wrist straps, Link-Live Cloud Service Essentials
LSPRNTR-300	Includes 1 LinkSprinter 300, wrist strap, Link-Live Cloud Service Essentials
LSPRNTR-300-10PK	Includes 10 LinkSprinter 300's for the price of 9, wrist straps, Link-Live Cloud Service Essentials
LSPRNTR-300-5PK	Includes 5 LinkSprinter 300's at a reduced price, wrist straps, Link-Live Cloud Service Essentials
LSPRNTR-HOLSTER	Belt attachable holster carries one LinkSprinter and includes short patch cable and business card holder
LLPRO-TIER1-1Y	Link-Live Cloud Service Job Pro. Single price point provides 1 year of service for 1-10 testers that can be any mix of LinkSprinter or LinkRunner AT
LLPRO-TIER1-3Y	Link-Live Cloud Service Job Pro. Single price point provides 3 years of service for 1-10 testers that can be any mix of LinkSprinter or LinkRunner AT
LLPRO-TIER2-1Y	Link-Live Cloud Service Job Pro. Single price point provides 1 year of service for 11-20 testers that can be any mix of LinkSprinter or LinkRunner AT
LLPRO-TIER2-3Y	Link-Live Cloud Service Job Pro. Single price point provides 3 years of service for 11-20 testers that can be any mix of LinkSprinter or LinkRunner AT
LINKSOLUTIONS-KIT	Includes 1 LinkRunner AT 2000 with standard components, 2 LinkSprinter 300's, 2 LinkSprinter Holsters, Link-Live Cloud Service Essentials

For a complete listing of LinkSprinter models and accessories, visit www.flukenetworks.com/linkssprinter