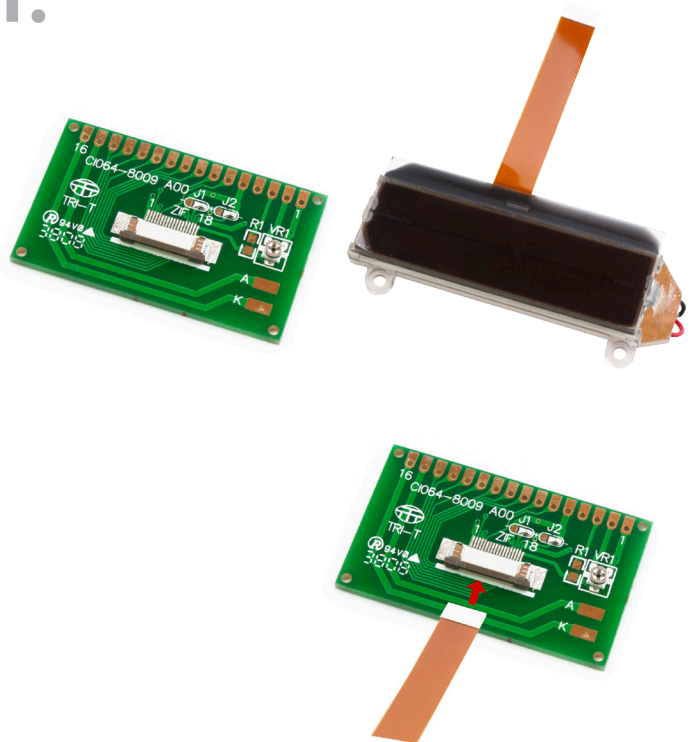


IDB-CI064-4001-xx-01.

Overview

IDS have designed a break-out board for our CI064-4001-xx range of standard COG displays.

The IDB-CI064-4001-xx-01. enables our CI064-4001-xx COG displays to be used with the industry standard 16 pin interface, and on the standard 0.1" header, with the built-in options for internal or external contrast control and character position on screen.



LCD Connection

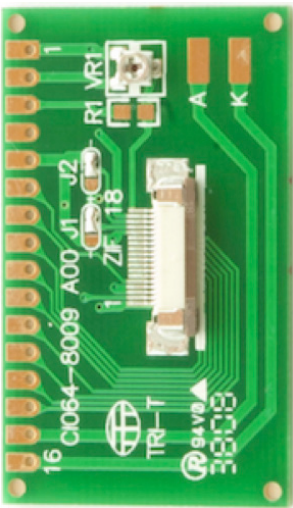
Please pull out the Brown Flexi Clamp

Insert the LCD Flexi with the white side up

Push the brown Flexi Clamp Back in place

Pin Description

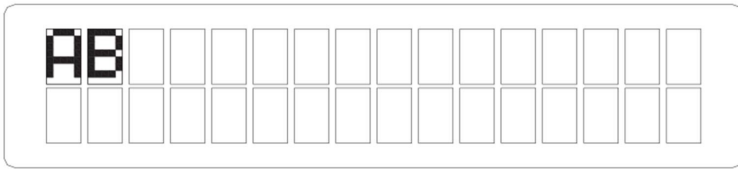
Pin No.	Symbol	Function
1	Vss	Power Supply - 0v
2	Vdd	Power Supply - +5v
3	Vo	Voltage for LCD driving
4	RS	Selects register date "H" and instruction "L"
5	R/W	Use as read/write select input
6	E	Use as read/write enable signal
7	DB0	Display Data
8	DB1	Display Data
9	DB2	Display Data
10	DB3	Display Data
11	DB4	Display Data
12	DB5	Display Data
13	DB6	Display Data
14	DB7	Display Data
15	LED+	Anode of LED Backlight
16	LED-	Cathode of LED Backlight



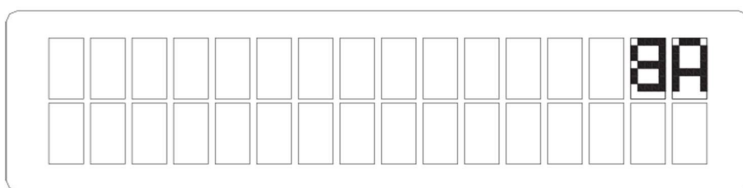
Screen Configuration

J1 and J2 control the position and orientation of the characters. The default setting is J1=1 , J2=0.

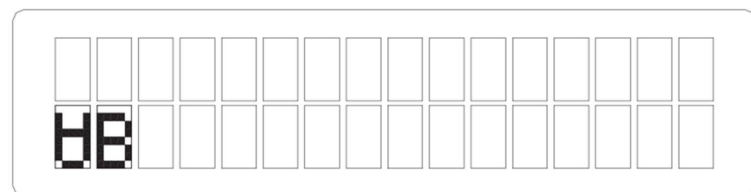
J1=1 , J2=0



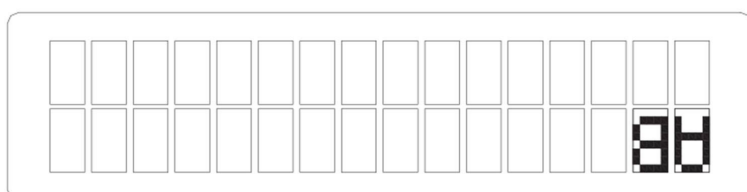
J1=1 , J2=1



J1=0 , J2=0



J1=0 , J2=1

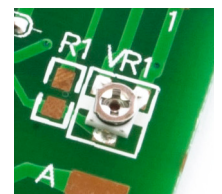


Contrast Control

The IDB-CI064-4001-xx-01. has a built-in contrast circuit. The default setting is for internal contrast control.

Contrast is varied by varying the onboard potentiometer.

If you wish to use external contrast control please put a zero ohm resistor across R1.



Backlight Control

The IDB-CI064-4001-xx-01. has solder lay on pads for the backlight wires. This directly connects them to the edge pin header.

