

1

2

3

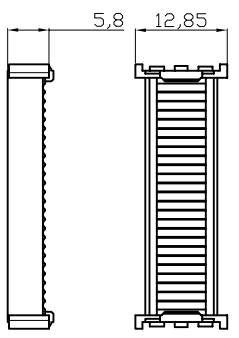
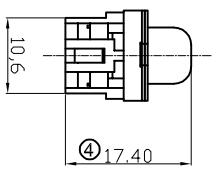
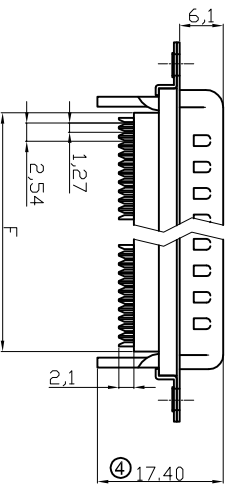
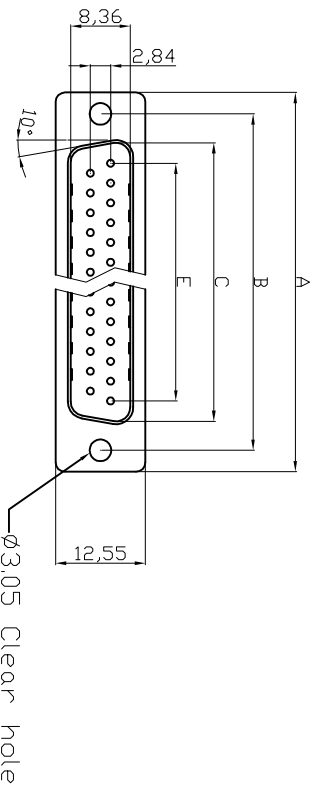
4

5

6

7

Male



Cover



Strain Relief

Without Insulator Support

Positions	A	B	C	E	F
9	30.81	24.99	16.92	11.08	13.10
15	39.20	33.30	25.25	19.39	20.70
25	53.04	47.04	38.96	33.24	33.68
37	69.40	63.50	55.42	49.86	50.30

RoHS compliant
Unit:mm

1

2

3

4

5

6

7

Scale	Free	⑥	Update the operating temperature	05.06.2014	Winnle
TOLERANCE		⑤	Correct the UL-File number	03.04.2014	Winnle
X.	±0.38	④	Update 17.58&17.28 into 17.40&17.10mm	07.03.2014	Winnle
X.X	±0.25	③	Update the wire specification	28.06.2013	Winnle
X.XX	±0.13	②	Add the wire specification	06.03.2013	Winnle
DIM	TOL	①	Add the UL file No.	18.10.2012	Winnle
X.°	±3°				
X.X°	±1.0°				
Angle	TOL		Modification	Date	Name



Customer-No.		
ASSMANN WSW-No.	A-DXF xx LP11/2	
Drawing-No.	ASS 4891 CO	rev06
Replace	Sheet 1/2	

Product Specification

Material

Insulator : Glass-filled Thermoplastic PBT, UL94V-0,Black
 Contact : Copper alloy, plating gold flash selective gold
 Shell : Steel, 1000" Tin Over 500" min Copper

Electrical

Contact Resistance : 20 milliohms Max at 1 AMP DC.
 Insulation Resistance : 1000 megohms at 500 VDC.
 Dielectric Withstanding Voltage : 1000 VAC/rms 60Hz for 1 minute
 Current Rating : 3 AMP
 Voltage Rating : 250 VAC/rms 60Hz
 Wire Spec : 26 AWG-28 AWG
 Operating Temperature: -55°C--+105°C

Order Code: A-DXF xx LP11/2

Contact style: F - Female S - Male
 No. of Contacts 09 / 15 / 25 / 37
 Standard: Quality class III

A

B

C

D

E

F

G

H

1

2

3

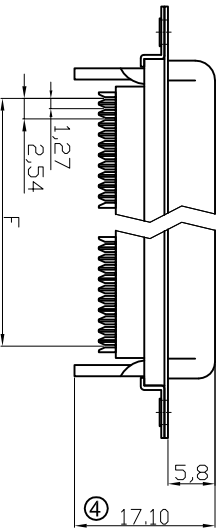
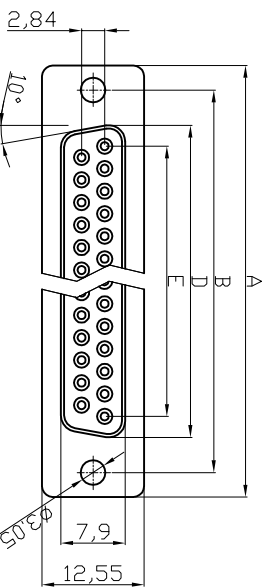
4

5

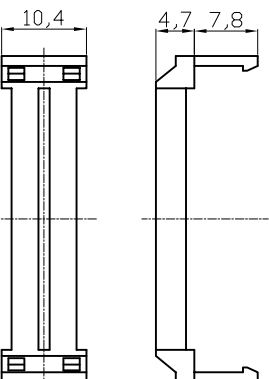
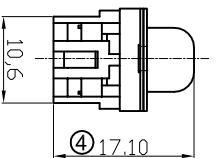
6

7

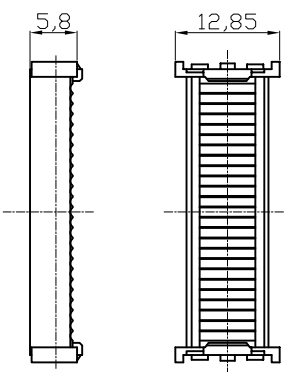
Female



Without Insulator Support



Strain Relief



Cover

- NOTES:**
- MATERIAL**
1. Insulator Material: Glass-Filled Thermoplastic: PBT, UL 94V-0
 2. Contact Material: Copper alloy
 3. Shell :S'P'OC
 4. Plating :selective Gold Flash
- ELECTRICAL**
1. Current Rating : 3 AMP
 2. Voltage Rating : 250 V AC/rms 60 Hz
 3. Contact Resistance: 20mΩ max at 1 AMP DC
 4. Insulation Resistance: 1000MΩ at 500 VDC
 5. Withstand Voltage : 1000V AC/rms 60Hz for 1 minute
 6. Wire Spec: 26 AWG-26 AWG
 7. Operating temperature: -55 °C+105 °C
- UL E No #E198287

Dimensions Positions	A	B	D	E	F
9	30.51	24.99	16.33	11.08	10.16
15	39.20	33.30	24.70	19.39	17.78
25	53.05	47.04	38.40	33.24	30.48
37	69.40	63.50	54.80	49.86	45.72

RoHS compliant

Unit: mm

Scale	Free TOLERANCE	Free TOL	Free Id.	Free Modification	Free Date	Free Name
X.	±0.38	⑥	①	①	①	①
X.X	±0.25	⑤	②	②	②	②
X.XX	±0.13	④	③	③	③	③
DIM	TOL	③	④	④	④	④
X.°	±3°	②	⑤	⑤	⑤	⑤
X.X°	±1.0°	①	⑥	⑥	⑥	⑥
Angle	TOL	①	⑦	⑦	⑦	⑦

Customer-No.

ASSMANN WSW-No.

A-DXF XX LP III/Z

Drawing-No.

ASS 4891 CO rev06

Replace

Sheet 2/2

1

2

3

4

5

6

7

F

E

D

C

B

A

ASSMANN
components