



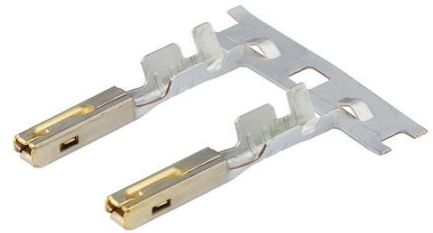
**Part Number :** [330012005](#)

**Product Description :** MX150 Female Terminal for Mat-Sealed Connectors, Gold Plating, 22 AWG, Right Reel Payoff

**Series Number :** 33001

**Status :** Active

**Product Category :** Crimp Terminals



---

## Documents & Resources

### Drawings

[330012005\\_sd.pdf](#)

### Specifications

[AS-33012-002-001.pdf](#)

[AS-33012-002-CH-001.pdf](#)

[AS-33012-002-FR-001.pdf](#)


[PS-33012-002-001.pdf](#)

[TS-33001-002-001.pdf](#)

---

## Product Environment Compliance

### Compliance

GADSL/IMDS	Compliant with Exemption 34; 33
China RoHS	 per SJ/T 11365-2006
EU ELV	Compliant per 2000/53/EC
Low-Halogen Status	Low-Halogen per IEC 61249-2-21
REACH SVHC	Not Contained per D(2025)4165-DC (25 June 2025)
EU RoHS	Compliant per EU 2015/863

### Compliance Statements

- EU RoHS
- REACH SVHC
- Low-Halogen

## Industry Documents

- IPC 1752A Class C
- IPC 1752A Class D
- Molex Product Compliance Declaration
- IEC-62474
- chemSHERPA (xml)

## Substances of Interest

- PFAS

## EU RoHS Certificate of Compliance

## Additional Product Compliance Information

---

## Part Details

### General

Status	Active
Category	Crimp Terminals
Series	33001
Description	MX150 Female Terminal for Mat-Sealed Connectors, Gold Plating, 22 AWG, Right Reel Payoff
Application	Power, Wire-to-Board, Wire-to-Wire, Automotive
Comments	For automatic and semi-automatic crimping, use Left Reel Payoff terminals. See Sales Drawing for Left Reel Payoff Part Numbers.
Product Name	MX150
UPC	822350084123

### Electrical

Current - Maximum per Contact	Contact Molex
Voltage - Maximum	14V DC

### Physical

Gender	Female
Grip Code	22
Material - Metal	High Performance Alloy (HPA)
Material - Plating Mating	Gold

Material - Plating Termination	Tin
Net Weight	0.435/g
Packaging Type	Reel
Plating min - Mating	0.762µm
Plating min - Termination	2.540µm
Termination Interface Style	Crimp or Compression
Wire Insulation Diameter	1.70mm max.
Wire Size (AWG)	22
Wire Size mm <sup>2</sup>	N/A

### Solder Process Data

Lead-Free Process Capability	N/A
------------------------------	-----

### Mates With / Use With

#### Use with Part(s)

Description	Part Number
MX150 Mat-Sealed Dual Row Female Connector Assemblies	<u>33472</u>
MX150 Mat-Sealed Single Row Female Connector Assemblies	<u>33471</u>

---

### Application Tooling

#### Global

Description	Part Number
Extraction Toolkit for MX150 Connectors	<u>2002220700</u>
PremiumGrade Hand Crimp Tool for MX150 Female Terminals, 22-18 AWG	<u>638116000</u>
Hand Crimp Tool Metric 0.5 and 0.75	<u>638116200</u>
Extraction Tool for MX150L, MX150, PT Bulb Socket, iGrid, SPOX, and Wire-to-Motor Terminals	<u>638131500</u>

ServiceGrade Hand Crimp Tool for MX150 Crimp Terminals, 22-14 AWG	<u>640160133</u>
---	------------------

---

This document was generated on Sep 24, 2025