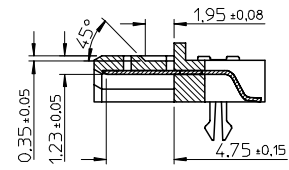
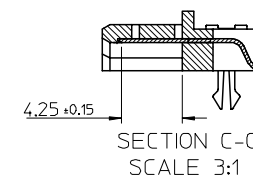
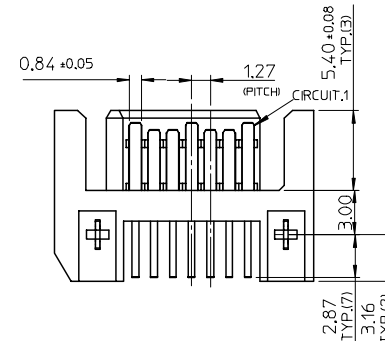
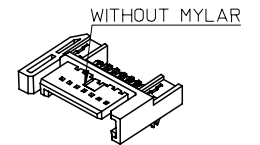
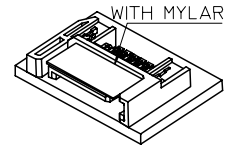
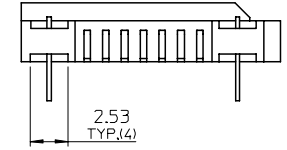
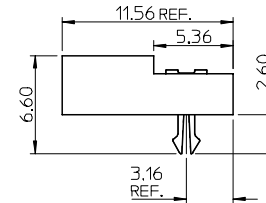
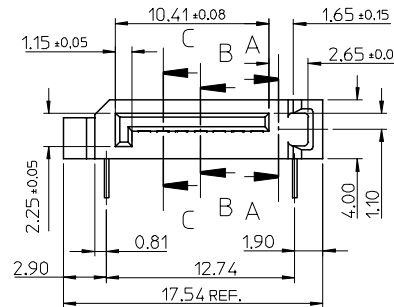
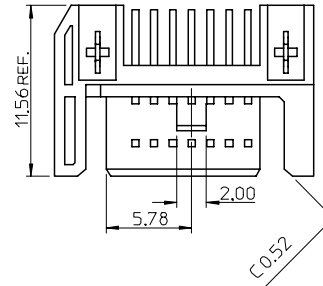


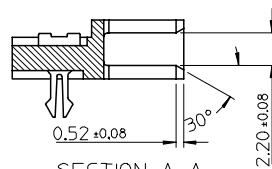
P/N	CONTACT AREA PLATEING	PACKAGE METHOD	REMARK
67490-9220	GOLD FLASH	WITHOUT MYLAR	TIN LEAD
67490-9221	0.76 MICRONS GOLD PLATED	TRAY PACKAGE	
67490-9225	0.38 MICRONS GOLD PLATED	PK-67490-001	
67490-9230	GOLD FLASH	WITH MYLAR	
67490-9231	0.76 MICRONS GOLD PLATED	TAPE REEL	
67490-9235	0.38 MICRONS GOLD PLATED	PK-67490-000	
67490-9240	GOLD FLASH	WITH MYLAR	PURE TIN
67490-9241	0.76 MICRONS GOLD PLATED	TUBE PACKAGE	
67490-9245	0.38 MICRONS GOLD PLATED	PK-67490-002	
67490-1220	GOLD FLASH	WITHOUT MYLAR	
67490-1221	0.76 MICRONS GOLD PLATED	TRAY PACKAGE	
67490-1225	0.38 MICRONS GOLD PLATED	PK-67490-001	
67490-1230	GOLD FLASH	WITH MYLAR	PURE TIN
67490-1231	0.76 MICRONS GOLD PLATED	TAPE REEL	
67490-1235	0.38 MICRONS GOLD PLATED	PK-67490-000	
67490-1240	GOLD FLASH	WITH MYLAR	
67490-1241	0.76 MICRONS GOLD PLATED	TUBE PACKAGE	
67490-1245	0.38 MICRONS GOLD PLATED	PK-67490-002	

NOTES:

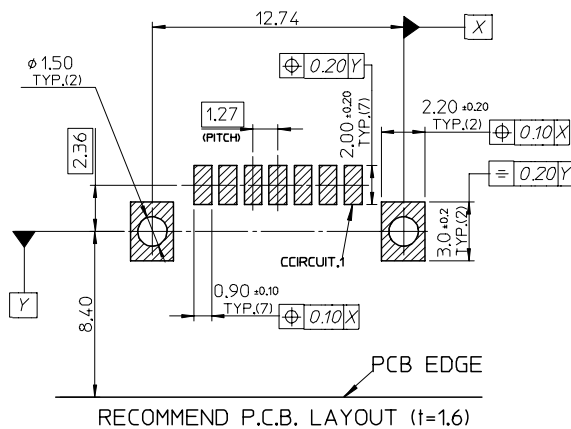
- MATERIAL:
HOUSING: HIGH TEMPERATURE THERMAL PLASTIC, GLASS FILLED, UL94V-0, COLOR : BLACK
TERMINAL/FORKLOCK: COPPER ALLOY
MYLAR: ADHENSIVE MYLAR 4.5MMX15.5MM
- TERMINAL PLATING:
CONTACT AREA: GOLD PLATED
SOLDERING TAIL: 1.27 MICRONS MINIMUM TIN-LEAD OR TIN PLATED
UNDER PLATE: NICKEL 1.27 MICRONS MINIMUM NICKEL PLATED
- FORKLOCK PLATING :
1.27 MICRONS MINIMUM TIN-LEAD OR TIN PLATED OVERALL 1.27 MICRONS MINIMUM NICKEL UNDER-PLATED
- PACKAGING SPECIFICATION REFER TO THAT IN TABLE
- PRODUCT SPECIFICATION REFER TO PS-67490-001
- MATING PART: 67538, 67489



SECTION B-B
SCALE 3:1



SECTION A-A
SCALE 3:1



RECOMMEND P.C.B. LAYOUT (t=1.6)

EC NO: SH2005-0091 DRAWN: GRMA 2004/10/13 CHKD: 2004/10/14 APPR: YTYAP 2004/10/14	QUALITY SYMBOLS ▽ = 0 ∇ = 0	GENERAL TOLERANCES (UNLESS SPECIFIED)		SCALE 4:1	DESIGN UNITS METRIC	THIRD ANGLE PROJECTION	REVISE ON CAD ONLY
				DIMENSION STYLE MM ONLY	TITLE	SATA SYSTEM PLUG R/A STANDARD TYPE	
REV DESCRIPTION	4 PLACES ± --- ± ---	3 PLACES ± --- ± ---	2 PLACES ± 0.15 ± ---	1 PLACE ± 0.25 ± ---	ANGULAR ± 3°	DRAFT WHERE APPLICABLE	MUST REMAIN WITHIN DIMENSIONS
	DRAWN BY RICHARD		DATE '01/08/08		CHECKED BY VINCENT		DATE '01/08/08
APPROVED BY ERICK		DATE '01/08/08		MATERIAL NO. SEE TABLE		DOCUMENT NO. SD-67490-002	
SHEET NO. 1 OF 1		THIS DRAWING CONTAINS INFORMATION THAT IS PROPRIETARY TO MOLEX INCORPORATED AND SHOULD NOT BE USED WITHOUT WRITTEN PERMISSION		A3			