

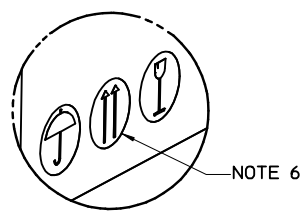
PRODUCT ID LABEL  
(1) PER REEL

SEE DETAIL 1

SHIPPER ID LABEL  
(1-2)/CARTON AS REQUIRED

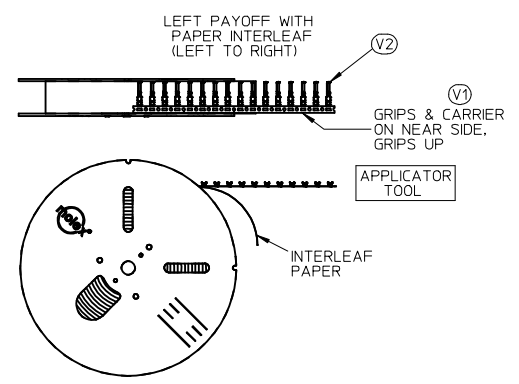
PALLET 0313016630  
635 mm X 635 mm  
(26" X 26")  
(SEE NOTE 6)

CUSTOMER COPY



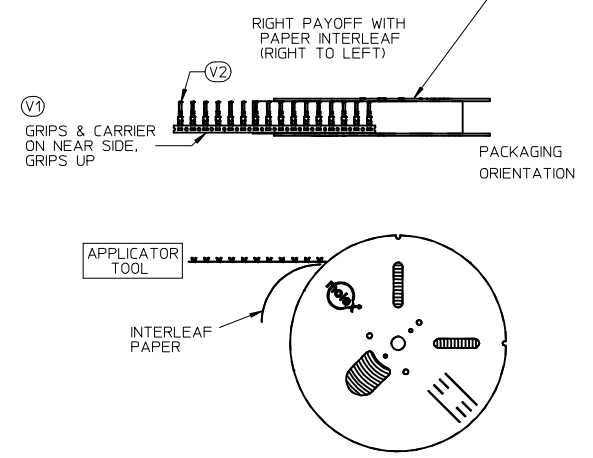
DETAIL 1  
SCALE 1:1.33

**PAYOFF  
DIRECTION D**



PLACE PRODUCT ID LABEL ON THIS SIDE TO INDICATE THE PREFERRED PACKAGING ORIENTATION

**PAYOFF  
DIRECTION B**



**NOTES:**

1. NUMBER OF TERMINALS PER REEL: SEE TABLE (SHEET 2)
2. STANDARD PACK QUANTITY (SPQ): SEE TABLE (SHEET 2)
3. NUMBER OF REELS PER CARTON: SEE TABLE (SHEET 2)
4. SPLICING: NO BREAKS, MAXIMUM 1 WELD PER REEL
5. TO MINIMIZE STRESS ON TERMINALS, REELS SHOULD ALWAYS BE SHIPPED ON PALLETS WITH THE REELS LAYING FLAT AS SHOWN.
6. PLACE CARTONS ON PALLET WITH ARROWS POINTING UP PER DETAIL 1
7. FOR INTERNAL COPY SEE: PK-31301-053

CARTON/PALLET CORRECTION

EC NO: UAU2015-0030	2014/07/07
CHKD: JDRWNPHELPS	2014/07/07
APPR: JNORTHRO	2014/07/22
REV	DESCRIPTION

QUALITY SYMBOLS	=0
	=0

GENERAL TOLERANCES (UNLESS SPECIFIED)	mm	INCH
4 PLACES	± ---	± ---
3 PLACES	± ---	± ---
2 PLACES	± ---	± ---
1 PLACE	± ---	± ---
ANGULAR ± 1 °		
DRAFT WHERE APPLICABLE MUST REMAIN WITHIN DIMENSIONS		

DIMENSION STYLE MM ONLY	
DRAWN BY	DATE
PPHELPS	2012/10/24
CHECKED BY	DATE
APPROVED BY	DATE
JNORTHRO	2012/11/26
MATERIAL NO.	SEE TABLE
SIZE	C

SCALE 1:10	DESIGN UNITS METRIC	THIRD ANGLE PROJECTION
TITLE CTX PACKAGING SPEC GEN. MRKT. PRODUCT CUSTOMER COPY		
molex MOLEX INCORPORATED		SHEET NO. 1 OF 2
DOCUMENT NO. SD-31301-053		
THIS DRAWING CONTAINS INFORMATION THAT IS PROPRIETARY TO MOLEX INCORPORATED AND SHOULD NOT BE USED WITHOUT WRITTEN PERMISSION		

PACKAGING DATA											
PRODUCT DESCRIPTION	CTX 64				CTX 150			CTX 280 SEALED			
PRODUCT P/N SERIES	0348030*** 0348031*** 0348032***		0348033*** 0348035***		034805****			034808****			
GRIP CODE	S	L	S	L	S	M	L	VS	S	M	L
PART WT (Kg/1000)	.1552	.1642	.126	.126	.3070	.3270	.3470	.6596	.6886	.7106	.7332
STAND PACK QTY (SPQ)	60000	60000	72000	60000	35000	30000	25000	10000	10000	10000	10000
QTY/REEL	10000	10000	12000	10000	7000	6000	5000	2000	2000	2000	2000
REELS/SHIPPER CARTON	6	6	6	6	5	5	5	5	5	5	5
CARTONS/PALLET (MAX)	5	5	5	5	5	5	5	5	5	5	5
FILLED CARTON WT (Kg)	14.83	15.37	TBD	TBD	15.64	14.70	13.57	11.5	11.8	12.0	12.2
FLANGE DIAMETER (MM)	610	610	610	610	610	610	610	610	610	610	610

CUSTOMER COPY

CARTON/PALLET CORRECTION

EC NO: UAU2015-0030  
 3 DRAWN: PHELPS 2014/07/07  
 CHKD:  
 APPR: JNORTHRO 2014/07/22

DESCRIPTION  
 REV

QUALITY SYMBOLS  
 ▽=0  
 ▽=0

GENERAL TOLERANCES (UNLESS SPECIFIED)

	mm	INCH
4 PLACES	± .---	± .---
3 PLACES	± .---	± .---
2 PLACES	± .---	± .---
1 PLACE	± .---	± .---

ANGULAR ± 1 °

DRAFT WHERE APPLICABLE MUST REMAIN WITHIN DIMENSIONS

DIMENSION STYLE  
**MM ONLY**

DRAWN BY DATE  
 PHELPS 2012/10/24

CHECKED BY DATE

APPROVED BY DATE  
 JNORTHRO 2012/11/26

MATERIAL NO.

SIZE C

SCALE 1:15

DESIGN UNITS METRIC

THIRD ANGLE PROJECTION

TITLE  
 CTX PACKAGING SPEC  
 GEN. MRKT. PRODUCT  
 CUSTOMER COPY

APPROVED BY DATE  
 MOLEX MOLEX INCORPORATED

DOCUMENT NO. SD-31301-053

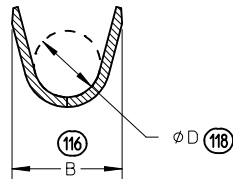
SHEET NO. 2 OF 2

THIS DRAWING CONTAINS INFORMATION THAT IS PROPRIETARY TO MOLEX INCORPORATED AND SHOULD NOT BE USED WITHOUT WRITTEN PERMISSION

**TABLE 1**

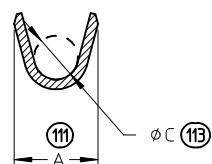
FAMILY	GENDER	SEALING	PLATING	PART NO	PAYOFF DIRECTION	GRIP SIZE	WIRE SIZES*	A ±0.20	B ±0.30	C ±0.10	D ±0.20	SPECIAL CHARACTERISTICS
CTX64	RECEPTACLE	MAT SEAL	Sn	34803-3211	LEFT (D)	S	22AWG	1.80	2.40	0.90	1.36	STANDARD
				34803-3213	RIGHT (B)		0.22-0.35mm <sup>2</sup>					PERFORMANCE TIN
				34803-3212	LEFT (D)	L	20AWG	2.15	2.50	1.20	1.72	STANDARD
				34803-3214	RIGHT (B)		0.50-0.85mm <sup>2</sup>					PERFORMANCE TIN

\* SEE AS-502306-002 FOR SPECIFIC WIRE TYPES



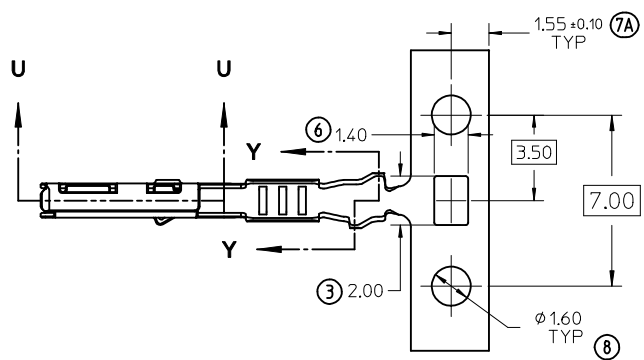
SECTION Y-Y  
SCALE 10:1

INSULATION GRIP

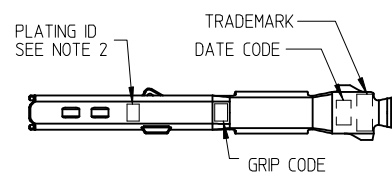
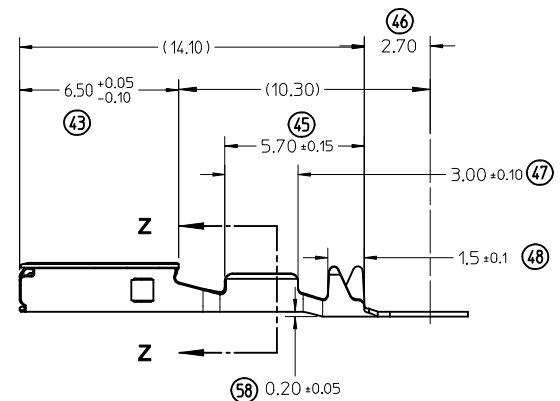
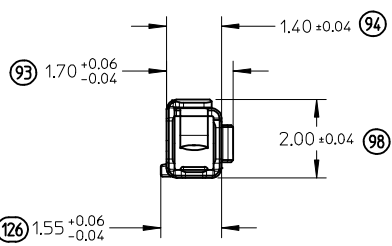


SECTION Z-Z  
SCALE 10:1

CONDUCTOR GRIP

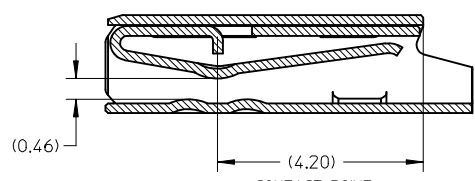


ISO VIEWS  
NOT TO SCALE



NOTES: (UNLESS OTHERWISE SPECIFIED)

1. MATERIAL: COPPER ALLOY
2. PLATING MARK: TIN (Sn) - NO MARK
3. PACKAGING PER SD-31301-053
4. CRIMPING PER AS-502306-002
5. PROBING AT ANY LOCATION ON THE TERMINAL BEAM IS NOT PERMITTED
6. PRODUCT SPECIFICATION PER PS-502306-001



SECTION U-U  
SCALE 10:1

CONTACT POINT

MINOR CORRECTIONS EC NO: UAU2014-1797 DRWN: B JENNINGS 01 2014/05/21 CHKD: ADHIR 2014/05/21 APPR: BMOSER 2014/06/02	DESCRIPTION REV A1	QUALITY SYMBOLS	GENERAL TOLERANCES (UNLESS SPECIFIED)	DIMENSION STYLE	SCALE	DESIGN UNITS	THIRD ANGLE PROJECTION	
		$\nabla F = 0$ $\nabla E = 0$ $\nabla F = 0$	mm INCH 4 PLACES ± --- ± --- 3 PLACES ± --- ± --- 2 PLACES ± 0.08 ± --- 1 PLACE ± 0.08 ± --- 0 PLACE ± --- ± ---	MM ONLY	5:1	METRIC	DRAWN BY: AKARANA DATE: 2013/03/05 CHECKED BY: ADHIR DATE: 2013/06/05 APPROVED BY: BMOSER DATE: 2013/06/27	TITLE CTX64 RECEPTACLE TERMINAL
		ANGULAR ± 1 °	DRAFT WHERE APPLICABLE MUST REMAIN WITHIN DIMENSIONS	SEE TABLE	MATERIAL NO. SD-34803-002	DOCUMENT NO. SD-34803-002	SHEET NO. 1 OF 1	
		THIS DRAWING CONTAINS INFORMATION THAT IS PROPRIETARY TO MOLEX INCORPORATED AND SHOULD NOT BE USED WITHOUT WRITTEN PERMISSION						