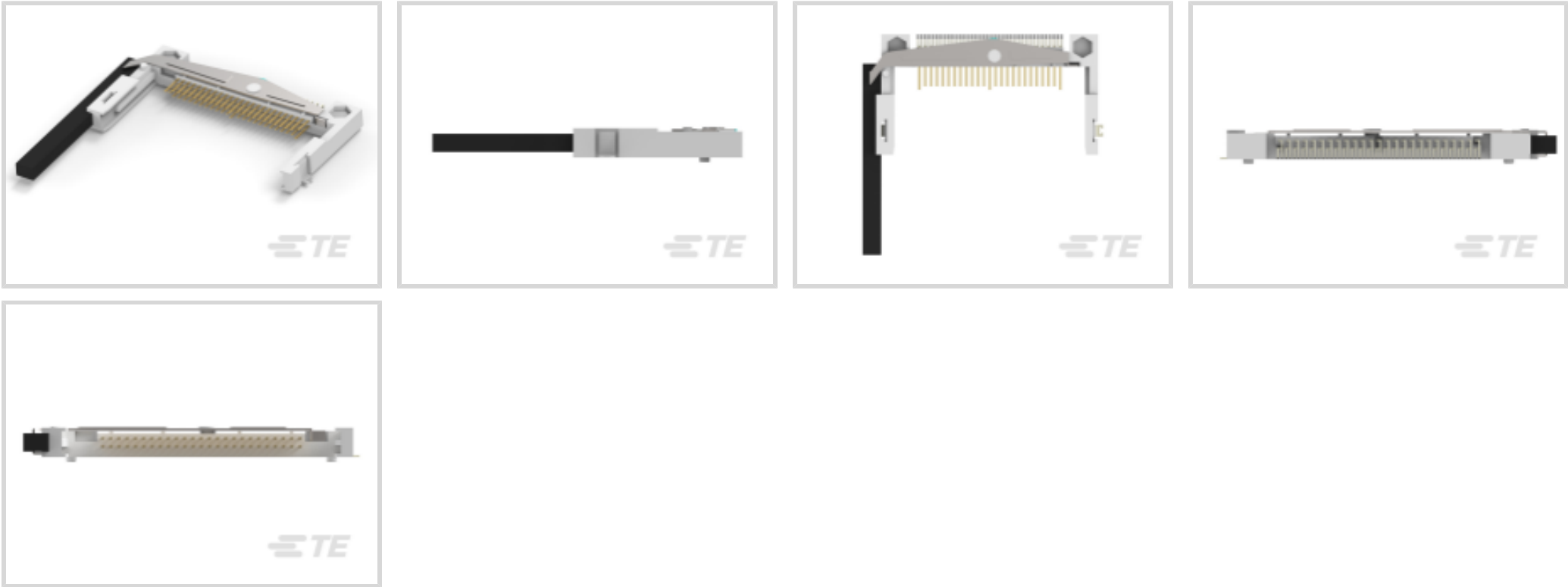




Connectors > PCB Connectors > Memory Card Connectors > CompactFlash Connectors



Termination Method to PCB: **Surface Mount**

PCB Mount Orientation: **Right Angle**

Features

Product Type Features

Connector & Contact Terminates To	Printed Circuit Board
Connector System	Cable-to-Board

Configuration Features

Number of Positions	50
Number of Rows	2
PCB Mount Orientation	Right Angle

Contact Features

Contact Current Rating (Max)	.5 A
------------------------------	------

Termination Features

Termination Method to PCB	Surface Mount
---------------------------	---------------

Mechanical Attachment

Connector Mounting Type	Board Mount
-------------------------	-------------

Housing Features

Centerline (Pitch)	1.27 mm[.05 in]
--------------------	-----------------

Operation/Application

Circuit Application	Signal
---------------------	--------



Product Compliance

For compliance documentation, visit the product page on TE.com>

EU RoHS Directive 2011/65/EU	Compliant
EU ELV Directive 2000/53/EC	Compliant
China RoHS 2 Directive MIIT Order No 32, 2016	No Restricted Materials Above Threshold
EU REACH Regulation (EC) No. 1907/2006	Current ECHA Candidate List: JAN 2025 (247) Candidate List Declared Against: JUNE 2024 (241) Does not contain REACH SVHC
Halogen Content	Low Halogen - Br, Cl, F, I < 900 ppm per homogenous material. Also BFR/CFR/PVC Free
Solder Process Capability	Reflow solder capable to 260°C

Product Compliance Disclaimer

This information is provided based on reasonable inquiry of our suppliers and represents our current actual knowledge based on the information they provided. This information is subject to change. The part numbers that TE has identified as EU RoHS compliant have a maximum concentration of 0.1% by weight in homogenous materials for lead, hexavalent chromium, mercury, PBB, PBDE, DBP, BBP, DEHP, DIBP, and 0.01% for cadmium, or qualify for an exemption to these limits as defined in the Annexes of Directive 2011/65/EU (RoHS2). Finished electrical and electronic equipment products will be CE marked as required by Directive 2011/65/EU. Components may not be CE marked. Additionally, the part numbers that TE has identified as EU ELV compliant have a maximum concentration of 0.1% by weight in homogenous materials for lead, hexavalent chromium, and mercury, and 0.01% for cadmium, or qualify for an exemption to these limits as defined in the Annexes of Directive 2000/53/EC (ELV). Regarding the REACH Regulation, the information TE provides on SVHC in articles for this part number is based on the latest European Chemicals Agency (ECHA) 'Guidance on requirements for substances in articles' posted at this URL: <https://echa.europa.eu/guidance-documents/guidance-on-reach>

Also in the Series | CGS SM



Expanded Beam Fiber Optics(6)



LC Connectors(1)



RJ14 Connectors(1)



RJ22 Connectors(1)



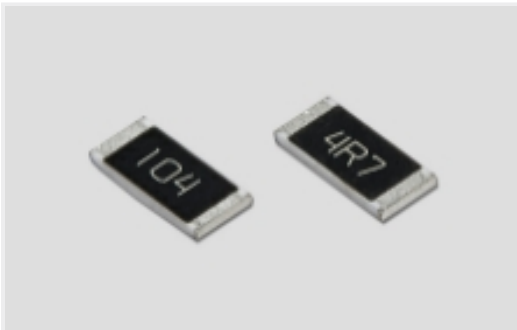
RJ25 Connectors(1)



RJ45 Connectors(3)



SC Connectors(2)



Surface Mount Resistors(549)

Customers Also Bought



TE Part #6-1734324-3
RJ45 w/ Y/GO LED PAL GND TRY 30u"



TE Part #3-1969541-6
RETAINER, TPA, DUAL ROW, EP2.5



TE Part #3-1969541-4
RETAINER, TPA, DUAL ROW, EP2.5



TE Part #5-2176460-1
SMF 7W 130K 5% Taped



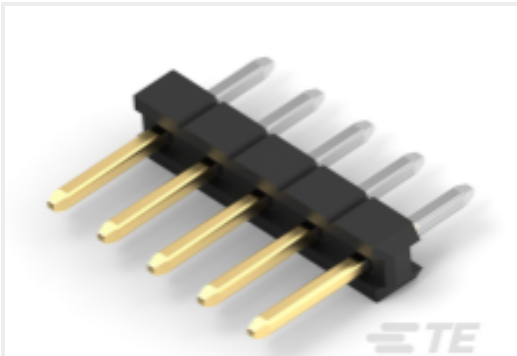
TE Part #T2031082201-007
HDD-108-F



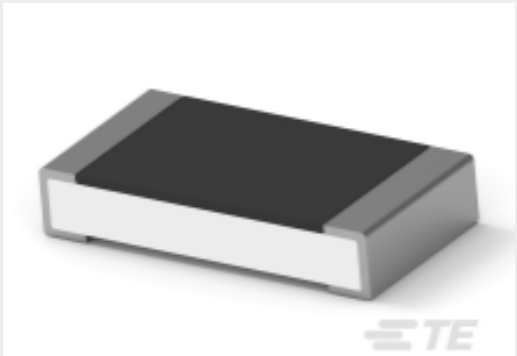
TE Part #1725616-1
SEATING TL,2X1 KIT,L.P.



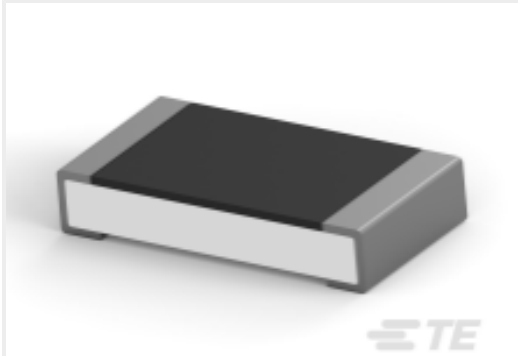
TE Part #3-1969541-8
RETAINER, TPA, DUAL ROW, EP2.5



TE Part #2355172-5
5P,2MM,BRK HDR,SRVT,2.8,0.1AU,BOX



TE Part #1-2176391-6
RQ 1206 17K8 0.1% 10PPM 5K RL



TE Part #5-2176388-5
RQ 1206 36R5 0.1% 10PPM 5K RL

Documents

CAD Files

3D PDF

3D

Customer View Model

ENG_CVM_CVM_1734909-1_D_c-1734909-1-d.2d_dxf.zip

English

Customer View Model

ENG_CVM_CVM_1734909-1_D_c-1734909-1-d.3d_igs.zip



English

Customer View Model

[ENG_CVM_CVM_1734909-1_D_c-1734909-1-d.3d_stp.zip](#)

English

By downloading the CAD file I accept and agree to the [Terms and Conditions](#) of use.

Product Specifications

COMPACT FLASH CARD, 1.27mm(.050") PITCH

English

Product Specification

English

Product Specification

English