

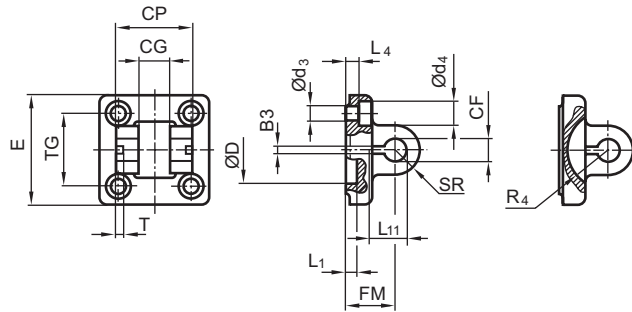
Cylinder accessories → Cylinder mountings; series CM1

**Clevis mounting AB6**

► Cylinder mounting in accordance with ISO 15552



00105816



00105819

Scope of delivery: clevis mounting incl. pivot pins and mounting screws

Part No.	Piston Ø	B3 ±0,2	Ø CF F7	CG D10	CP d12	Ø d3	Ø d4	Ø D	E	FM ±0,2	L1 1)	L4 ±0,5
<b>1827001593</b>	32	3.3	10	14	34	6.6	11	30	49	22	4.5	5.5
<b>1827001594</b>	40	4.3	12	16	40	6.6	11	35	55	25	4.5	5.5
<b>1827001595</b>	50	4.3	16	21	45	9	15	40	67	27	4.5	6.5
<b>1827002024</b>	63	4.3	16	21	51	9	15	45	77	32	4.5	6.5
<b>1827001597</b>	80	4.3	20	25	65	11	18	45	97	36	4.5	10
<b>1827001598</b>	100	4.3	20	25	75	11	18	55	117	41	4.5	10
<b>1827001599</b>	125	6.3	30	37	97	14	20	60	140	50	7	10
<b>1827001600</b>	160	6.3	35	43	122	18	26	65	180	55	10	10
<b>1827001601</b>	200	6.3	35	43	122	18	26	75	220	60	10	11
<b>1827001602</b>	250	8.3	40	49	125	22	33	90	280	70	12	11

Part No.	L11 -0,5	R4	SR	T ±0,2	TG	Material	Surface				
<b>1827001593</b>	16.5	17	11	3	32,5 ±0,2	Aluminum	-				
<b>1827001594</b>	18	20	12	4	38 ±0,2	Aluminum	-				
<b>1827001595</b>	23	22	15	4	46,5 ±0,2	Aluminum	-				
<b>1827002024</b>	23	25	15	4	56,5 ±0,2	Aluminum	-				
<b>1827001597</b>	27	30	20	4	72 ±0,2	Aluminum	-				
<b>1827001598</b>	27	32	20	4	89 ±0,2	Aluminum	-				
<b>1827001599</b>	40	42	26	6	110 ±0,3	Aluminum	-				
<b>1827001600</b>	45	46	32.5	6	140 ±0,3	Nodular graphite iron	galvanized				
<b>1827001601</b>	45	49	32.5	6	175 ±0,3	Nodular graphite iron	galvanized				
<b>1827001602</b>	53	55	40	8	220 ±0,3	Nodular graphite iron	galvanized				

1) Min.