

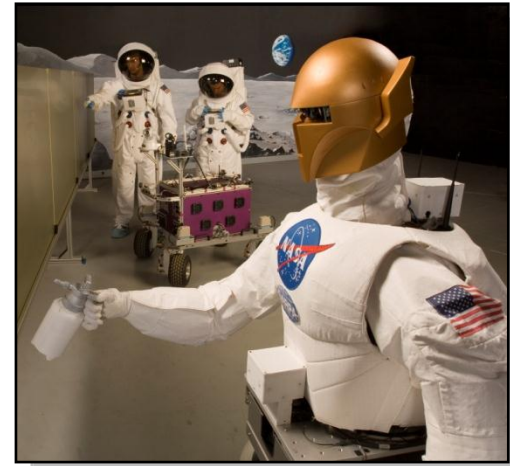
Datamate

Performance without Compromise

An overview of the Datamate range, its applications, features and benefits

Datamate

- 2mm pitch Connector System
- Industry recognised High Reliability
- Approved to:
 - BS9525-F0033 (1 & 2-row)
 - CECC-75101-008 (1, 2 & 3-row)
- Designed for military, aerospace and “high-end” applications
- Proven in Many Years of Successful Service
- Successfully and internationally utilised in COTS programs



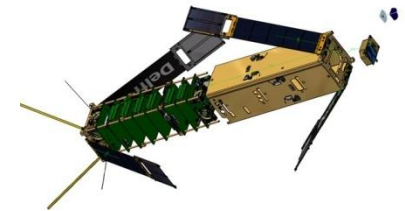
Markets and Applications

- Aerospace & Aeronautics
- Military
- Data & Telecommunications
- Medical
- Handheld Equipment
- Industrial Equipment
- Robotics
- Oil & Gas



Version 3 - 22-01-2013

- NASA Robonaut
- Boeing 737, 747 & 757
- Eurofighter Typhoon
- Watchkeeper UAV
- ScanEagle UAV
- Hydroid AUV
- Delphi C³ Satellite
- "IceCube" Neutrino Telescope
- Bowman Military Radio
- Airbus A380
- Meteor Air-to-Air Missile



Design Features

- Compact design – 2.00mm pitch
- Beryllium Copper 4 Finger contact
 - Tolerates extremes of temperature
 - Withstands high vibration and shock
- Extensive product range
- Optional Latches or Jackscrews for strain relief
- Polarised Mouldings
- Shrouded design
- Professional connector system for Commercial or COTS prices
- Mixed technology options for Power and Coax applications



Specification Highlights

- Current Rating = 3.3A individual, 3.0A all contacts
 - High current for reduced footprint
- Durability = 500 operations, tested up to 5,000
 - Long life whether fit & forget or high usage
- Operational Temperature = -55°C to +125°C
 - Suitable for a wide variety of harsh environments
- Vibration sensitivity = 10Hz to 2,000Hz; 10G for 6 hours
- Bump severity = 40G for 4,000 bumps
- Shock severity = 100G for 6 milliseconds
- Acceleration severity = 50G
 - Shock resistant
 - Maintains performance integrity in extreme g-force situations

[Click here
for full
specification](#)



Product Families – Datamate L-Tek

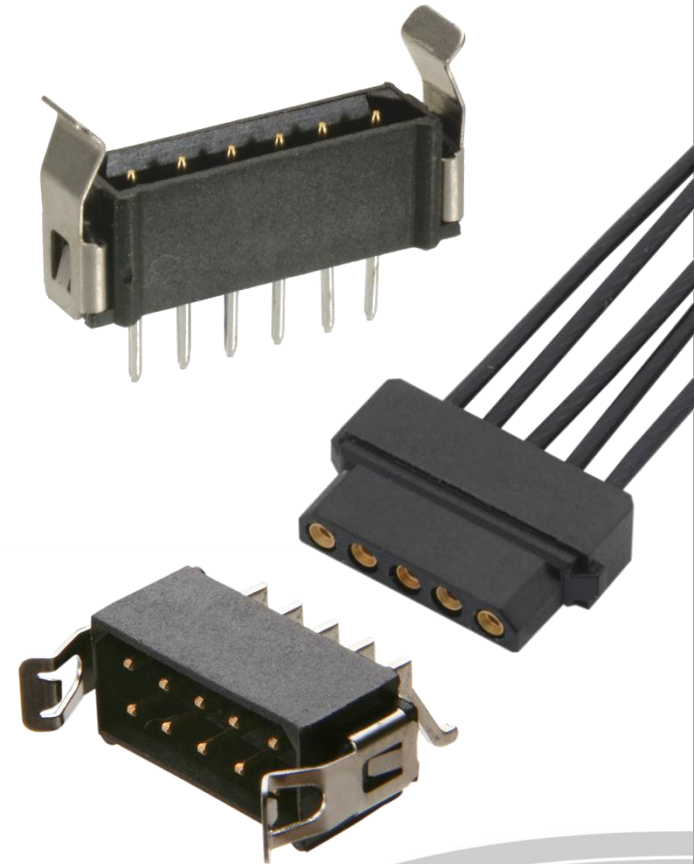
L-Tek is short for **Latching** Technology – low frequency connectors with a range of strain relief options:

- Locking Latch
- Friction Latch
- No Latch

[Click here for training module on Latches](#)

Available in Single or Double row, with the following configurations:

- Female – Vertical, PC Tail or SMT, Cable
- Male – Vertical or Horizontal, PC Tail or SMT, Cable
- Cable hoods for Female double row



Product Families – Datamate **J-Tek**

J-Tek is short for **Jackscrew** Technology – low frequency connectors with a wide range of strain relief and board fixing options:

- Increased security of connection
- Board Mount retention
- Male to Female fixing, or Guide Pins

Available in Double row, with the following configurations:

- Female – Vertical, PC Tail or SMT, Cable
- Male – Vertical or Horizontal, PC Tail or SMT, Cable
- Cable hoods for Female/Male double row

[Click here
for training module
on Jackscrews](#)



Product Families – Datamate 3-Row

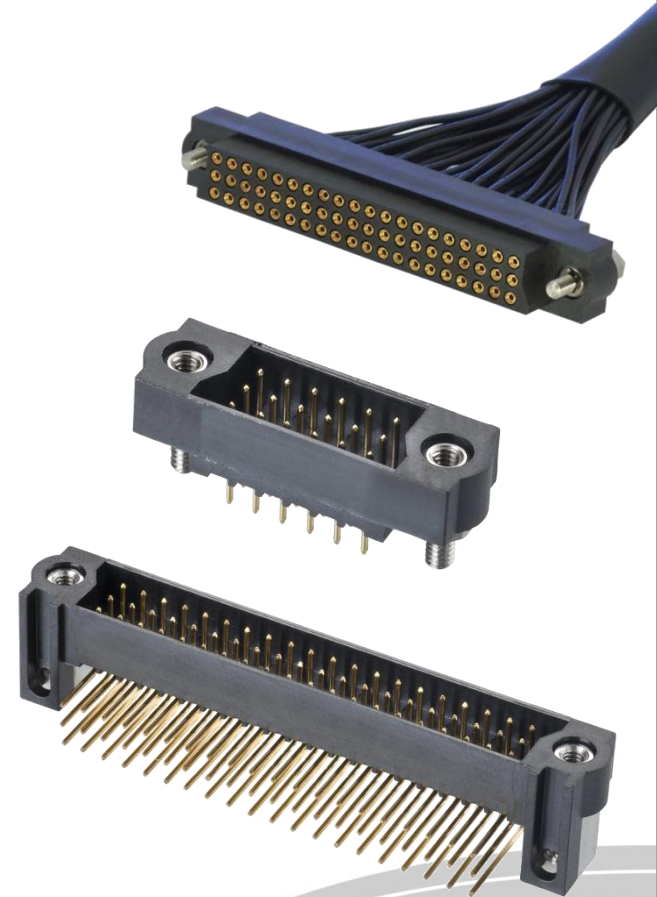
OFF THE SHELF

J-Tek is also available in a Triple Row connector configuration, with the most popular sizes available Off-The-Shelf:

- Reduced insertion force female contact
- Up to 96 contacts available
- Male to Female fixing, with board mount for additional security

Available in with the following configurations:

- Female – Vertical PC Tail or Cable
- Male – Vertical or Horizontal, PC Tail



[Click here
for Brochure](#)

Product Families – Datamate **Mix-Tek**

OFF THE SHELF

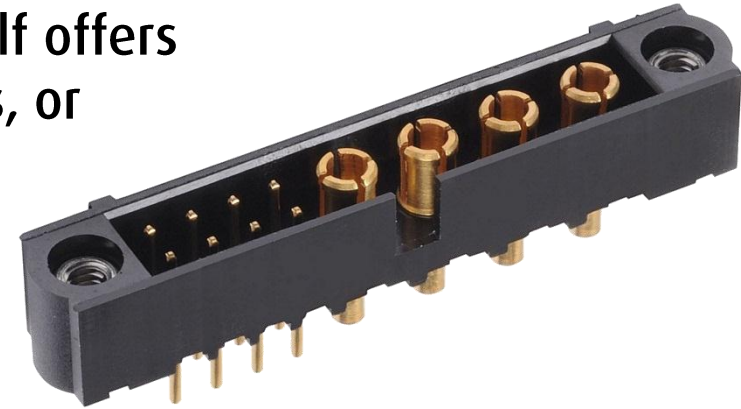
Mix-Tek: **Mixed** Technology – Off-The-Shelf offers Signal and Power combination connectors, or Power-only, with jackscrew options from the J-Tek range:

- 3A low frequency signal contacts
- High Power – up to 20A
- Stocked in depth in popular configurations
- Male to Female fixing, with board mount for additional security

Available in Double row:

- Female – Cable
- Male – Vertical or Horizontal PC Tail

[Click here for Brochure](#)



Product Families – Datamate **Mix-Tek**

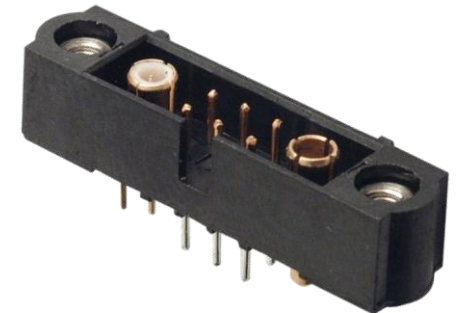
Mix-Tek: **Mixed** Technology – If Off-The-Shelf does not cover your requirements, Harwin can offer an increased range to order:

- 3A LF signal contacts and High Power to 20A
- Coax – 6Ghz, 50 Ohm
- 3 connection systems in one, with the jackscrew options from the J-Tek range
- Millions of combinations

Available in Double or Triple row:

- Female – Vertical, PC Tail/SMT, Cable
- Male – Vertical/Horizontal, PC Tail/SMT, Cable

Contact the
Technical team
for assistance



Product Families – Datamate **Trio-Tek**

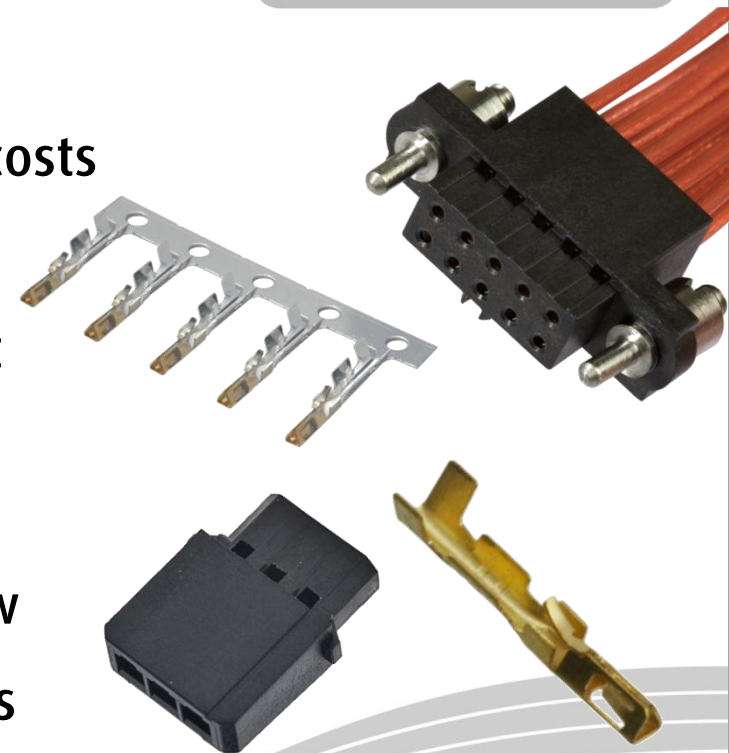
Trio-Tek is an open crimp design, performing to the same high reliability as standard barrel crimps, but with the added convenience of automated crimp processes:

- Save on assembly time and process costs
- Minimal contact insertion force
- Hand crimp tool available for product development/prototyping

Available in the following configurations:

- Female L-Tek – Single and Double row
- Female J-Tek – Double row, numerous jackscrew options

[Click here for more information](#)



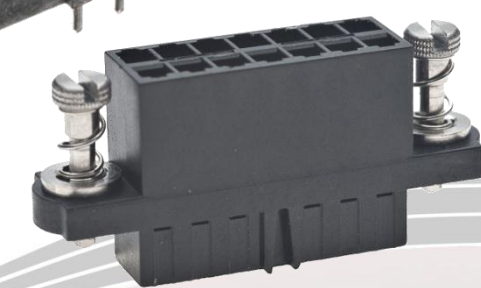
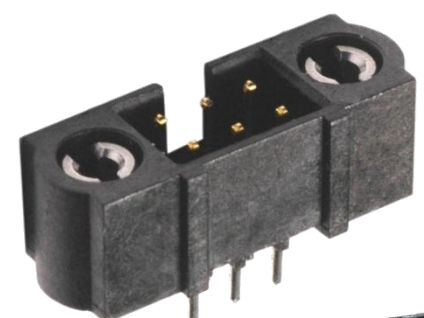
Product Families – Datamate 101 Lok

101Lok is a simplified mating retention designed by Harwin: 101-degree turn of each fixing will lock or release the connectors:

- Faster mating / unmating time
- Requires no special tooling

Available as part of the Double row J-Tek, with the following configurations:

- Female – Vertical, PC Tail or SMT, Cable
- Male – Vertical or Horizontal, PC Tail or SMT, Cable (with or without board mount)



[Click here for training module on 101Lok](#)

Product Families – for safety-critical

Datamate BS

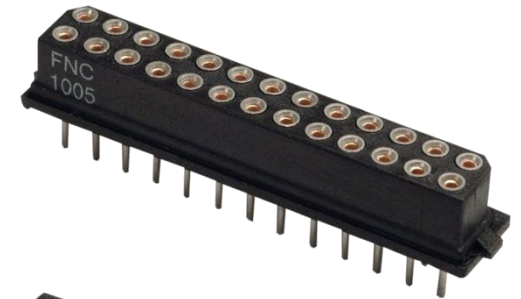
Datamate L-Tek, manufactured to British Standard 9525-F0033. 100% inspected, batch and yearly tested, ideal for safety-critical applications.

[Click here for further information on Datamate BS](#)

Datamate -Plus

Any Datamate – the same inspection and in-process testing as Datamate BS can be offered on any product within the Datamate family.

[Contact Harwin](#) for more information.



Any Questions?

The Harwin Team is happy to help, please contact us!

- Live Help (on the [Harwin website](#))
- E-mail – technical@harwin.com
- Telephone – [click here](#) for the contact details for your region

