

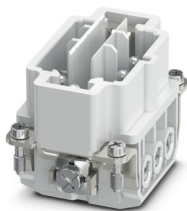
HC-TSC-B06-I-UT-M-CE - Contact insert



1541916

<https://www.phoenixcontact.com/gb/products/1541916>

Please be informed that the data shown in this PDF document is generated from our online catalog. Please find the complete data in the user documentation. Our general terms of use for downloads are valid.



Contact insert, number of positions: 6+PE, size: B6, Pin, Screw connection, 200 V, 16 A, 1.5 mm² ... 6 mm²

Your advantages

- Halogen-free
- Shock and vibration-resistant in accordance with DIN EN 61373

Commercial data

Item number	1541916
Packing unit	1 pc
Minimum order quantity	1 pc
Sales key	AF7ABC
Product key	AF7ABC
GTIN	4067923014732
Weight per piece (including packing)	68.5 g
Weight per piece (excluding packing)	67.2 g
Customs tariff number	85366990
Country of origin	CN

Technical data

Notes

General	Please observe the circuit diagram
General	Use at least 1.5 mm ² cables with a maximum conductor loop of 2 m. No open conductor loops permitted!

Product properties

Product type	Contact insert with a fixed no. of positions
Type	B6
Number of positions	6
Connection profile	6+PE

Insulation characteristics

Overvoltage category	III
Degree of pollution	3

Dimensions

Mechanical characteristics

Contact diameter	2.5 mm
------------------	--------

Connection data

Connection technology

Connection technology	Screw connection
-----------------------	------------------

Conductor connection

Conductor cross section	1.5 mm ² ... 6 mm ²
Connection cross section AWG	16 ... 10
Tightening torque	1.2 Nm
Stripping length of the individual wire	10 mm

Electrical properties

Rated voltage (III/3)	200 V (when plugged in)
	20 V (Unplugged and during plugging)
Rated surge voltage	2.5 kV
Rated current	16 A (When plugged in)
	5 A (Unplugged and during plugging)

Mechanical properties

Mechanical data

Insertion/withdrawal cycles	>= 500
-----------------------------	--------

Material specifications

Flammability rating according to UL 94	V0
--	----

HC-TSC-B06-I-UT-M-CE - Contact insert



1541916

<https://www.phoenixcontact.com/gb/products/1541916>

Contact material	Copper alloy
Contact surface material	Ag
Contact carrier material	PC

Environmental and real-life conditions

Ambient conditions

Ambient temperature (operation)	-40 °C ... 125 °C (including heating up of contacts)
---------------------------------	--

HC-TSC-B06-I-UT-M-CE - Contact insert

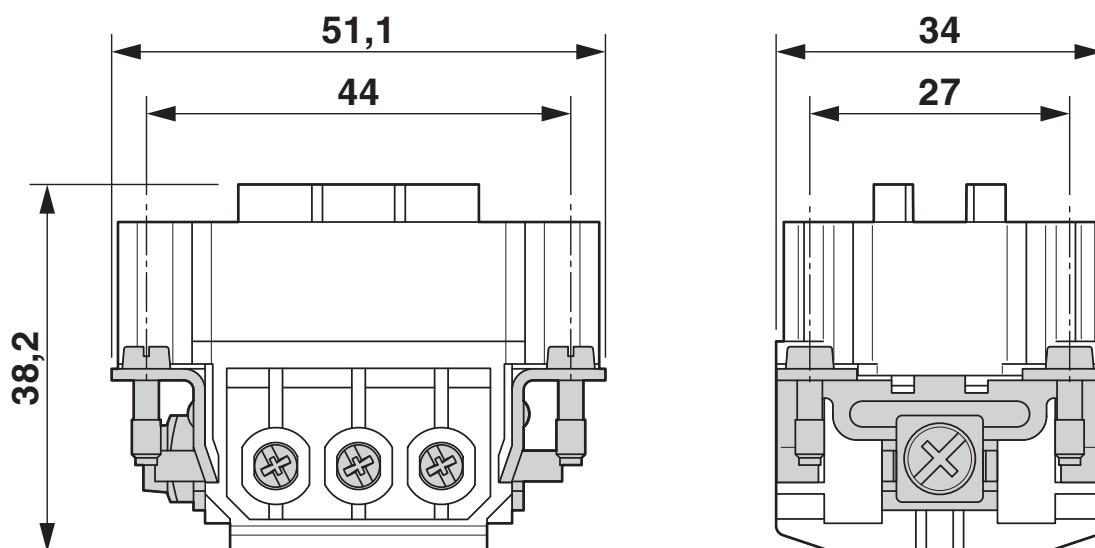
1541916

<https://www.phoenixcontact.com/gb/products/1541916>



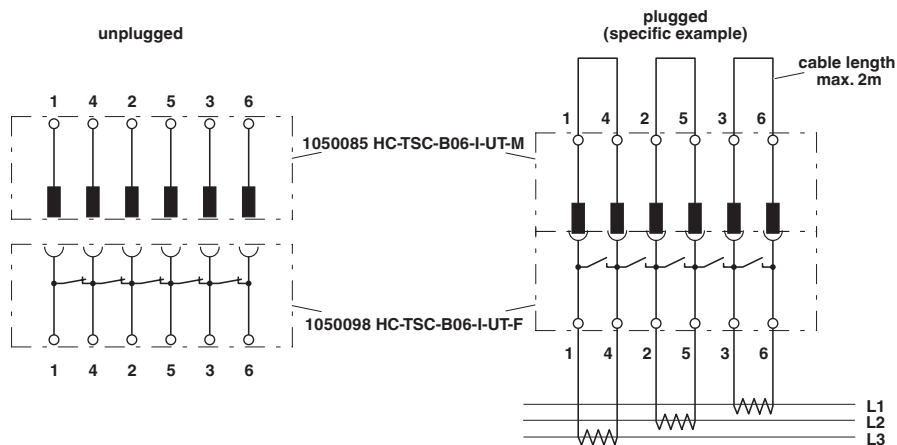
Drawings

Dimensional drawing



Male insert

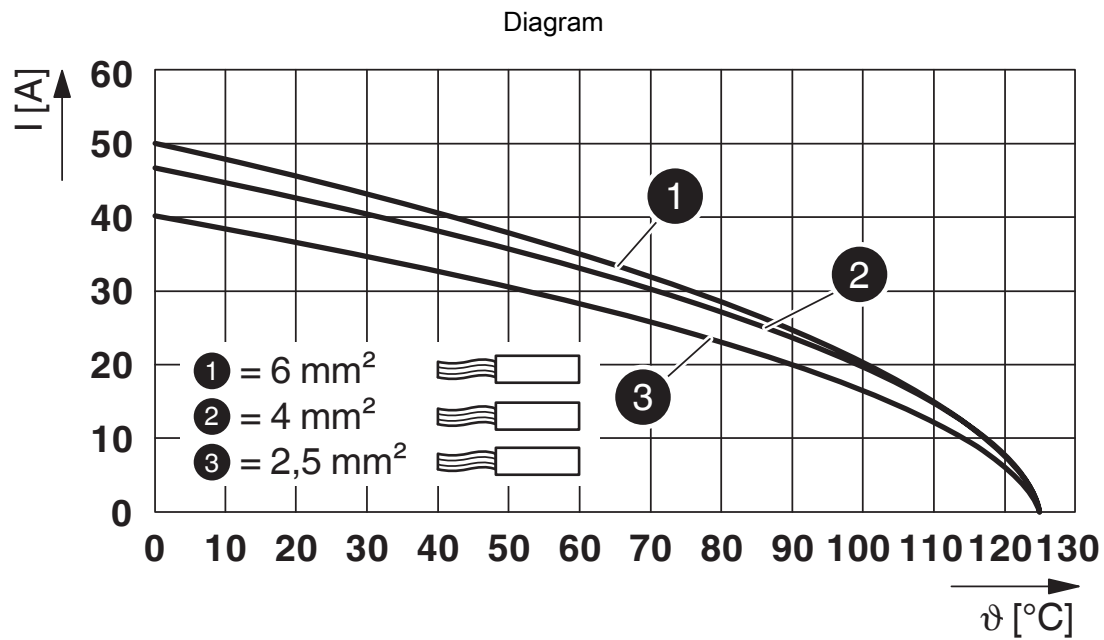
Schematic diagram



Circuit diagram

1541916

<https://www.phoenixcontact.com/gb/products/1541916>



Derating diagram (mated)

HC-TSC-B06-I-UT-M-CE - Contact insert



1541916

<https://www.phoenixcontact.com/gb/products/1541916>

Classifications

ECLASS

ECLASS-13.0	27440205
-------------	----------

ETIM

ETIM 9.0	EC000438
----------	----------

1541916

<https://www.phoenixcontact.com/gb/products/1541916>

Environmental product compliance

EU RoHS

Fulfills EU RoHS substance requirements	Yes
Exemption	6(c)

China RoHS

Environment friendly use period (EFUP)	EFUP-50
	An article-related China RoHS declaration table can be found in the download area for the respective article under "Manufacturer declaration". For all articles with EFUP-E, no China RoHS declaration table issued and required.

EU REACH SVHC

REACH candidate substance (CAS No.)	Lead(CAS: 7439-92-1)
SCIP	cf223e22-b59a-43ab-acd6-ff660d6042bb

Phoenix Contact 2025 © - all rights reserved

<https://www.phoenixcontact.com>

PHOENIX CONTACT Ltd
Halesfield 13, Telford
Shropshire, TF7 4PG
01952 681700
info@phoenixcontact.co.uk