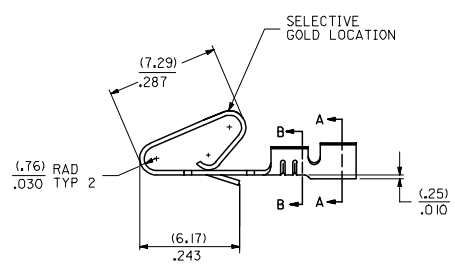
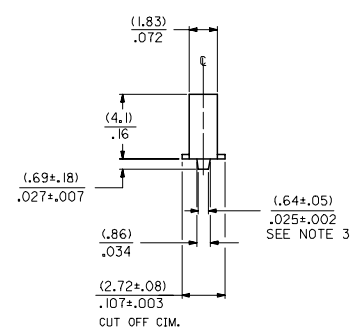
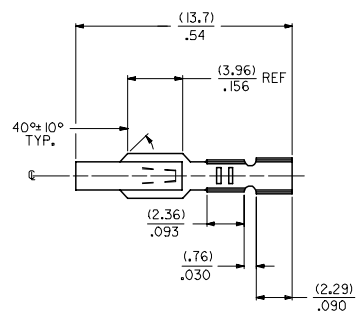
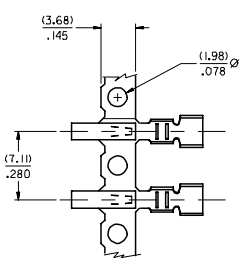
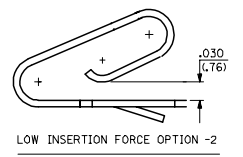
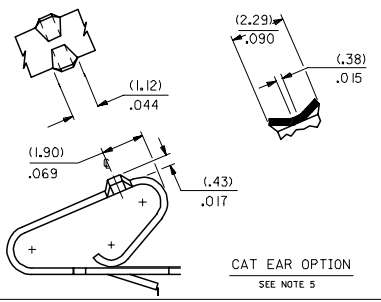


NOTES:

1. CRIMP ACCEPTS 22 TO 26 GA. WIRE WITH (.165)/.065 MAX INSULATION DIA.
2. DIMENSIONS GIVEN ACROSS CENTERLINES ARE SYMMETRICAL ABOUT THOSE CENTERLINES WITHIN HALF THE TOTAL TOLERANCE.
3. OPTIONAL DESIGN (.86+.05)/.034+.002
4. TERMINAL CONFORMS TO PRODUCT SPEC. 08-50.
5. CAT EAR OPTION TO BE USED WITH 41695 HOUSING ONLY.



2578 - * - * * *

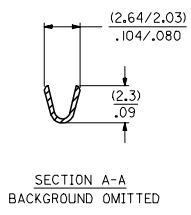
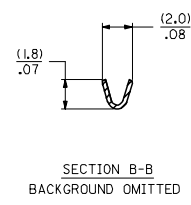
MATERIAL CODE
 (.28)/.0106 THK
 BLANK=BRASS
 B=PHOS BRONZE

WINDING SPEC.
 A=PER ES-339-A
 BLANK=PER ES-339-B
 L=LOOSE

PLATING CODE
 (PER SDES-88)
 *(P909) OVERALL HOT TIN DIP: 2.54 MICROMETERS MIN
 (550) SELECT GOLD: 0.38 MICROMETERS MIN.
 OVERALL GOLD FLASH: 0.05 MICROMETERS MIN.
 OVERALL NICKEL UNDERPLATE: 0.76 MICROMETERS MIN.
 (555) SELECT GOLD: 0.38 MICROMETERS MIN.
 OVERALL NICKEL UNDERPLATE: 0.76 MICROMETERS MIN.

OPTIONS
 BLANK=AS SHOWN
 1=WITH CAT EARS
 2=LOW INSERTION FORCE

*THE PRIMARY SHIPPING CARTON WILL BE LABELED *COMPLIANT TO ROHS DIRECTIVE 2002/95/EC AND ELV ANNEX II OF DIRECTIVE 2000/53/EC.* CARTONS WITHOUT THIS LABEL MAY CONTAIN PRODUCT WITH TIN-LEAD PLATING.



| | | | | | | |
|--|---|--|---|-------------------------------|-------------------------|---------------------|
| ENTER DESCRIPTION EC NO: UCP2005-0928 DRAWN BY: DRW:ADRIANO 2004/11/16 CHKD-SAMEC 2004/11/02 APPR:MMRIGALLIS 2004/11/02 W | QUALITY SYMBOLS ▽=0 ▽=0 | GENERAL TOLERANCES (UNLESS SPECIFIED) mm INCH 4 PLACES ± --- ± --- 3 PLACES ± --- ± .010 2 PLACES ± 0.25 ± .014 1 PLACE ± 0.36 ± --- ANGULAR ±1/2° | DIMENSION STYLE IN/MM | SCALE DESIGN UNITS INCH | THIRD ANGLE PROJECTION | |
| | DRAFT WHERE APPLICABLE MUST REMAIN WITHIN DIMENSIONS | SEE CHART SIZE D | THIS DRAWING CONTAINS INFORMATION THAT IS PROPRIETARY TO MOLEX INCORPORATED AND SHOULD NOT BE USED WITHOUT WRITTEN PERMISSION | MATERIAL NO. SD-2578 | DOCUMENT NO. SD-2578 | SHEET NO. 1 OF 2 |
| | TITLE CRIMP TERMINAL (.96)/.156 CENTERS 22 TO 26 GA WIRE | | MOLEX INCORPORATED | | | |
| | | | | | | |

| 2578-(***)* | | 2578-B-(***)* | | 2578-B-2(***)* | | | | | | | |
|--------------|---------------|---------------|----------------|----------------|-----------------|----------|----------|----------|----------|----------|----------|
| PART NO. | ENG. NO. | PART NO. | ENG. NO. | PART NO. | ENG. NO. | PART NO. | ENG. NO. | PART NO. | ENG. NO. | PART NO. | ENG. NO. |
| 08-50-0107 | 2578-(P909) | 08-56-0121 | 2578-B-(501) | | 2578-B-2(P909) | | | | | | |
| 08-50-0108 | 2578-(P909)L | 08-56-0122 | 2578-B-(501)L | | 2578-B-2(P909)L | | | | | | |
| 08-50-0111 | 2578-(109) | 08-50-0133 * | 2578-B-(P909) | | 2578-B-2(555) | | | | | | |
| 08-50-0112 | 2578-(109)L | 08-50-0134 * | 2578-B-(P909)L | | 2578-B-2(555)L | | | | | | |
| 08-56-0107 | 2578-(550) | 08-65-0116 * | 2578-B-(555) | | 2578-B-2(550) | | | | | | |
| 08-56-0108 | 2578-(550)L | 08-65-0117 * | 2578-B-(555)L | | 2578-B-2(550)L | | | | | | |
| 08-55-0105 | 2578-(555) | 08-65-0108 | 2578-B-(591) | | | | | | | | |
| 08-56-0106 | 2578-(555)L | 08-65-0107 | 2578-B-(591)L | | | | | | | | |
| 08-59-0101 | 2578-(122) | 08-60-0003 | 2578-B-(122) | | | | | | | | |
| | 2578-(122)L | 08-60-0004 | 2578-B-(122)L | | | | | | | | |
| 1 08-56-0162 | 2578-(505) | 08-65-0110 | 2578-B-(558) | | | | | | | | |
| 1 08-56-0163 | 2578-(505)L | 08-65-0111 | 2578-B-(558)L | | | | | | | | |
| 08-50-0504 | 2578-(128) | 08-58-0125 * | 2578-B-(550) | | | | | | | | |
| | 2578-(128)L | 08-58-0126 * | 2578-B-(550)L | | | | | | | | |
| 08-56-0161 | 2578-(503) | | | | | | | | | | |
| | 2578-(503)L | | | | | | | | | | |
| 1 08-50-0061 | 2578-(224) | | | | | | | | | | |
| 1 08-50-0062 | 2578-(224)L | | | | | | | | | | |
| 1 08-50-0065 | 2578-(P224) | | | | | | | | | | |
| 1 08-50-0066 | 2578-(P224)L | | | | | | | | | | |
| 08-55-0137 | 2578-(558)A | | | | | | | | | | |
| | 2578-(558)L | | | | | | | | | | |
| 08-50-0018 | 2578-(102) | | | | | | | | | | |
| 08-50-0019 | 2578-(102)L | | | | | | | | | | |
| 08-55-0121 | 2578-(561) | | | | | | | | | | |
| 08-55-0132 | 2578-(561)L | | | | | | | | | | |
| 08-55-0123 | 2578-(558) | | | | | | | | | | |
| | 2578-(558)L | | | | | | | | | | |
| 08-65-0109 | 2578-(555)A | | | | | | | | | | |
| 08-52-0116 | 2578-(P909) | | | | | | | | | | |
| 08-52-0117 | 2578-(P9109)L | | | | | | | | | | |

| | | | | | | | | | |
|--|---|---|------------|---------------------------------|------------------|--|----------------------|--|----------------|
| CHANGE TO ME10 EC NO: UCP2005-0928 DRAWN: RAJATINDOL 2004/11/16 CHK'D: SAMEC 2004/11/02 APPR: MARGULLIS 2004/11/02 W | QUALITY SYMBOLS ▽=0 ▽=0 DESCRIPTION | GENERAL TOLERANCES (UNLESS SPECIFIED) | | DIMENSION STYLE IN/MM | | SCALE | DESIGN UNITS INCH | <input checked="" type="checkbox"/> THIRD ANGLE PROJECTION | |
| | | 4 PLACES ± --- ± --- 3 PLACES ± --- ± --- 2 PLACES ± --- ± --- 1 PLACE ± --- ± --- | mm INCH | DRAWN BY PEREZ/AR | DATE 01/29/87 | TITLE CRIMP TERMINAL (3,96)/.156 CENTERS 22 TO 26 GA WIRE | MATERIAL NO. | DOCUMENT NO. SD-2578 | SHEET NO. 2 |
| | | ANGULAR ±1/2° | | CHECKED BY PATEL | DATE 01/29/87 | MOLEX INCORPORATED | | | |
| | | DRAFT WHERE APPLICABLE MUST REMAIN WITHIN DIMENSIONS | | APPROVED BY LENZ | DATE 01/29/87 | THIS DRAWING CONTAINS INFORMATION THAT IS PROPRIETARY TO MOLEX INCORPORATED AND SHOULD NOT BE USED WITHOUT WRITTEN PERMISSION | | | |