

PC PHONO JACKS

Designers' Choice

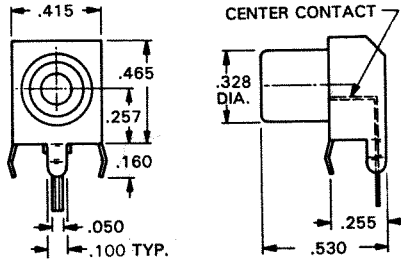
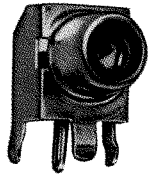


NOTE: All jacks on this page mate with 1/8" diameter pins.

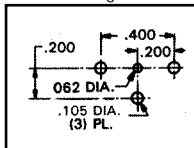
SNAP-FIT 90 PC PHONO JACK

CHOICE OF TIN OR GOLD PLATE

Complete on piece jack for insertion into PC board. Time Saving. No Wiring Required. Snap-fits into PC board.



Mounting Detail



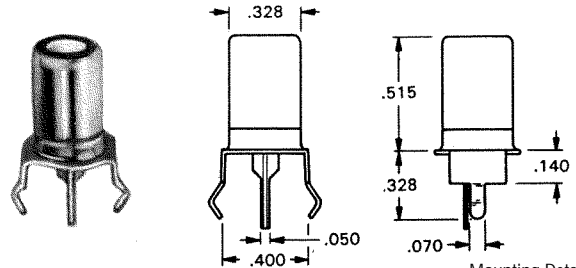
MATERIAL

Shell: Steel
Contact: Brass
Plating: Tin or Gold

CAT. NO. 901 (TIN PLATE)
CAT. NO. 900 (GOLD PLATE)

SNAP-FIT VERTICAL PC PHONO JACK

Extra long, one piece shell to accept plugs with longer pins for greater contact. Snaps into holes on PC Board and firmly held for soldering. No staking required.



Mounting Detail

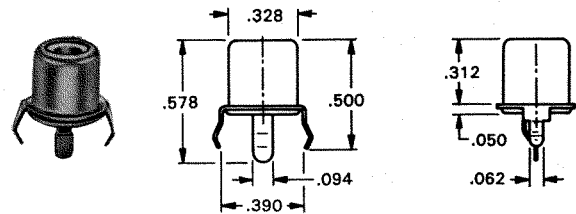
MATERIAL

Shell: Steel
Contact: Brass
Plating: Tin

CAT. NO. 577

SNAP-FIT VERTICAL PC JACK

Snaps into holes on PC Board and firmly held for soldering. No staking required.



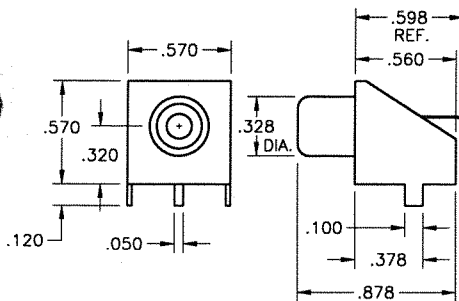
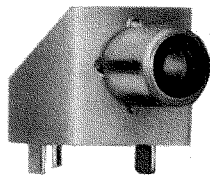
Mounting Detail

MATERIAL

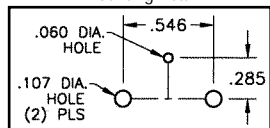
Shell: Steel
Contact: Brass
Plating: Tin

CAT. NO. 572

90° PC PHONO JACK



Mounting Detail



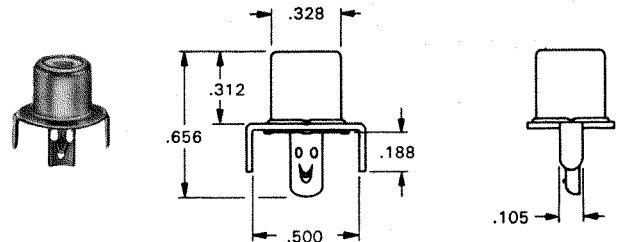
MATERIAL

Shell: Steel - Nickel Plate
Contact: Brass - Tin Plate

CAT. NO. 902

VERTICAL PC PHONO JACK

For applications requiring staking to product



Mounting Detail

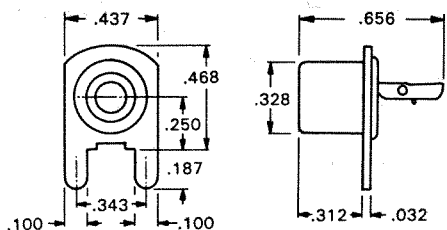
MATERIAL

Shell: Steel
Contact: Brass
Plating: Tin

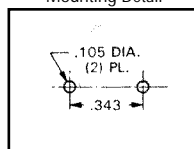
CAT. NO. 573

90° PC PHONO JACK

Mounted on bracket ready for insertion into pre-drilled holes



Mounting Detail



MATERIAL

Shell: Steel
Contact: Brass
Plating: Tin

CAT. NO. 571