



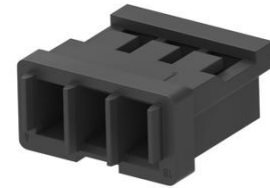
Part Number : [874390301](#)

Product Description : 1.50mm Pitch, Pico-SPOX
Receptacle Crimp Housing, Single Row, Friction Lock, 3
Circuits, Black

Series Number : 87439

Status : Active

Product Category : Connector Housings



Documents & Resources

Drawings

[874390301_sd.pdf](#)

3D Models and Design Files

[STEP AP242](#)

[SOLIDWORKS](#)

[Creo](#)

[874390301.dxf](#)

Specifications

[874370000-AS-000.pdf](#)

[SPK-87439-001-001.pdf](#)

[2027050000-000.pdf](#)

[2027051000-PS-000.pdf](#)


[PS-78047-001-001.pdf](#)

[874371001-PS-001.pdf](#)

[PS-87437-001-001.pdf](#)

Product Environment Compliance

Compliance

GADSL/IMDS	Not Relevant
China RoHS	 per SJ/T 11365-2006
EU ELV	Not Relevant
Low-Halogen Status	Low-Halogen per IEC 61249-2-21

REACH SVHC	Not Contained per D(2025)4165-DC (25 June 2025)
EU RoHS	Compliant per EU 2015/863

Compliance Statements

- EU RoHS
- REACH SVHC
- Low-Halogen

Industry Documents

- IPC 1752A Class C
- IPC 1752A Class D
- Molex Product Compliance Declaration
- IEC-62474
- chemSHERPA (xml)

Substances of Interest

- PFAS

EU RoHS Certificate of Compliance

Additional Product Compliance Information

Part Details

General

Status	Active
Category	Connector Housings
Series	87439
Description	1.50mm Pitch, Pico-SPOX Receptacle Crimp Housing, Single Row, Friction Lock, 3 Circuits, Black
Application	Signal, Wire-to-Board
Product Name	Pico-SPOX
UPC	756054763827

Agency

CSA	LR19980
UL	E29179

Physical

Circuits (maximum)	3
--------------------	---

Color - Resin	Natural
Flammability	94V-0
Gender	Receptacle
Glow-Wire Capable	No
Lock to Mating Part	Yes
Material - Resin	Nylon
Net Weight	48.840/mg
Number of Rows	1
Packaging Type	Bag
Panel Mount	No
Pitch - Mating Interface	1.50mm
Polarized to Mating Part	Yes
Stackable	No
Temperature Range - Operating	-55° to +105°C

Mates With / Use With

Mates with Part(s)

Description	Part Number
Pico-SPOX Vertical, Single Row, Surface Mount Headers	<u>87437</u>
Pico-SPOX Right-Angle, Single Row, Surface Mount Headers	<u>87438</u>

Use with Part(s)

Description	Part Number
Pico-SPOX Female Crimp Terminals	<u>87421</u>