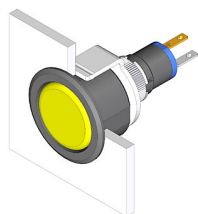


# EAO – Your Expert Partner for Human Machine Interfaces

## 18-167.035 - Illuminated pushbutton actuator

### 18-167.035 - Illuminated pushbutton actuator



*Attention: The preview is based on a sample product. This can differ from your current configuration.*

#### Mounting

Design flush

#### Other Attributes

Weight 0.002 kg

#### IP-Rating

Front protection IP 40

#### Connection Method

Terminal Solder

#### Actuator

Switching action Momentary

#### Switching element

Switching system Snap-action switching element  
Contacts 1 NO  
Switching voltage 42 V AC/DC  
Switching current 0.1 A  
Contact material Gold

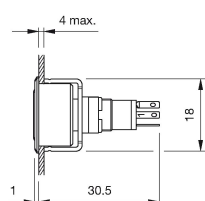
#### Function

Illuminated pushbutton

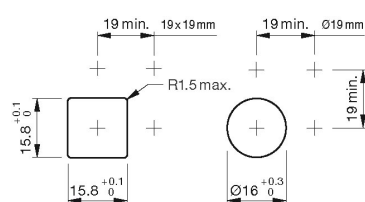
# EAO – Your Expert Partner for Human Machine Interfaces

18-167.035 - Illuminated pushbutton actuator

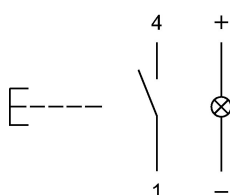
## Dimensions



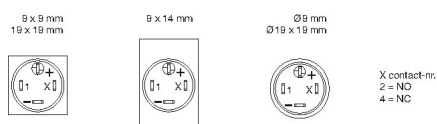
## Mounting cut-outs



## Wiring diagram



## Component layout



## Legend

Contacts: NO = Normally open  
Switching action: B = Momentary