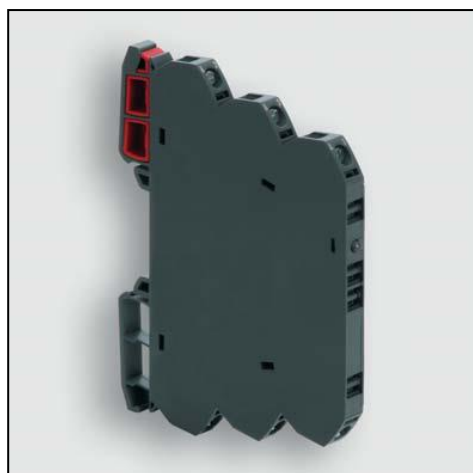


# Datasheet

## LCIS Relay Module

RS Stock number 888-6868



<b>Identification</b>	Type	LCIS-SRKF-DC-3L-200330-S
	Part-No.	8886868

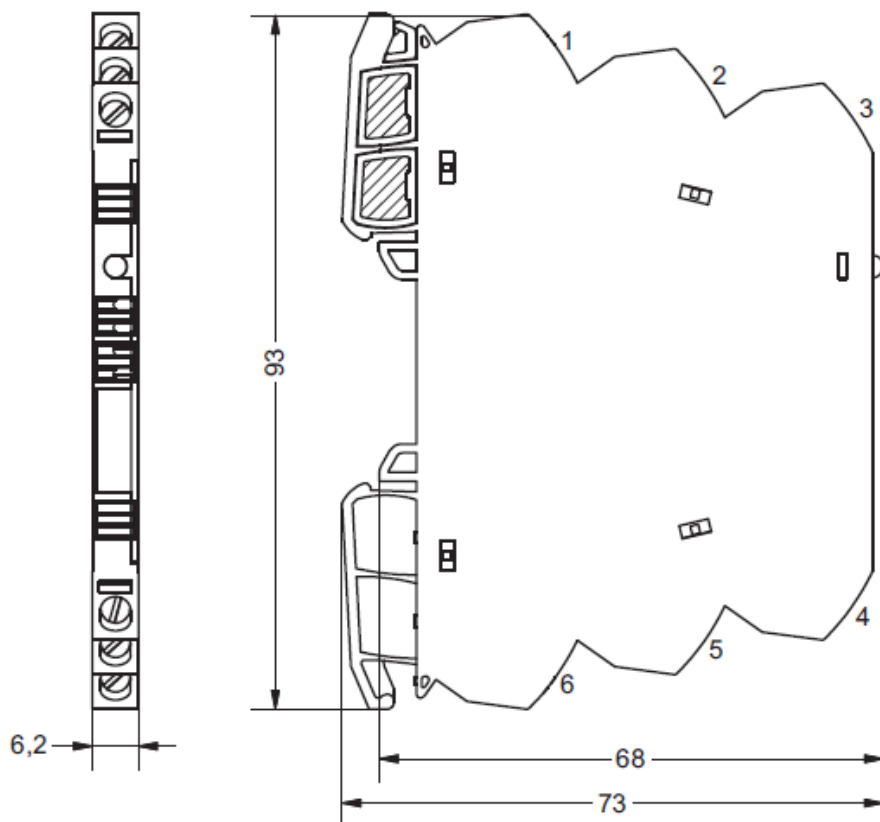
<b>Input</b>	
Input voltage range	11.0 V – 30.0 V
Protection device	Supressor diode
Status Indication	LED green

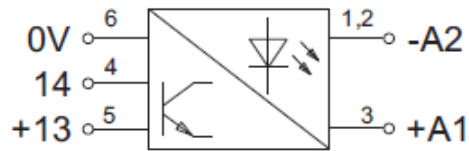
<b>Load Side</b>	
Switching element	MosFet, NO contact
Min. switching voltage	DC 10 V
Max. switching voltage	DC 30 V
Min. switching current	5 mA
Max. switching current	5 A
Leakage current	1 mA
Switch-on delay	< 0,3 ms
Switch-off delay	< 0,4 ms
Switching frequency	100 Hz
Protection device output	Supressor diode

<b>General</b>	
Housing material	PA 6.6 (UL 94 V-0)
Protection class	IP 20

Field installation	rail TS 35 (EN 60175)
Insulation voltage input/output	4.0 kV <sub>eff</sub>
Safe isolation	yes
Operation temperature range	-25 °C – 60 °C
Storage temperature range	-40 °C – 85 °C
Dimensions (w x h x d)	6.2 x 93.0 x 73.0 mm
Weight (kg/piece)	0.030
Approvals	UL, CSA, GL
Termination	Screw terminal: solid 0.25 – 2.5 mm <sup>2</sup> / AWG 20 – 14 fine stranded with ferrule 0.25 – 1.5 mm <sup>2</sup> / AWG 20 – 16 Stripping length: 6 mm Screw driver: 3.5 x 0.5 mm

Dimensions



**PIN assignment**

**Accessories**

Accessories	Color	Article number	Type	PU
Tag holder (quantity 200)	white (5x5 mm)	8886956	LCIS-ZB-BZS-white- 1 00	
Tag holder (quantity 120)	white (12x6 mm)	8886950	LCOS-ZB-BZS-whi- 1 te-12/6	