

ST-REL2-KG220DC/1 - Relay connectors



2826512

<https://www.phoenixcontact.com/in/products/2826512>

Please be informed that the data shown in this PDF document is generated from our online catalog. Please find the complete data in the user documentation. Our general terms of use for downloads are valid.



Relay connector, fitted with miniature switching relay, contacts (AgNi): Medium to large loads, 1 N/O contact, 220 V DC input voltage, with light indicator, can be plugged into basic terminal blocks

Commercial data

| | |
|--------------------------------------|-------------------|
| Item number | 2826512 |
| Packing unit | 10 pc |
| Minimum order quantity | 1 pc |
| Sales key | ***** |
| Product key | DK61B2 |
| Catalog page | Page 87 (IF-2005) |
| GTIN | 4017918077983 |
| Weight per piece (including packing) | 34.74 g |
| Weight per piece (excluding packing) | 32.5 g |
| Customs tariff number | 85364900 |
| Country of origin | DE |

ST-REL2-KG220DC/1 - Relay connectors



2826512

<https://www.phoenixcontact.com/in/products/2826512>

Technical data

Product properties

| | |
|-------------------------|--------------------------------|
| Product type | Relay Module |
| Operating mode | 100% operating factor |
| Mechanical service life | approx. 2×10^7 cycles |

Data management status

| | |
|------------------------------|------------|
| Date of last data management | 02.05.2024 |
|------------------------------|------------|

Electrical properties

| | |
|---|--|
| Maximum power dissipation for nominal condition | 0.99 W |
| Test voltage (Winding/contact) | 2.5 kV AC (50 Hz, 1 min., winding/contact) |

Input data

Coil side

| | |
|--------------------------------|--|
| Nominal input voltage U_N | 220 V DC |
| Input voltage range | 176 V DC ... 242 V DC (20 °C) |
| Drive and function | monostable |
| Drive (polarity) | polarized |
| Typical input current at U_N | 4.5 mA |
| Typical response time | 6 ms (with DC) |
| Typical release time | 11 ms (with DC) |
| Protective circuit | Damping diode, polarity protection; Damping diode, polarity protection diode, varistor |
| Operating voltage display | yes |

Output data

Switching

| | |
|---------------------------------------|------------------------|
| Contact switching type | 1 N/O contact |
| Type of switch contact | Single contact |
| Contact material | AgNi |
| Maximum switching voltage | 250 V AC/DC |
| Limiting continuous current | 6 A |
| Maximum inrush current | 8 A |
| Interrupting rating (ohmic load) max. | 95 W (at 24 V DC) |
| | 50 W (at 48 V DC) |
| | 45 W (at 60 V DC) |
| | 45 W (at 110 V DC) |
| | 75 W (at 220 V DC) |
| | 1500 VA (for 250 V AC) |

Dimensions

ST-REL2-KG220DC/1 - Relay connectors



2826512

<https://www.phoenixcontact.com/in/products/2826512>

| | |
|--------|---------|
| Width | 14.6 mm |
| Height | 33 mm |
| Depth | 66.5 mm |

Material specifications

| | |
|-------|------------------|
| Color | green (RAL 6021) |
|-------|------------------|

Environmental and real-life conditions

Ambient conditions

| | |
|---|------------------|
| Ambient temperature (operation) | -20 °C ... 40 °C |
| Ambient temperature (storage/transport) | -20 °C ... 70 °C |

Standards and regulations

| | |
|-----------------------|--|
| Standards/regulations | DIN VDE 0110b, Gr. C for 250 V DC |
| | IEC 60255/DIN VDE 0435 (in relevant parts) |
| | DIN EN 50178/VDE 0160 (in relevant parts) |
| | EN 60730/DIN VDE 0631 |
| | DIN VDE 0160 (in relevant parts) |

Mounting

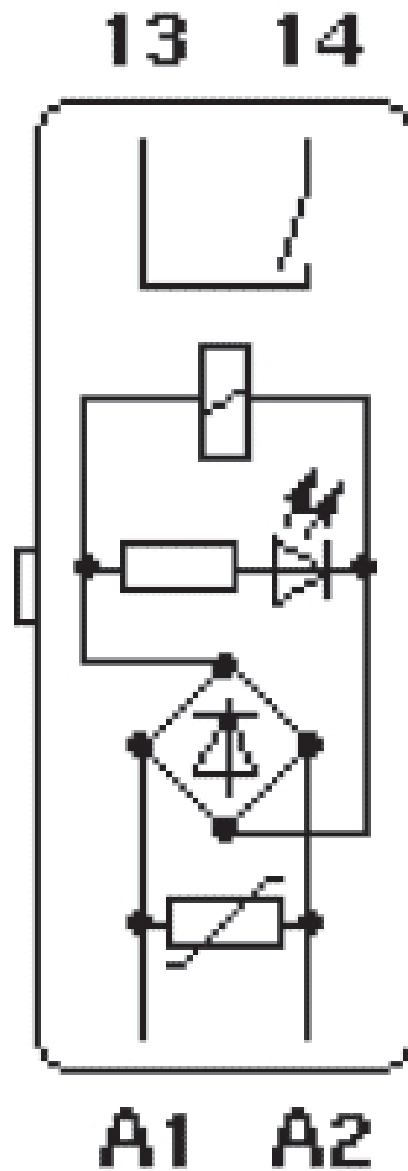
| | |
|---------------|---|
| Mounting type | Plug-in mounting |
| Assembly note | After every 5 modules, spacing of 10 mm |

2826512

<https://www.phoenixcontact.com/in/products/2826512>

Drawings

Circuit diagram



ST-REL2-KG220DC/1 - Relay connectors



2826512

<https://www.phoenixcontact.com/in/products/2826512>

Approvals

🔗 To download certificates, visit the product detail page: <https://www.phoenixcontact.com/in/products/2826512>



EAC

Approval ID: RU*C-DE.*08.B.00010

ST-REL2-KG220DC/1 - Relay connectors



2826512

<https://www.phoenixcontact.com/in/products/2826512>

Classifications

ECLASS

| | |
|-------------|----------|
| ECLASS-11.0 | 27371601 |
| ECLASS-12.0 | 27371601 |
| ECLASS-13.0 | 27371601 |

ETIM

| | |
|----------|----------|
| ETIM 9.0 | EC001437 |
|----------|----------|

UNSPSC

| | |
|-------------|----------|
| UNSPSC 21.0 | 39122300 |
|-------------|----------|

Environmental product compliance

EU RoHS

| | |
|---|--------------|
| Fulfills EU RoHS substance requirements | Yes |
| Exemption | 7(a), 7(c)-I |

China RoHS

| | |
|--|---|
| Environment friendly use period (EFUP) | EFUP-50 |
| | An article-related China RoHS declaration table can be found in the download area for the respective article under "Manufacturer declaration". For all articles with EFUP-E, no China RoHS declaration table issued and required. |

EU REACH SVHC

| | |
|-------------------------------------|---|
| REACH candidate substance (CAS No.) | Hexahydromethylphthalic anhydride(CAS: n/a) |
| | Lead(CAS: 7439-92-1) |
| SCIP | 8777e3ec-94f4-48cf-a828-205682894eb4 |

ST-REL2-KG220DC/1 - Relay connectors



2826512

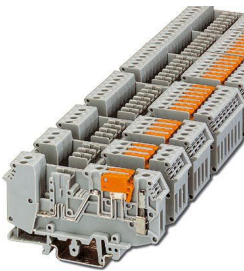
<https://www.phoenixcontact.com/in/products/2826512>

Mandatory accessories

URELG 2-PMTK - Basic terminal block

2820835

<https://www.phoenixcontact.com/in/products/2820835>

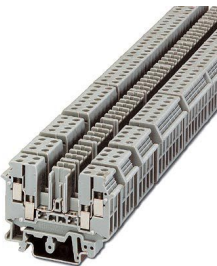


Basic terminal blocks with test pick-off on both sides and knife disconnection for NS 32 and NS 35/7,5 DIN rail, with end cover, for ST-REL..., ST-OV..., and ST-OE... plugs, 2-pos.

UDK-RELG 2 - Basic terminal block

2777030

<https://www.phoenixcontact.com/in/products/2777030>



Basic terminal blocks with test pick-off on both sides and double connections with the same potential for NS 32 and NS 35/7,5 DIN rail, with end cover, for ST-REL..., ST-OV..., and ST-OE... plugs, 2-pos.

ST-REL2-KG220DC/1 - Relay connectors



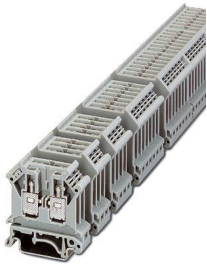
2826512

<https://www.phoenixcontact.com/in/products/2826512>

URELG 2 - Basic terminal block

2820262

<https://www.phoenixcontact.com/in/products/2820262>



Basic termination blocks with screw connection for NS 32 and NS 35/7.5 DIN rail, with end cover, for ST-REL..., ST-OV... and ST-OE... plugs, 2-pos.

ZFK-RELG 2 - Basic terminal block

2829904

<https://www.phoenixcontact.com/in/products/2829904>



Basic termination blocks with spring-cage connection for NS 35/7.5 DIN rail, with end cover, for ST-REL..., ST-OV... and ST-OE... plugs, 2-pos.

Accessories

ST-REL2-KG220DC/1 - Relay connectors

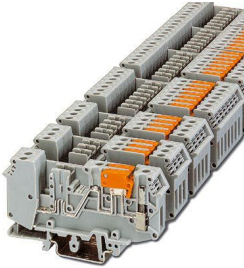
2826512

<https://www.phoenixcontact.com/in/products/2826512>

URELG 2-PMTK - Basic terminal block

2820835

<https://www.phoenixcontact.com/in/products/2820835>



Basic terminal blocks with test pick-off on both sides and knife disconnection for NS 32 and NS 35/7,5 DIN rail, with end cover, for ST-REL..., ST-OV..., and ST-OE... plugs, 2-pos.

UDK-RELG 2 - Basic terminal block

2777030

<https://www.phoenixcontact.com/in/products/2777030>



Basic terminal blocks with test pick-off on both sides and double connections with the same potential for NS 32 and NS 35/7,5 DIN rail, with end cover, for ST-REL..., ST-OV..., and ST-OE... plugs, 2-pos.

ST-REL2-KG220DC/1 - Relay connectors



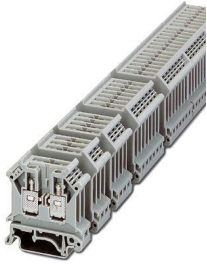
2826512

<https://www.phoenixcontact.com/in/products/2826512>

URELG 2 - Basic terminal block

2820262

<https://www.phoenixcontact.com/in/products/2820262>



Basic termination blocks with screw connection for NS 32 and NS 35/7.5 DIN rail, with end cover, for ST-REL..., ST-OV... and ST-OE... plugs, 2-pos.

ZFK-RELG 2 - Basic terminal block

2829904

<https://www.phoenixcontact.com/in/products/2829904>



Basic termination blocks with spring-cage connection for NS 35/7.5 DIN rail, with end cover, for ST-REL..., ST-OV... and ST-OE... plugs, 2-pos.

Phoenix Contact 2025 © - all rights reserved

<https://www.phoenixcontact.com>

PHOENIX CONTACT (I) Pvt. Ltd.

A-58/2, Okhla Industrial Area, Phase - II, New Delhi-110 020

+91.1275.71420

info@phoenixcontact.co.in