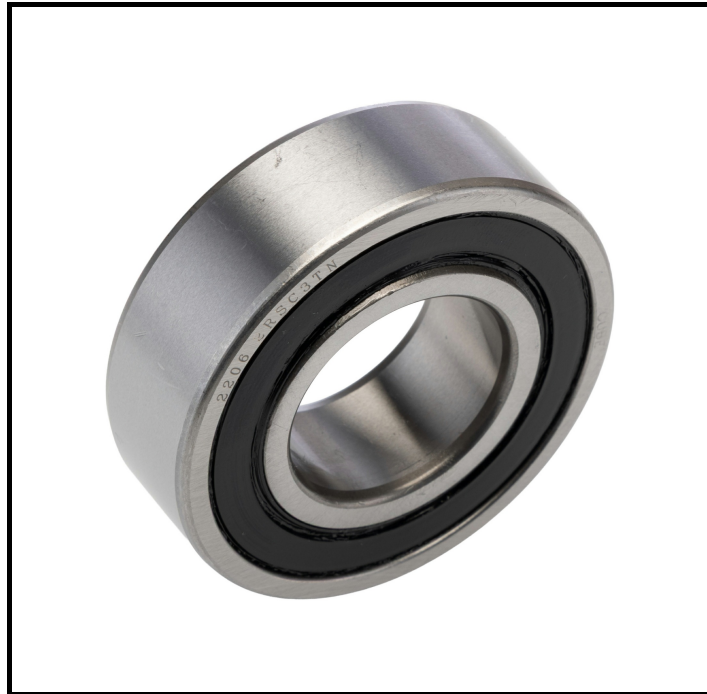


## FEATURES

- **Self-Aligning Design:** Compensates for misalignment, reducing stress on the bearing.
- **Sealed End Type:** Protects against dust and moisture, enhancing durability.
- **Polymer Cage Material:** Offers reduced friction and noise during operation.
- **Dynamic Load Rating of 15.6 kN:** Supports high dynamic loads, suitable for demanding applications.
- **C3 Internal Clearance:** Provides additional clearance for thermal expansion.
- **Limiting Speed of 8000 rpm:** Suitable for high-speed applications.

## RS PRO Self-Aligning Ball Bearing, 30mm Bore

RS Stock No: 291-661



RS Professionally Approved Products bring to you professional quality parts across all product categories. Our product range has been tested by engineers and provides a comparable quality to the leading brands without paying a premium price

## Product Description

This RS PRO self-aligning ball bearing is designed to accommodate misalignment and shaft deflection, making it ideal for applications where precision and reliability are crucial. With a 30mm bore and sealed end type, it ensures protection against contaminants and extends the bearing's lifespan.

## General Specifications

Ball Material	Steel
Bearing Type	Self-Aligning
Bore Type	Parallel
Cage Material	Polymer
Dynamic Load Rating	15.6 kN
End Type	Sealed
Internal Clearance	C3
Limiting Speed	8000 rpm
Number of Rows	2
Product Type	Ball Bearing
Race Material	Steel
Race Type	Plain
Race Width	20 mm
Static Load Rating	4.65 kN

## Mechanical Specifications

Inside Diameter	30 mm
Outside Diameter	62 mm

## Approvals

Standards/Approvals	ANSI-ESD S20.20:2021
---------------------	----------------------

