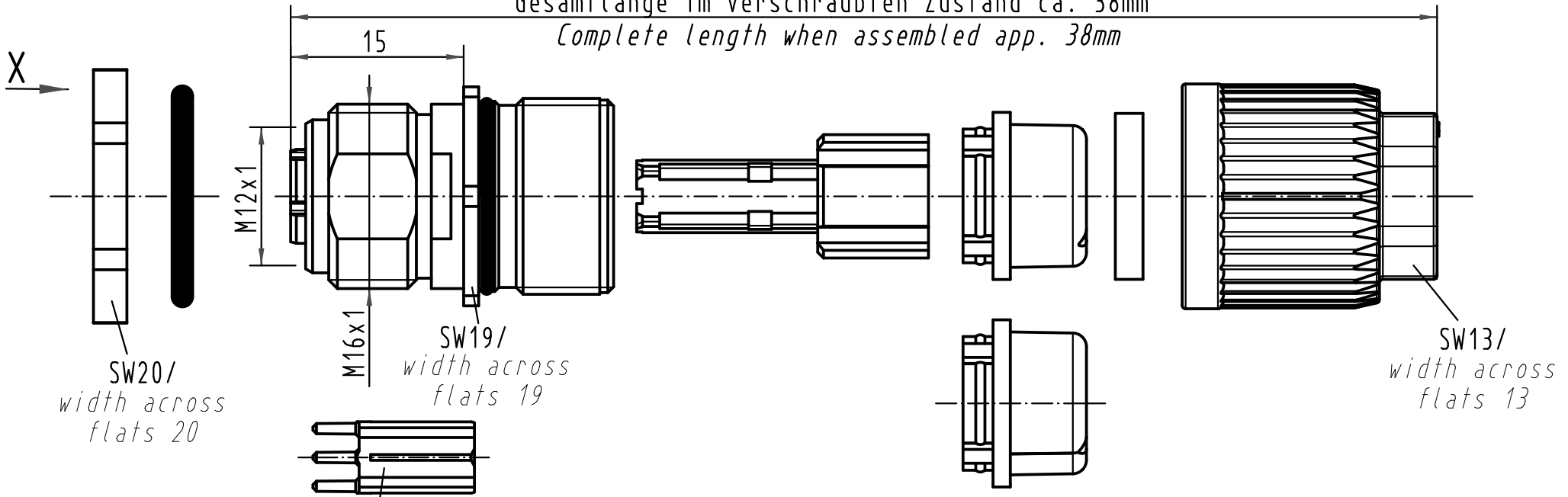




Gesamtlänge im verschraubten Zustand ca. 38mm
 Complete length when assembled app. 38mm



SW20/
width across
flats 20

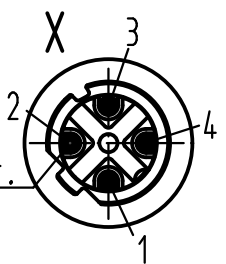
SW19/
width across
flats 19

SW13/
width across
flats 13

Montagehilfe wird lose beigelegt/
assembly aid enclosed

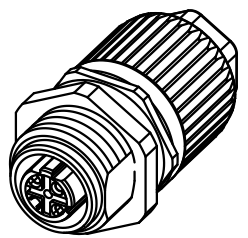
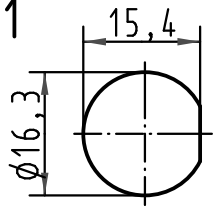
Crimpkontakte separat bestellen
Order contacts separately

Steckgesicht n.
Contact face acc.
IEC 61067-2-101



Montageausschnitt/
panel cut out

1:1



Kabelø / Cableø		Leiterø Wire gauge	Bestell-Nr. Part-No.
4,5-5,4mm	7.0-8.8mm	AWG 26-22	61 03 000 0096
Dichtung / Sealing		AWG 22-20	61 03 000 0074
transparent	beige		

All Dimensions in mm Original Size DIN A 4			Techn. Character.			Nicht tolerierte Maßel Free size tolerances		
414337	17.06.09	DY		Dat.	Name	Maßstab/Scale 2:1	Wanddurchführung M12 crimp Panel feed through M12 crimp 4polig Buchse D-kodiert geschirmt 4poles female D-coded shielded	
414043	28.07.08	DY	Detail.	29.08.07	Ho			
414008	14.07.08	Ho	Insp.		SUN			
413880	16.05.08	Ho	Stand.					
413789	07.04.08	DY	HARTING Electronics GmbH & Co. KG				TB 21 03 882 2425	
413163			D-32339 ESPELKAMP					
Mod.	Dat.	Name				Sub.	Blatt/ page	