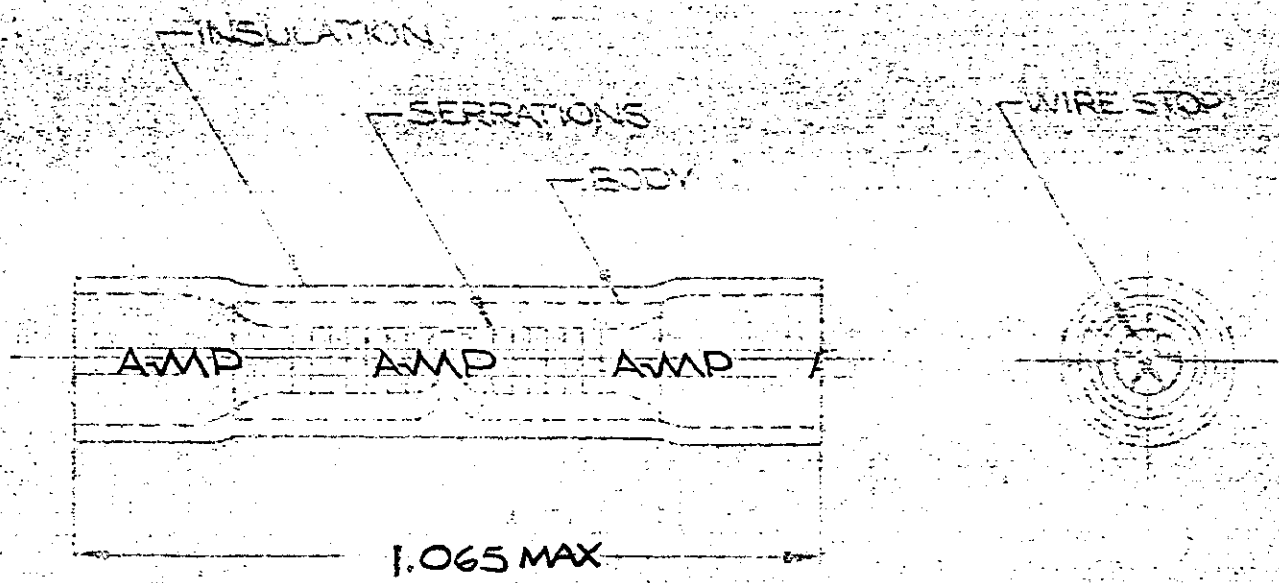



© 1951 BY AMP INCORPORATED. ALL RIGHTS RESERVED. AMP PRODUCTS COVERED BY PATENTS AND/OR PATENTS PENDING.

REVISIONS

LTR	DESCRIPTION	DATE	APPROVED
C	REDRAWN & ADDED TAPE NO. P-6782 JB	2-9-72	Jme
D	REVISED PER ECN G-1216	7-21-72	Jme
E	REVISED P-7189	11-7-73	Jme
F	REVISED P-7403	5-1-75	Lwd
G	REVISED /0720-0036-93	3-2-93	me



FOR .105 TO .140 WIRE INSULATION DIA.

100	LOOSE PC. BOX	8-34068-1	
	34068 ON TAPE	2-34068-1	INSULATION, P/C COLOR BLUE
	WIRE SPLICE	34068	BODY: COPPER (99.95%) TN PL (MIL-PT-22)
QTY	DESCRIPTION	PART NO.	MATERIAL & FINISH
UNLESS OTHERWISE SPECIFIED DIMENSIONS ARE IN INCHES TOLERANCES ON: DIMENSIONS .0005 ANGLES .5°		CONTRACT NO.	 AMP INCORPORATED HARRISBURG, PENNSYLVANIA
MATERIAL		DR. <i>Harry Red</i> 2-7-72 C. <i>Jim Eschinger</i> 2-9-72 APPRO. <i>Abel</i> 2-9-72	
FREE TAPE		SIZE	WIRE SPLICE PLASTI-GRIP BUTT WIRE SIZE 16-14
		0302 (CONT. NO.)	34068
		OTHER APP'D	

CUSTOMER-DRAWING