

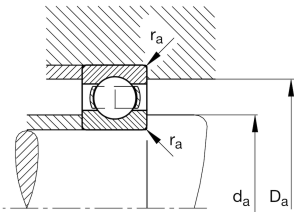
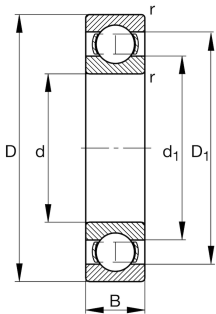
FAG

61864-M-C3

Deep groove ball bearing

Deep groove ball bearing 618...-M, single row, solid brass cage

Technical information



Your current product variant

Sealing	Without	Not sealed
Cage	M	Solid brass cage, rolling element guided
Tolerance class	PN	Normal (PN)
Dimensional / heat stabilization	S1	Rings dimensional stabilized up to 200°
Lubricant	Without	Bearing not greased
Radial internal clearance	C3 (Group 3)	Internal clearance larger than CN
Bore type	Z	Cylindrical

Main Dimensions & Performance Data

d	320 mm	Bore diameter
D	400 mm	Outside diameter
B	38 mm	Width
C <sub>r</sub>	154,000 N	Basic dynamic load rating, radial
C <sub>0r</sub>	213,000 N	Basic static load rating, radial
C <sub>ur</sub>	6,500 N	Fatigue load limit, radial
n <sub>G</sub>	2,750 1/min	Limiting speed
n <sub>gr</sub>	1,710 1/min	Reference speed
≈m	11.2 kg	Weight



Mounting dimensions

$d_{a\min}$	330.2 mm	Minimum diameter shaft shoulder
$D_{a\max}$	389.8 mm	Maximum diameter of housing shoulder
$r_{a\max}$	2.1 mm	Maximum fillet radius

Dimensions

$r_{\min}$	2.1 mm	Minimum chamfer dimension
$D_1$	373.75 mm	Shoulder diameter outer ring
$d_1$	346.95 mm	Shoulder diameter inner ring

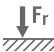
Temperature range

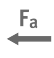
$T_{\min}$	-30 °C	Operating temperature min.
$T_{\max}$	200 °C	Operating temperature max.


Calculation factors


$f_0$	16	Calculation factor
-------	----	--------------------


Characteristics


- 

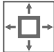
Radial load
- 

Axial load in one direction
- 

Axial load in two directions
- 

Grease Lubrication
- 

Oil Lubrication
- 

Not sealed
- 

Large bearing