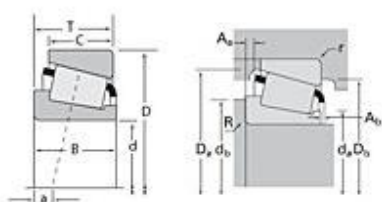




The Timken Company
 4500 Mt Pleasant St. NW
 N. Canton, OH 44720
Phone: (234) 262-3000
E-Mail: CustomerCAD@timken.com • **Web site:** www.timken.com

Timken Part Number JM207049 - JM207010, Tapered Roller Bearings - TS (Tapered Single) Metric

This is the most basic and most widely used type of tapered roller bearing. It consists of two main separable parts: the cone (inner ring) assembly and the cup (outer ring). It is typically mounted in opposing pairs on a shaft.



[Specifications](#) | [Dimensions](#) | [Abutment and Fillet Dimensions](#) | [Basic Load Ratings](#) | [Factors](#)

Specifications

Series	M207000
Cone Part Number	JM207049
Cup Part Number	JM207010
Design Units	Metric
Bearing Weight	0.800 Kg 1.80 lb
Cage Type	Stamped Steel

Dimensions

d - Bore	55.000 mm 2.1654 in
D - Cup Outer Diameter	95.000 mm 3.7402 in

B - Cone Width	29.000 mm 1.1417 in
C - Cup Width	23.500 mm 0.9252 in
T - Bearing Width	29.000 mm 1.1417 in

Abutment and Fillet Dimensions

R - Cone Backface "To Clear" Radius¹	1.520 mm 0.060 in
r - Cup Backface "To Clear" Radius²	2.54 mm 0.100 in
da - Cone Frontface Backing Diameter	61.98 mm 2.44 in
db - Cone Backface Backing Diameter	64.01 mm 2.52 in
Da - Cup Frontface Backing Diameter	91.90 mm 3.62 in
Db - Cup Backface Backing Diameter	85.09 mm 3.35 in
Ab - Cage-Cone Frontface Clearance	3 mm 0.12 in
Aa - Cage-Cone Backface Clearance	0.8 mm 0.03 in
a - Effective Center Location³	-7.60 mm -0.30 in

Basic Load Ratings

C90 - Dynamic Radial Rating (90 million revolutions)⁴	33800 N 7610 lbf
C1 - Dynamic Radial Rating (1 million revolutions)⁵	131000 N 29300 lbf
C0 - Static Radial Rating	168000 N 37700 lbf
C_{a90} - Dynamic Thrust Rating (90 million revolutions)⁶	19400 N 4360 lbf

Factors



K - Factor⁷	1.74
e - ISO Factor⁸	0.33
Y - ISO Factor⁹	1.79
G1 - Heat Generation Factor (Roller-Raceway)	56.4
G2 - Heat Generation Factor (Rib-Roller End)	19.9
Cg - Geometry Factor	0.0937

¹ These maximum fillet radii will be cleared by the bearing corners.

² These maximum fillet radii will be cleared by the bearing corners.

³ Negative value indicates effective center inside cone backface.

⁴ Based on 90×10^6 revolutions L_{10} life, for The Timken Company life calculation method. C_{90} and C_{a90} are radial and thrust values.

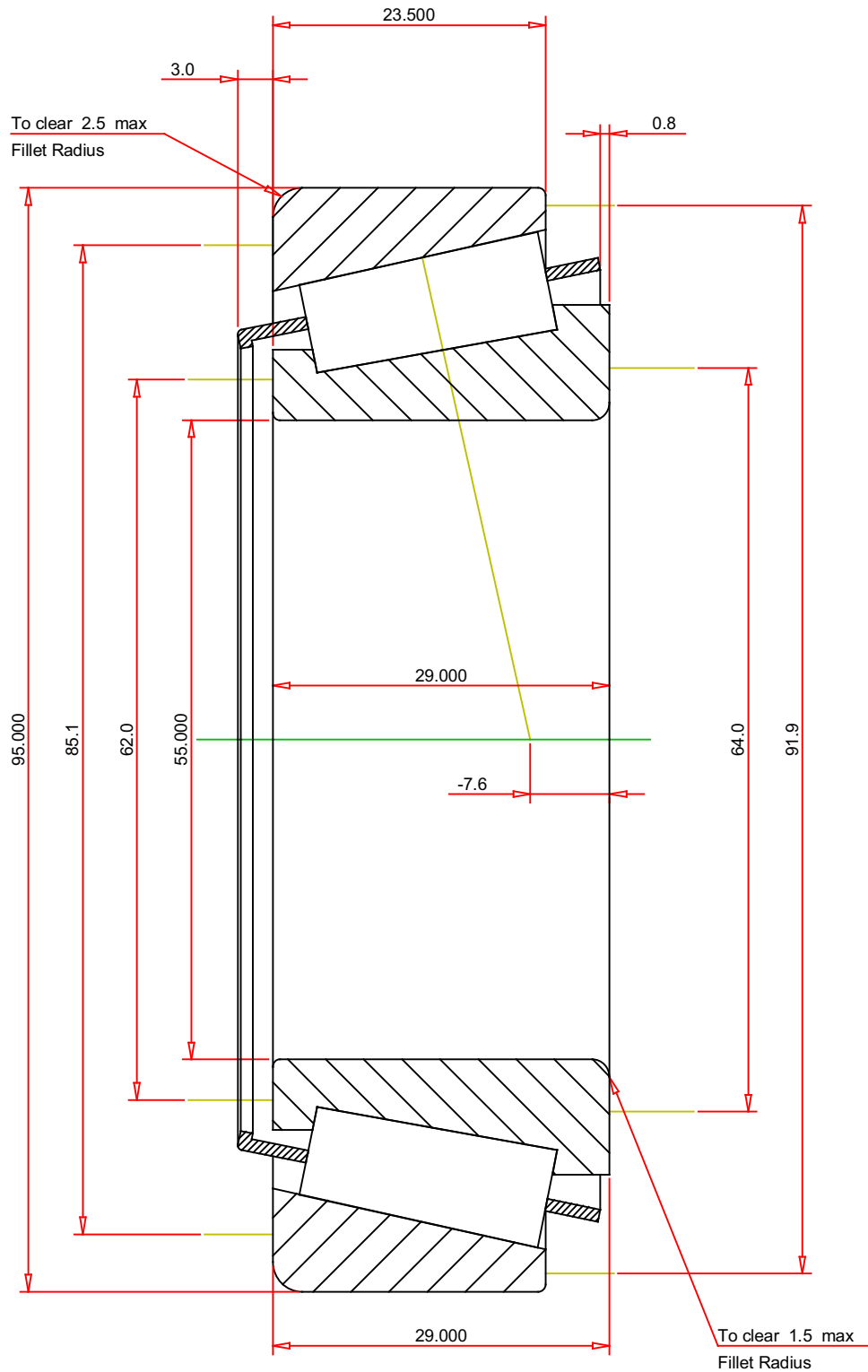
⁵ Based on 1×10^6 revolutions L_{10} life, for the ISO life calculation method.

⁶ Based on 90×10^6 revolutions L_{10} life, for The Timken Company life calculation method. C_{90} and C_{a90} are radial and thrust values for a single-row, $C_{90(2)}$ is the two-row radial value.

⁷ These factors apply for both inch and metric calculations. Consult your Timken representative for instruction on use.

⁸ These factors apply for both inch and metric calculations. Consult your Timken representative for instruction on use.

⁹ These factors apply for both inch and metric calculations. Consult your Timken representative for instruction on use.



METRIC UNITS

ISO Factor - e	0.33
ISO Factor - Y	1.79
Bearing Weight	0.8 kg
Number of Rollers Per Row	19
Effective Center Location	-7.6 mm

TIMKEN®

THE TIMKEN COMPANY
NORTH CANTON, OHIO USA

JM207049 - JM207010
TS BEARING ASSEMBLY

K Factor	1.74
Dynamic Radial Rating - C90	33800 N
Dynamic Thrust Rating - Ca90	19400 N
Static Radial Rating - C0	168000 N
Dynamic Radial Rating - C1	131000 N

Every reasonable effort has been made to ensure the accuracy of the information contained in this writing, but no liability is accepted for errors, omissions or for any other reason.

FOR DISCUSSION ONLY