



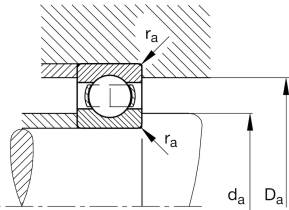
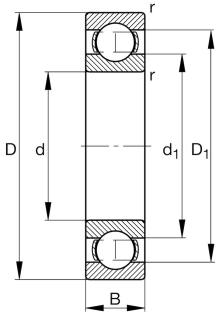
FAG

6304-TVH-C3

Deep groove ball bearing

Deep groove ball bearing 63...TVH, single row, plastic cage

Technical information



Your current product variant

Sealing	Without	Not sealed
Cage	TVH	Solid cage made of glass-fiber reinforced polyamid PA66
Tolerance class	PN	Normal (PN)
Dimensional / heat stabilization	SN	Rings dimensional stabilized up to 120°
Lubricant	Without	Bearing not greased
Radial internal clearance	C3 (Group 3)	Internal clearance larger than CN
Bore type	Z	Cylindrical

Main Dimensions & Performance Data

d	20 mm	Bore diameter
D	52 mm	Outside diameter
B	15 mm	Width
C _r	16,900 N	Basic dynamic load rating, radial
C _{0r}	7,900 N	Basic static load rating, radial
C _{ur}	540 N	Fatigue load limit, radial
n _G	19,800 1/min	Limiting speed
n _{gr}	14,400 1/min	Reference speed
m	0.14 kg	Weight



Mounting dimensions

$d_{a\min}$	27 mm	Minimum diameter shaft shoulder
$D_{a\max}$	45 mm	Maximum diameter of housing shoulder
$r_{a\max}$	1 mm	Maximum fillet radius

Dimensions

r_{\min}	1.1 mm	Minimum chamfer dimension
D_1	41.95 mm	Shoulder diameter outer ring
D_2	44.4 mm	Caliber diameter outer ring
d_1	30.3 mm	Shoulder diameter inner ring


Temperature range

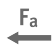
T_{\min}	-30 °C	Operating temperature min.
T_{\max}	120 °C	Operating temperature max.


Calculation factors


f_0	12.4	Calculation factor
-------	------	--------------------


Characteristics


- 

Radial load
- 

Axial load in one direction
- 

Axial load in two directions
- 

Grease Lubrication
- 

Oil Lubrication
- 

Not sealed