

BC 161,6 DKL S KMGY - Housing cover



2202451

<https://www.phoenixcontact.com/in/products/2202451>

Please be informed that the data shown in this PDF document is generated from our online catalog. Please find the complete data in the user documentation. Our general terms of use for downloads are valid.



DIN rail housing for use in distribution boards in accordance with DIN 43880, Hinged cover, can be sealed, width: 161.6 mm, height: 45 mm, depth: 8 mm, color: light gray (similar RAL 7035)

Your advantages

- Coordinated housing and connection system for faster device development
- Individual online configuration for diverse applications in building automation
- Variety of connection technology
- Can be mounted on the DIN rail or the wall
- With DIN-rail-mountable bus connector and power connector system as an option
- Tool-free mounting
- Available in overall widths from 1 ... 9 width units (17.8 mm ... 161.6 mm)
- Compliant with DIN EN 43880

Commercial data

Item number	2202451
Packing unit	10 pc
Minimum order quantity	10 pc
Note	Made to order (non-returnable)
Sales key	*****
Product key	ACHBAB
GTIN	4055626115467
Weight per piece (including packing)	21.17 g
Weight per piece (excluding packing)	21 g
Customs tariff number	84879090
Country of origin	DE

BC 161,6 DKL S KMGY - Housing cover



2202451

<https://www.phoenixcontact.com/in/products/2202451>

Technical data

Product properties

Product type	Cover
Housing type	DIN rail housing for use in distribution boards in accordance with DIN 43880
Housing series	BC
Product family	BC 161,6..
Type	Hinged cover, can be sealed
Ventilation openings present	no

Dimensions

Width	161.6 mm
Height	45 mm
Depth	8 mm

Material specifications

Color (Housing)	light gray (RAL 7035)
Flammability rating according to UL 94	V0
Housing material	PC
Surface characteristics	untreated

Environmental and real-life conditions

Vibration test

Specification	IEC 60068-2-6:2007-12
Frequency	10 - 150 - 10 Hz
Sweep speed	1 octave/min
Amplitude	0.15 mm (10 Hz ... 58.1 Hz)
Acceleration	2g (58.1 Hz ... 150 Hz)
Test duration per axis	2.5 h
Test directions	X-, Y- and Z-axis

Glow-wire test

Specification	IEC 60695-2-11:2014-02
Temperature	850 °C
Time of exposure	30 s

Mechanical strength / tumbling barrel

Specification	IEC 60068-2-31:2008-05
Height of fall	50 cm
Frequency	50

Shocks

Specification	IEC 60068-2-27:2008-02
Pulse shape	Half-sine

BC 161,6 DKL S KMGY - Housing cover



2202451

<https://www.phoenixcontact.com/in/products/2202451>

Acceleration	15g
Shock duration	11 ms
Number of shocks per direction	3
Test directions	X-, Y- and Z-axis (pos. and neg.)

Degree of protection (IP code)

Specification	IEC 60529:1989-11 + AMD 1:1999-11 + AMD 2:2013-08
---------------	---

Ambient conditions

Max. IP code to attain	IP20
Ambient temperature (operation)	-40 °C ... 105 °C (depending on power dissipation)
Ambient temperature (storage/transport)	-40 °C ... 70 °C
Ambient temperature (assembly)	-5 °C ... 100 °C
Relative humidity (storage/transport)	95 %

Mounting

Mounting type	can be swiveled and sealed
---------------	----------------------------

Packaging specifications

Type of packaging	Box packaging
-------------------	---------------

BC 161,6 DKL S KMGY - Housing cover



2202451

<https://www.phoenixcontact.com/in/products/2202451>

Approvals

📄 To download certificates, visit the product detail page: <https://www.phoenixcontact.com/in/products/2202451>



UL Recognized

Approval ID: E240868

BC 161,6 DKL S KMGY - Housing cover



2202451

<https://www.phoenixcontact.com/in/products/2202451>

Classifications

ECLASS

ECLASS-11.0	27182702
ECLASS-13.0	27190603

ETIM

ETIM 9.0	EC002779
----------	----------

UNSPSC

UNSPSC 21.0	31261500
-------------	----------

BC 161,6 DKL S KMGY - Housing cover



2202451

<https://www.phoenixcontact.com/in/products/2202451>

Environmental product compliance

EU RoHS	
Fulfills EU RoHS substance requirements	Yes, No exemptions
China RoHS	
Environment friendly use period (EFUP)	EFUP-E
	No hazardous substances above the limits
EU REACH SVHC	
REACH candidate substance (CAS No.)	No substance above 0.1 wt%

BC 161,6 DKL S KMGY - Housing cover



2202451

<https://www.phoenixcontact.com/in/products/2202451>

Mandatory accessories

BC 161,6 OT U11 BK VPE80 - Upper housing part

1006944

<https://www.phoenixcontact.com/in/products/1006944>

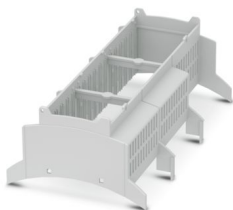


DIN rail housing for use in distribution boards in accordance with DIN 43880, Upper housing part (U11) with vents, Installation depth connection technology: 11.1 mm, width: 161.6 mm, height: 89.7 mm, depth: 54.85 mm, color: black (similar RAL 9005)

BC 161,6 OT 212122 KMGY VPE80 - Upper housing part

1015337

<https://www.phoenixcontact.com/in/products/1015337>



DIN rail housing for use in distribution boards in accordance with DIN 43880, modular upper housing part, width: 161.6 mm, height: 89.7 mm, depth: 54.85 mm, color: light gray (similar RAL 7035)

BC 161,6 DKL S KMGY - Housing cover

2202451

<https://www.phoenixcontact.com/in/products/2202451>



BC 161,6 OT 222121 BK - Upper housing part

1046793

<https://www.phoenixcontact.com/in/products/1046793>

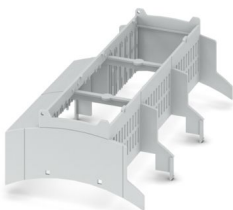


DIN rail housing for use in distribution boards in accordance with DIN 43880, modular upper housing part, width: 161.6 mm, height: 89.7 mm, depth: 54.85 mm, color: black (similar RAL 9005)

BC 161,6 OT 020222 GY7035 - Upper housing part

1048934

<https://www.phoenixcontact.com/in/products/1048934>



DIN rail housing for use in distribution boards in accordance with DIN 43880, modular upper housing part, width: 161.6 mm, height: 89.7 mm, depth: 54.85 mm, color: light gray (similar RAL 7035)

BC 161,6 DKL S KMGY - Housing cover

2202451

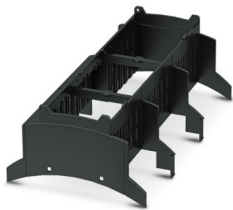
<https://www.phoenixcontact.com/in/products/2202451>



BC 161,6 OT 121222 BK VPE80 - Upper housing part

1059320

<https://www.phoenixcontact.com/in/products/1059320>

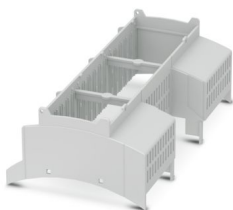


DIN rail housing for use in distribution boards in accordance with DIN 43880, modular upper housing part, width: 161.6 mm, height: 89.7 mm, depth: 54.85 mm, color: black (similar RAL 9005)

BC 161,6 OT 202220 KMGY VPE80 - Upper housing part

1074661

<https://www.phoenixcontact.com/in/products/1074661>



DIN rail housing for use in distribution boards in accordance with DIN 43880, modular upper housing part, width: 161.6 mm, height: 89.7 mm, depth: 54.85 mm, color: light gray (similar RAL 7035)

BC 161,6 DKL S KMGY - Housing cover

2202451

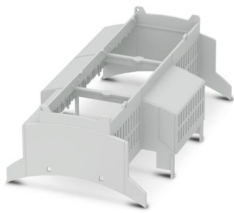
<https://www.phoenixcontact.com/in/products/2202451>



BC 161,6 OT 120002 KMGY - Upper housing part

1080054

<https://www.phoenixcontact.com/in/products/1080054>

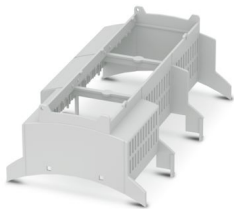


DIN rail housing for use in distribution boards in accordance with DIN 43880, modular upper housing part, width: 161.6 mm, height: 89.7 mm, depth: 54.85 mm, color: light gray (similar RAL 7035)

BC 161,6 OT 110202 KMGY VPE80 - Upper housing part

1080949

<https://www.phoenixcontact.com/in/products/1080949>



DIN rail housing for use in distribution boards in accordance with DIN 43880, modular upper housing part, width: 161.6 mm, height: 89.7 mm, depth: 54.85 mm, color: light gray (similar RAL 7035)

BC 161,6 DKL S KMGY - Housing cover

2202451

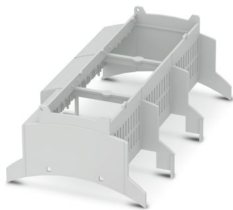
<https://www.phoenixcontact.com/in/products/2202451>



BC 161,6 OT 120202 KMGY MOQ100 - Upper housing part

1087950

<https://www.phoenixcontact.com/in/products/1087950>

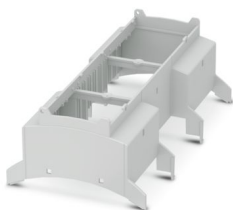


DIN rail housing for use in distribution boards in accordance with DIN 43880, modular upper housing part, width: 161.6 mm, height: 89.7 mm, depth: 54.85 mm, color: light gray (similar RAL 7035)

BC 161,6 OT 1C1C2C2C1C1C KMGY - Upper housing part

1096568

<https://www.phoenixcontact.com/in/products/1096568>



DIN rail housing for use in distribution boards in accordance with DIN 43880, modular upper housing part, width: 161.6 mm, height: 89.7 mm, depth: 54.85 mm, color: light gray (similar RAL 7035)

BC 161,6 DKL S KMGY - Housing cover

2202451

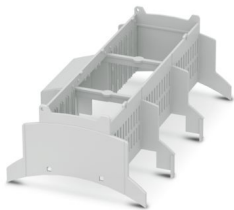
<https://www.phoenixcontact.com/in/products/2202451>



BC 161,6 OT 220222 KMGY MOQ100 - Upper housing part

1126202

<https://www.phoenixcontact.com/in/products/1126202>

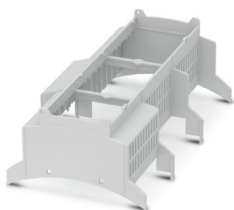


DIN rail housing for use in distribution boards in accordance with DIN 43880, modular upper housing part, width: 161.6 mm, height: 89.7 mm, depth: 54.85 mm, color: light gray (similar RAL 7035)

BC 161,6 OT 110212 KMGY MOQ100 - Upper housing part

1153038

<https://www.phoenixcontact.com/in/products/1153038>



DIN rail housing for use in distribution boards in accordance with DIN 43880, modular upper housing part, width: 161.6 mm, height: 89.7 mm, depth: 54.85 mm, color: light gray (similar RAL 7035)

BC 161,6 DKL S KMGY - Housing cover

2202451

<https://www.phoenixcontact.com/in/products/2202451>



BC 161,6 OT 0C20C20C2 KMGY - Upper housing part

1218565

<https://www.phoenixcontact.com/in/products/1218565>



DIN rail housing for use in distribution boards in accordance with DIN 43880, modular upper housing part, width: 161.6 mm, height: 89.7 mm, depth: 54.85 mm, color: light gray (similar RAL 7035)

BC 161,6 OT 0C20C20C2 WH - Upper housing part

1252986

<https://www.phoenixcontact.com/in/products/1252986>



DIN rail housing for use in distribution boards in accordance with DIN 43880, modular upper housing part, width: 161.6 mm, height: 89.7 mm, depth: 54.85 mm, color: traffic white (similar RAL 9016)

BC 161,6 DKL S KMGY - Housing cover

2202451

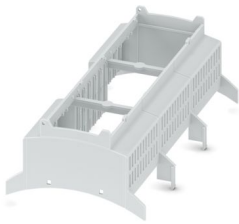
<https://www.phoenixcontact.com/in/products/2202451>



BC 161,6 OT 112111 KMGY - Upper housing part

1255434

<https://www.phoenixcontact.com/in/products/1255434>

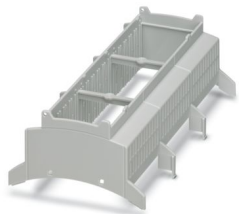


DIN rail housing for use in distribution boards in accordance with DIN 43880, modular upper housing part, width: 161.6 mm, height: 89.7 mm, depth: 54.85 mm, color: light gray (similar RAL 7035)

BC 161,6 OT 212121 KMGY VPE80 - Upper housing part

1300089

<https://www.phoenixcontact.com/in/products/1300089>



DIN rail housing for use in distribution boards in accordance with DIN 43880, modular upper housing part, width: 161.6 mm, height: 89.7 mm, depth: 54.85 mm, color: light gray (similar RAL 7035)

BC 161,6 DKL S KMGY - Housing cover

2202451

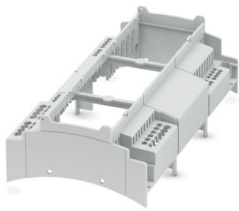
<https://www.phoenixcontact.com/in/products/2202451>



BC 161,6 OT 2P2K1P0C1D1K KMGY - Upper housing part

1335979

<https://www.phoenixcontact.com/in/products/1335979>

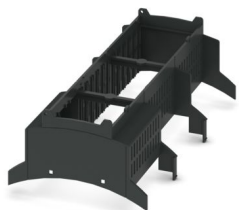


DIN rail housing for use in distribution boards in accordance with DIN 43880, modular upper housing part, SPT-THR, width: 161.6 mm, height: 89.7 mm, depth: 54.85 mm, color: light gray (similar RAL 7035)

BC 161,6 OT 112222 BK - Upper housing part

1389116

<https://www.phoenixcontact.com/in/products/1389116>



DIN rail housing for use in distribution boards in accordance with DIN 43880, modular upper housing part, width: 161.6 mm, height: 89.7 mm, depth: 54.85 mm, color: black (similar RAL 9005)

BC 161,6 DKL S KMGY - Housing cover

2202451

<https://www.phoenixcontact.com/in/products/2202451>



BC 161,6 OT 000000 BK MOQ100 - Upper housing part

1454292

<https://www.phoenixcontact.com/in/products/1454292>



DIN rail housing for use in distribution boards in accordance with DIN 43880, modular upper housing part, width: 161.6 mm, height: 89.7 mm, depth: 54.85 mm, color: black (similar RAL 9005)

BC 161,6 OT 212222 BK - Upper housing part

1684635

<https://www.phoenixcontact.com/in/products/1684635>



DIN rail housing for use in distribution boards in accordance with DIN 43880, modular upper housing part, width: 161.6 mm, height: 89.7 mm, depth: 54.85 mm, color: black (similar RAL 9005)

BC 161,6 DKL S KMGY - Housing cover

2202451

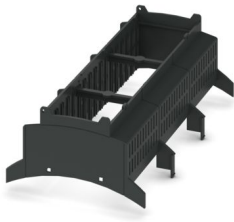
<https://www.phoenixcontact.com/in/products/2202451>



BC 161,6 OT 212121 BK - Upper housing part

1760654

<https://www.phoenixcontact.com/in/products/1760654>

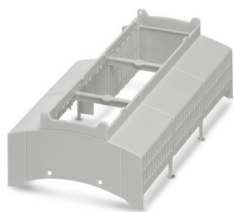


DIN rail housing for use in distribution boards in accordance with DIN 43880, modular upper housing part, width: 161.6 mm, height: 89.7 mm, depth: 54.85 mm, color: black (similar RAL 9005)

BC 161,6 OT 000020 KMGY - Upper housing part

2201450

<https://www.phoenixcontact.com/in/products/2201450>



DIN rail housing for use in distribution boards in accordance with DIN 43880, modular upper housing part, width: 161.6 mm, height: 89.7 mm, depth: 54.85 mm, color: light gray (similar RAL 7035)

BC 161,6 DKL S KMGY - Housing cover

2202451

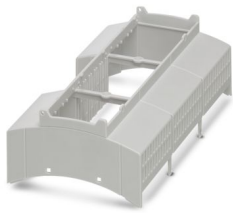
<https://www.phoenixcontact.com/in/products/2202451>



BC 161,6 OT 002000 KMGY - Upper housing part

2201451

<https://www.phoenixcontact.com/in/products/2201451>



DIN rail housing for use in distribution boards in accordance with DIN 43880, modular upper housing part, width: 161.6 mm, height: 89.7 mm, depth: 54.85 mm, color: light gray (similar RAL 7035)

BC 161,6 OT 000022 KMGY - Upper housing part

2201454

<https://www.phoenixcontact.com/in/products/2201454>



DIN rail housing for use in distribution boards in accordance with DIN 43880, modular upper housing part, width: 161.6 mm, height: 89.7 mm, depth: 54.85 mm, color: light gray (similar RAL 7035)

BC 161,6 DKL S KMGY - Housing cover

2202451

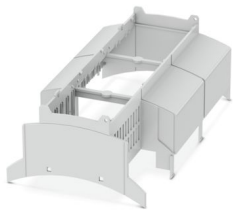
<https://www.phoenixcontact.com/in/products/2202451>



BC 161,6 OT 0C0C0C0C22 KMGY - Upper housing part

2201455

<https://www.phoenixcontact.com/in/products/2201455>



DIN rail housing for use in distribution boards in accordance with DIN 43880, modular upper housing part, width: 161.6 mm, height: 89.7 mm, depth: 54.85 mm, color: light gray (similar RAL 7035)

BC 161,6 OT U22 KMGY VPE80 - Upper housing part

2201599

<https://www.phoenixcontact.com/in/products/2201599>



DIN rail housing for use in distribution boards in accordance with DIN 43880, Upper housing part (U22) with vents, Installation depth connection technology: 22.35 mm, width: 161.6 mm, height: 89.7 mm, depth: 54.85 mm, color: light gray (similar RAL 7035)

BC 161,6 DKL S KMGY - Housing cover

2202451

<https://www.phoenixcontact.com/in/products/2202451>



BC 161,6 OT U22 BK - Upper housing part

2201665

<https://www.phoenixcontact.com/in/products/2201665>

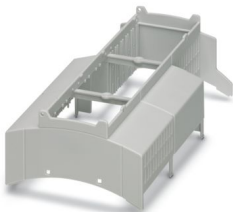


DIN rail housing for use in distribution boards in accordance with DIN 43880, Upper housing part (U22) with vents, Installation depth connection technology: 22.35 mm, width: 161.6 mm, height: 89.7 mm, depth: 54.85 mm, color: black (similar RAL 9005)

BC 161,6 OT 000C0C22 KMGY - Upper housing part

2201678

<https://www.phoenixcontact.com/in/products/2201678>



DIN rail housing for use in distribution boards in accordance with DIN 43880, modular upper housing part, width: 161.6 mm, height: 89.7 mm, depth: 54.85 mm, color: light gray (similar RAL 7035)

BC 161,6 DKL S KMGY - Housing cover

2202451

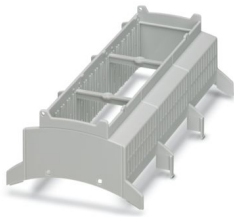
<https://www.phoenixcontact.com/in/products/2202451>



BC 161,6 OT 212121 KMGY - Upper housing part

2201869

<https://www.phoenixcontact.com/in/products/2201869>

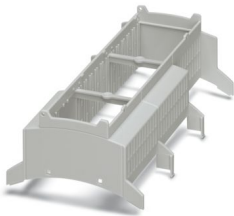


DIN rail housing for use in distribution boards in accordance with DIN 43880, modular upper housing part, width: 161.6 mm, height: 89.7 mm, depth: 54.85 mm, color: light gray (similar RAL 7035)

BC 161,6 OT 112122 KMGY - Upper housing part

2201881

<https://www.phoenixcontact.com/in/products/2201881>



DIN rail housing for use in distribution boards in accordance with DIN 43880, modular upper housing part, width: 161.6 mm, height: 89.7 mm, depth: 54.85 mm, color: light gray (similar RAL 7035)

BC 161,6 DKL S KMGY - Housing cover

2202451

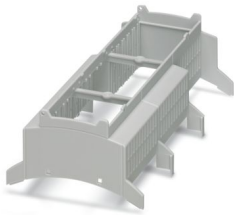
<https://www.phoenixcontact.com/in/products/2202451>



BC 161,6 OT 111122 KMGY - Upper housing part

2201919

<https://www.phoenixcontact.com/in/products/2201919>

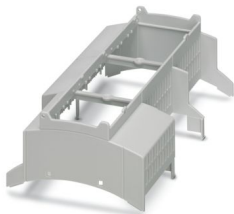


DIN rail housing for use in distribution boards in accordance with DIN 43880, modular upper housing part, width: 161.6 mm, height: 89.7 mm, depth: 54.85 mm, color: light gray (similar RAL 7035)

BC 161,6 OT 100202 KMGY - Upper housing part

2201976

<https://www.phoenixcontact.com/in/products/2201976>



DIN rail housing for use in distribution boards in accordance with DIN 43880, modular upper housing part, width: 161.6 mm, height: 89.7 mm, depth: 54.85 mm, color: light gray (similar RAL 7035)

BC 161,6 DKL S KMGY - Housing cover

2202451

<https://www.phoenixcontact.com/in/products/2202451>



BC 161,6 OT 111112 BK - Upper housing part

2201977

<https://www.phoenixcontact.com/in/products/2201977>

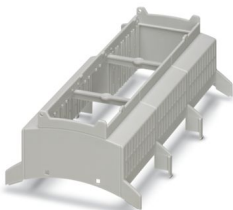


DIN rail housing for use in distribution boards in accordance with DIN 43880, modular upper housing part, width: 161.6 mm, height: 89.7 mm, depth: 54.85 mm, color: black (similar RAL 9005)

BC 161,6 OT 111121 KMGY - Upper housing part

2201982

<https://www.phoenixcontact.com/in/products/2201982>



DIN rail housing for use in distribution boards in accordance with DIN 43880, modular upper housing part, width: 161.6 mm, height: 89.7 mm, depth: 54.85 mm, color: light gray (similar RAL 7035)

BC 161,6 DKL S KMGY - Housing cover

2202451

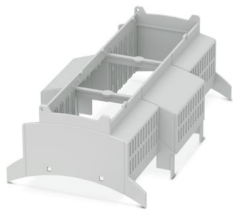
<https://www.phoenixcontact.com/in/products/2202451>



BC 161,6 OT 210021 KMGY - Upper housing part

2201984

<https://www.phoenixcontact.com/in/products/2201984>

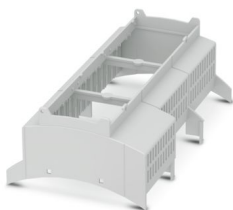


DIN rail housing for use in distribution boards in accordance with DIN 43880, modular upper housing part, width: 161.6 mm, height: 89.7 mm, depth: 54.85 mm, color: light gray (similar RAL 7035)

BC 161,6 OT 101111 KMGY MOQ100 - Upper housing part

2202201

<https://www.phoenixcontact.com/in/products/2202201>



DIN rail housing for use in distribution boards in accordance with DIN 43880, modular upper housing part, width: 161.6 mm, height: 89.7 mm, depth: 54.85 mm, color: light gray (similar RAL 7035)

BC 161,6 DKL S KMGY - Housing cover

2202451

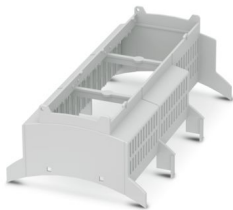
<https://www.phoenixcontact.com/in/products/2202451>



BC 161,6 OT 102222 KMGY MOQ100 - Upper housing part

2202202

<https://www.phoenixcontact.com/in/products/2202202>

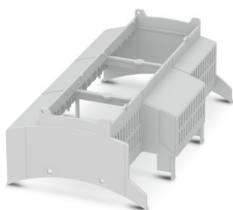


DIN rail housing for use in distribution boards in accordance with DIN 43880, modular upper housing part, width: 161.6 mm, height: 89.7 mm, depth: 54.85 mm, color: light gray (similar RAL 7035)

BC 161,6 OT 020001 KMGY MOQ100 - Upper housing part

2202224

<https://www.phoenixcontact.com/in/products/2202224>



DIN rail housing for use in distribution boards in accordance with DIN 43880, modular upper housing part, width: 161.6 mm, height: 89.7 mm, depth: 54.85 mm, color: light gray (similar RAL 7035)

BC 161,6 DKL S KMGY - Housing cover

2202451

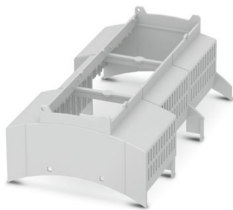
<https://www.phoenixcontact.com/in/products/2202451>



BC 161,6 OT 001101 KMGY - Upper housing part

2202284

<https://www.phoenixcontact.com/in/products/2202284>

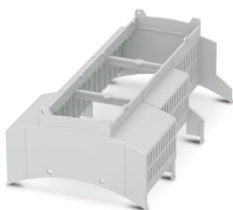


DIN rail housing for use in distribution boards in accordance with DIN 43880, modular upper housing part, width: 161.6 mm, height: 89.7 mm, depth: 54.85 mm, color: light gray (similar RAL 7035)

BC 161,6 OT 001112 KMGY MOQ100 - Upper housing part

2202287

<https://www.phoenixcontact.com/in/products/2202287>



DIN rail housing for use in distribution boards in accordance with DIN 43880, modular upper housing part, width: 161.6 mm, height: 89.7 mm, depth: 54.85 mm, color: light gray (similar RAL 7035)

BC 161,6 DKL S KMGY - Housing cover

2202451

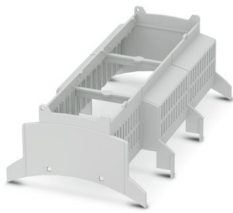
<https://www.phoenixcontact.com/in/products/2202451>



BC 161,6 OT 221111 KMGY MOQ100 - Upper housing part

2202300

<https://www.phoenixcontact.com/in/products/2202300>

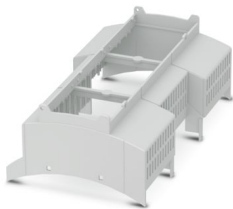


DIN rail housing for use in distribution boards in accordance with DIN 43880, modular upper housing part, width: 161.6 mm, height: 89.7 mm, depth: 54.85 mm, color: light gray (similar RAL 7035)

BC 161,6 OT 101100 KMGY VPE80 - Upper housing part

2202324

<https://www.phoenixcontact.com/in/products/2202324>



DIN rail housing for use in distribution boards in accordance with DIN 43880, modular upper housing part, width: 161.6 mm, height: 89.7 mm, depth: 54.85 mm, color: light gray (similar RAL 7035)

BC 161,6 DKL S KMGY - Housing cover

2202451

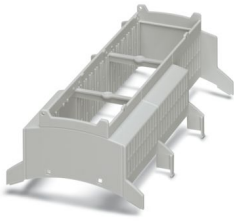
<https://www.phoenixcontact.com/in/products/2202451>



BC 161,6 OT 112122 KMGY MOQ100 - Upper housing part

2202326

<https://www.phoenixcontact.com/in/products/2202326>

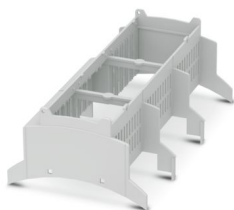


DIN rail housing for use in distribution boards in accordance with DIN 43880, modular upper housing part, width: 161.6 mm, height: 89.7 mm, depth: 54.85 mm, color: light gray (similar RAL 7035)

BC 161,6 OT 121222 KMGY MOQ100 - Upper housing part

2202355

<https://www.phoenixcontact.com/in/products/2202355>



DIN rail housing for use in distribution boards in accordance with DIN 43880, modular upper housing part, width: 161.6 mm, height: 89.7 mm, depth: 54.85 mm, color: light gray (similar RAL 7035)

BC 161,6 DKL S KMGY - Housing cover

2202451

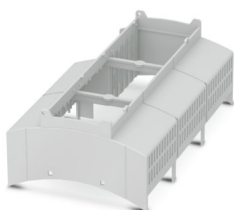
<https://www.phoenixcontact.com/in/products/2202451>



BC 161,6 OT 000C020 KMGYMOQ100 - Upper housing part

2202372

<https://www.phoenixcontact.com/in/products/2202372>

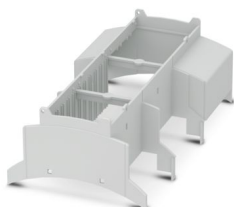


DIN rail housing for use in distribution boards in accordance with DIN 43880, modular upper housing part, width: 161.6 mm, height: 89.7 mm, depth: 54.85 mm, color: light gray (similar RAL 7035)

BC 161,6 OT 2C2C2C2C0C0C KMGY - Upper housing part

2202501

<https://www.phoenixcontact.com/in/products/2202501>



DIN rail housing for use in distribution boards in accordance with DIN 43880, modular upper housing part, width: 161.6 mm, height: 89.7 mm, depth: 54.85 mm, color: light gray (similar RAL 7035)

BC 161,6 DKL S KMGY - Housing cover

2202451

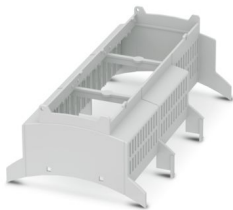
<https://www.phoenixcontact.com/in/products/2202451>



BC 161,6 OT 111112 KMGY - Upper housing part

2202638

<https://www.phoenixcontact.com/in/products/2202638>



DIN rail housing for use in distribution boards in accordance with DIN 43880, modular upper housing part, width: 161.6 mm, height: 89.7 mm, depth: 54.85 mm, color: light gray (similar RAL 7035)

BC 161,6 OT U11 BK - Upper housing part

2202833

<https://www.phoenixcontact.com/in/products/2202833>



DIN rail housing for use in distribution boards in accordance with DIN 43880, Upper housing part (U11) with vents, Installation depth connection technology: 11.1 mm, width: 161.6 mm, height: 89.7 mm, depth: 54.85 mm, color: black (similar RAL 9005)

BC 161,6 DKL S KMGY - Housing cover

2202451

<https://www.phoenixcontact.com/in/products/2202451>



BC 161,6 OT 000000 KMGY MOQ100 - Upper housing part

2202926

<https://www.phoenixcontact.com/in/products/2202926>

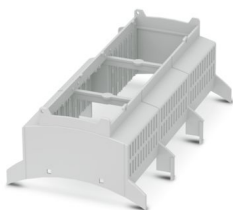


DIN rail housing for use in distribution boards in accordance with DIN 43880, modular upper housing part, width: 161.6 mm, height: 89.7 mm, depth: 54.85 mm, color: light gray (similar RAL 7035)

BC 161,6 OT 111101 KMGY - Upper housing part

2203095

<https://www.phoenixcontact.com/in/products/2203095>



DIN rail housing for use in distribution boards in accordance with DIN 43880, modular upper housing part, width: 161.6 mm, height: 89.7 mm, depth: 54.85 mm, color: light gray (similar RAL 7035)

BC 161,6 DKL S KMGY - Housing cover

2202451

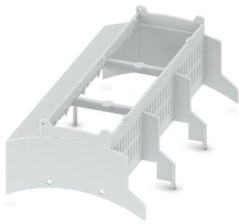
<https://www.phoenixcontact.com/in/products/2202451>



BC 161,6 OT 020202 KMGY - Upper housing part

2203502

<https://www.phoenixcontact.com/in/products/2203502>

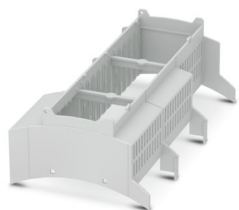


DIN rail housing for use in distribution boards in accordance with DIN 43880, modular upper housing part, width: 161.6 mm, height: 89.7 mm, depth: 54.85 mm, color: light gray (similar RAL 7035)

BC 161,6 OT 012122 KMGY - Upper housing part

2203722

<https://www.phoenixcontact.com/in/products/2203722>



DIN rail housing for use in distribution boards in accordance with DIN 43880, modular upper housing part, width: 161.6 mm, height: 89.7 mm, depth: 54.85 mm, color: light gray (similar RAL 7035)

BC 161,6 DKL S KMGY - Housing cover

2202451

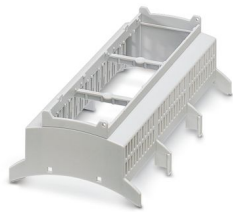
<https://www.phoenixcontact.com/in/products/2202451>



BC 161,6 OT U11 KMGY - Upper housing part

2278513

<https://www.phoenixcontact.com/in/products/2278513>



DIN rail housing for use in distribution boards in accordance with DIN 43880, Upper housing part (U11) with vents, Installation depth connection technology: 11.1 mm, width: 161.6 mm, height: 89.7 mm, depth: 54.85 mm, color: light gray (similar RAL 7035)

BC 161,6 OT U22 KMGY - Upper housing part

2278526

<https://www.phoenixcontact.com/in/products/2278526>



DIN rail housing for use in distribution boards in accordance with DIN 43880, Upper housing part (U22) with vents, Installation depth connection technology: 22.35 mm, width: 161.6 mm, height: 89.7 mm, depth: 54.85 mm, color: light gray (similar RAL 7035)

BC 161,6 DKL S KMGY - Housing cover

2202451

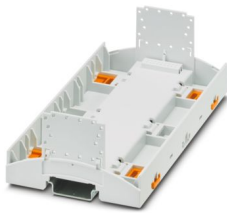
<https://www.phoenixcontact.com/in/products/2202451>



BC 161,6 UT HBUS KMGY - Mounting base housing

1227345

<https://www.phoenixcontact.com/in/products/1227345>



DIN rail housing for use in distribution boards in accordance with DIN 43880, Lower housing part with base latch, width: 161.6 mm, height: 89.7 mm, depth: 48.9 mm, color: light gray (similar RAL 7035), cross connection: DIN rail connector (optional), number of positions cross connector: 16

BC 161,6 UT HBUS BK - Mounting base housing

2278500

<https://www.phoenixcontact.com/in/products/2278500>



DIN rail housing for use in distribution boards in accordance with DIN 43880, Lower housing part with base latch, width: 161.6 mm, height: 89.7 mm, depth: 48.9 mm, color: black (similar RAL 9005), cross connection: DIN rail connector (optional), number of positions cross connector: 16

BC 161,6 DKL S KMGY - Housing cover

2202451

<https://www.phoenixcontact.com/in/products/2202451>



BC 161,6 UT HBUS GY7021 - Mounting base housing

1560324

<https://www.phoenixcontact.com/in/products/1560324>



DIN rail housing for use in distribution boards in accordance with DIN 43880, Lower housing part with base latch, width: 161.6 mm, height: 89.7 mm, depth: 48.9 mm, color: black gray (similar RAL 7021), cross connection: DIN rail connector (optional), number of positions cross connector: 16

BC 161,6 UT HBUS FS BK VPE80 - Mounting base housing

2200072

<https://www.phoenixcontact.com/in/products/2200072>



DIN rail housing for use in distribution boards in accordance with DIN 43880, Lower housing part with base latch, width: 161.6 mm, height: 89.7 mm, depth: 48.9 mm, color: black (similar RAL 9005), cross connection: DIN rail connector (optional), number of positions cross connector: 16

BC 161,6 DKL S KMGY - Housing cover

2202451

<https://www.phoenixcontact.com/in/products/2202451>



HBUS8 161,6-8P-1S BK - DIN rail bus connectors

1249066

<https://www.phoenixcontact.com/in/products/1249066>



DIN rail connector, color: black, nominal current: 3 A (per contact), rated voltage (III/2): 100 V, number of positions: 8, product range: BC 161,6..., pitch: 2.54 mm, mounting: DIN rail mounting, locking: without

HBUS 161,6-16P-1S BK - DIN rail bus connectors

2278555

<https://www.phoenixcontact.com/in/products/2278555>



DIN rail connector, color: black, nominal current: 3 A (Total current of 25 A max.), rated voltage (III/2): 30 V, number of positions: 16, product range: BC 161,6..., pitch: 2.54 mm, mounting: DIN rail mounting, locking: without

BC 161,6 DKL S KMGY - Housing cover

2202451

<https://www.phoenixcontact.com/in/products/2202451>



HBUS8-B SET BK - Protective cap

1252176

<https://www.phoenixcontact.com/in/products/1252176>



Set of 3 caps, for protecting unused DIN rail bus connectors, simply snap on to fit

HBUS-B SET BK - Protective cap

2278173

<https://www.phoenixcontact.com/in/products/2278173>



Set of 3 caps, for protecting unused DIN rail bus connectors, simply snap on to fit

BC 161,6 DKL S KMGY - Housing cover



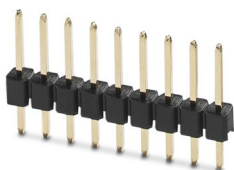
2202451

<https://www.phoenixcontact.com/in/products/2202451>

PSTD 0,65X0,65/9-1-2,54 - Pin strip

1252180

<https://www.phoenixcontact.com/in/products/1252180>



Pin strip, color: black, nominal current: 3 A (per contact), rated voltage (III/2): 100 V, contact connection type: Pin, number of potentials: 9, number of rows: 1, number of positions: 9, number of connections: 9, product range: PSTD 0,65X0,65/...-1-V, pitch: 2.54 mm, mounting: THR soldering, pin layout: Linear pinning, solder pin [P]: 6.3 mm, locking: without, type of packaging: packed in cardboard

PSTD 0,65X0,65/9-2,54 - Pin strip

2200700

<https://www.phoenixcontact.com/in/products/2200700>



Pin strip, color: black, contact connection type: Pin, number of potentials: 18, number of rows: 2, number of positions: 18, number of connections: 18, product range: PSTD 0,65X0,65/...-V, pitch: 2.54 mm, mounting: THR soldering, pin layout: Linear pinning, solder pin [P]: 2.5 mm, locking: without, type of packaging: packed in cardboard

BC 161,6 DKL S KMGY - Housing cover



2202451

<https://www.phoenixcontact.com/in/products/2202451>

PSTD 0,65X0,65/9-3IS-2,54 - Pin strip

1252178

<https://www.phoenixcontact.com/in/products/1252178>



Pin strip, color: black, nominal current: 3 A (per contact), rated voltage (III/2): 100 V, contact connection type: Pin, number of potentials: 9, number of rows: 1, number of positions: 9, number of connections: 9, pitch: 2.54 mm, mounting: THR soldering, pin layout: Linear pinning, solder pin [P]: 2.5 mm, locking: without, type of packaging: packed in cardboard

PSTD 0,65X0,65/18-3IS-2,54 - Pin strip

2202993

<https://www.phoenixcontact.com/in/products/2202993>



Pin strip for connecting an additional PCB or PCB with hole pattern to the HBUS

BC 161,6 DKL S KMGY - Housing cover

2202451

<https://www.phoenixcontact.com/in/products/2202451>



FUSSRIEGEL 14,4 L30 SPERR OG - Base latch

2896998

<https://www.phoenixcontact.com/in/products/2896998>



DIN rail housing for use in distribution boards in accordance with DIN 43880, Base latch, width: 14.4 mm, height: 29.8 mm, depth: 5.9 mm, color: orange (similar RAL 2003)

KP BC K4 C2 P5 - Membrane keypad

1337341

<https://www.phoenixcontact.com/in/products/1337341>



Membrane keypad for BC 107,6 and BC 161,6, self-adhesive, conductive silver technology, 4 keys, 2 colors, 7-pos. terminal lug, pitch: 1.0 mm, customizable in the online configurator

BC 161,6 DKL S KMGY - Housing cover

2202451

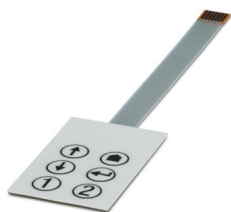
<https://www.phoenixcontact.com/in/products/2202451>



KP BC K6 C2 P7 - Membrane keypad

1337344

<https://www.phoenixcontact.com/in/products/1337344>



Membrane keypad for BC 107,6 and BC 161,6, self-adhesive, conductive silver technology, 6 keys, 2 colors, 7-pos. terminal lug, pitch: 1.0 mm, customizable in the online configurator

BC 161,6 PLATE KMGY - Insertion plate

1150589

<https://www.phoenixcontact.com/in/products/1150589>



DIN rail housing for use in distribution boards in accordance with DIN 43880, Insertion plate, width: 158.3 mm, height: 41.75 mm, depth: 1.5 mm, color: light gray (similar RAL 7035)

Accessories

BC 161,6 DKL S KMGY - Housing cover



2202451

<https://www.phoenixcontact.com/in/products/2202451>

HS LC-V-D3/ R2XC1-5,08 - Fiber optic

2202311

<https://www.phoenixcontact.com/in/products/2202311>



Multiple light guides, passive, rigid, Cylinder head, emission surface: planar, number of displays: 2, (2 rows, 1 column), pitch: 5.08 mm, ESD protection: <12 kV, can be used for the BC housing range (housing must be processed)

HS LC-V-D3/ R3XC1-5,08 - Fiber optic

2202312

<https://www.phoenixcontact.com/in/products/2202312>



Multiple light guides, passive, rigid, Cylinder head, emission surface: planar, number of displays: 3, (3 rows, 1 column), pitch: 5.08 mm, ESD protection: <12 kV, can be used for the BC housing range (housing must be processed)

Phoenix Contact 2025 © - all rights reserved

<https://www.phoenixcontact.com>

PHOENIX CONTACT (I) Pvt. Ltd.

A-58/2, Okhla Industrial Area, Phase - II, New Delhi-110 020

+91.1275.71420

info@phoenixcontact.co.in