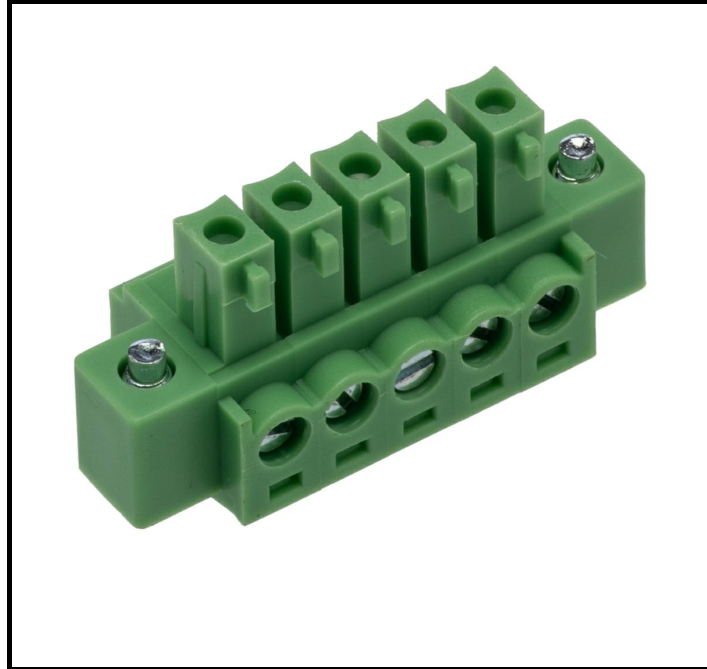


FEATURES

- **Board-to-Board and Board-to-Wire Compatibility:** Offers flexibility in design and application.
- **Male Contact Gender:** Ensures secure and stable connections.
- **Phosphor Bronze Contacts:** Provides excellent conductivity and durability.
- **Nickel and Zinc Plating:** Enhances corrosion resistance and longevity.
- **8 A Current Rating:** Suitable for medium power applications.
- **PA66 Housing Material:** Offers high mechanical strength and thermal stability.
- **Wide Operating Temperature Range:** Functions effectively from -40 °C to 105 °C.
- **Through Hole Mount Type:** Facilitates easy installation and secure mounting.
- **3.81 mm Pitch:** Ensures compact design and efficient use of space.

RS PRO 5-Pin Shrouded PCB Header, 8 A Current Rating

RS Stock No: 631-123



RS Professionally Approved Products bring to you professional quality parts across all product categories. Our product range has been tested by engineers and provides a comparable quality to the leading brands without paying a premium price.

Product Description

This RS PRO PCB Header is designed for reliable electrical connections in various industrial applications. With a robust construction, it supports both board-to-board and board-to-wire systems, ensuring versatility and ease of integration. The shrouded design enhances safety and connection integrity.

General Specifications

Connector System	Board-to-Board, Board-to-Wire
Contact Gender	Male
Contact Material	Phosphor Bronze
Contact Plating	Nickel, Zinc
Mount Type	Through Hole
Number of Contacts	5
Number of Rows	1
Orientation	Straight
Product Type	PCB Header
Shrouded/Unshrouded	Shrouded

Electrical Specifications

Current	8 A
Voltage	300 V

Mechanical Specifications

Housing Material	PA66
Pitch	3.81 mm
Termination Type	Screw

Operation Environment Specifications

Maximum Operating Temperature	105 °C
Minimum Operating Temperature	-40 °C

Approvals

Standards/Approvals	ANSI-ESD S20.20:2021, CE, REACH, RoHS, UL
---------------------	---

