

“S” SERIES HANDLE

Technical Information



SURE GRIP[™]
CONTROLS INC.

1949 Keating Cross Road, Saanichton, British Columbia, Canada V8M 2A4
Phone: 250-544-2207 Fax: 250-544-2279 www.suregripcontrols.com

"S" Series Handle Technical Information

1949 Keating Cross Road
Victoria, B.C. Canada V8M 2A4
Phone: (250) 544-2207

Fax: (250) 544-2279
Toll Free: 1-800-831-2278
www.suregripcontrols.com

SURE GRIP
CONTROLS INC.

"S" Series Handle

The "S" Series Control Grip is the **LOW COST** little brother to the "C" and "L" Series that is designed for simple applications that only require several switches.

The cases are molded using a tough **High Impact ABS** polymer into a comfortable compact shape for a rugged yet light weight control grip for **extreme duty applications**.

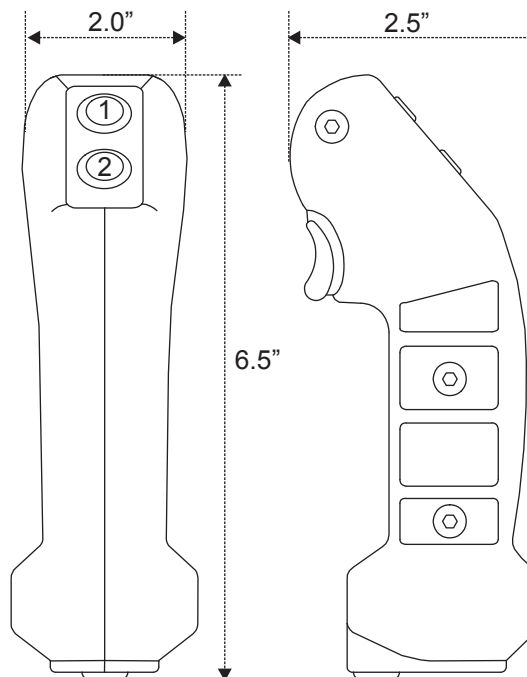
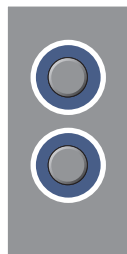
These grips features a switch activation force of only 300 grams and come with a single trigger and 1 or 2 thumb switches. They can also be customized with toggle switches and custom graphics on the faceplate overlay (consult factory).

"S" Handle Faceplate Options

1 Switches



2 Switches

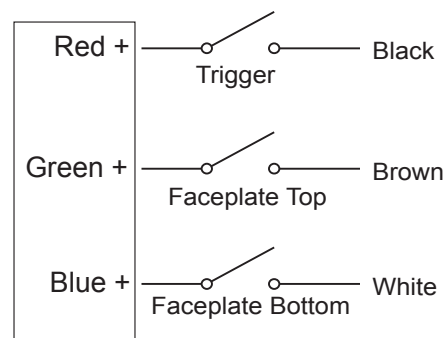


"S" Handle Specifications

Dimensions:	6.5" high x 1.75" wide
Configuration Options:	Custom configurable - refer to page 5 for available options. Call factory for further configurations
Weight:	350 grams (8 oz.)
Overlay:	embossed .007" polyester
Case:	1/8" thick, heavy wall ABS, available in grey or black
Mounting Pin:	1" diameter, 6061 aluminum
Wire:	standard 2' @ 22 gauge
Switch Current Rating:	5 amps
Switch Life:	10 million mechanical 2.5 million @ 500 mA DC (typical)

"S" Handle Typical Wiring

Doc. #420.0081 Rev. 09/12/05



Note:
These wires must be hooked to positive voltage, if a diode pack is installed on wire harness

"S" Series Handle

Technical Information

1949 Keating Cross Road
Victoria, B.C. Canada V8M 2A4
Phone: (250) 544-2207

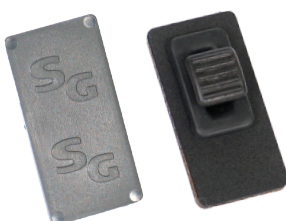
Fax: (250) 544-2279
Toll Free: 1-800-831-2278
www.suregripcontrols.com

SURE GRIP™
CONTROLS INC.

"S" Series Stock Handle Part Number

S1-M2-02

- + Single trigger
- + 2 button momentary
- + 2 feet wire
- + Grey cases



- ❶ Blank Faceplate
- ❷ Slider Module Faceplate
- ❸ S Handles with 1 and 2 Button Faceplates

Refer to the Customized Handle Guide (Doc. #420.0032) for complete ordering details.

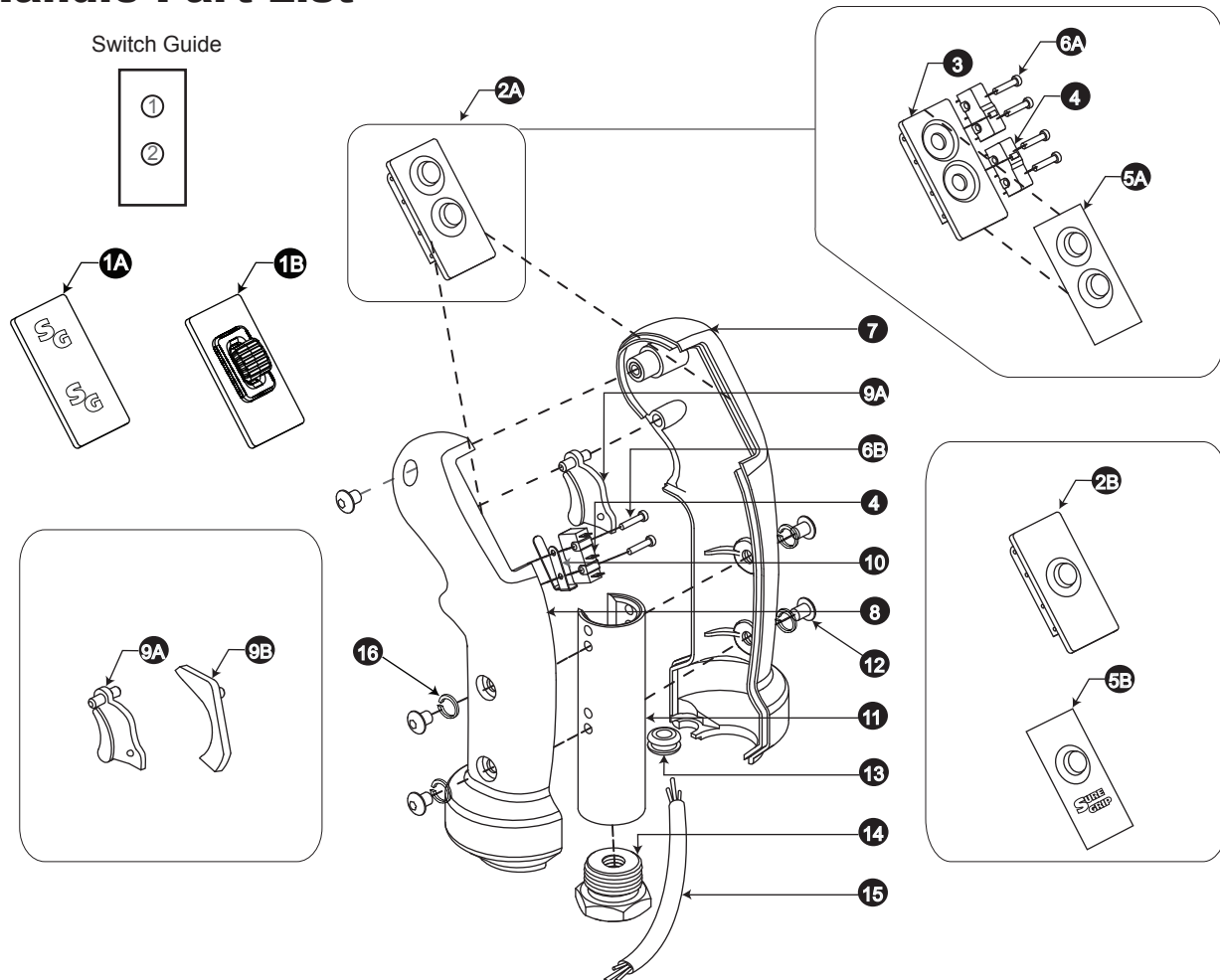
"S" Series Handle Technical Information

1949 Keating Cross Road
Victoria, B.C. Canada V8M 2A4
Phone: (250) 544-2207

Fax: (250) 544-2279
Toll Free: 1-800-831-2278
www.suregripcontrols.com

SURE GRIP™
CONTROLS INC.

"S" Handle Part List



FLG	PART#	DESCRIPTION	FLG	PART#	DESCRIPTION
1A	S-FP-00	"S" Blank Faceplate	14	BU-00	Adapter Bushing - 1/4" Hole (See Page 15)
1B	S-FP-E	"S" Series Single Slider Module (Call Factory)	15	S1-M2-W	"S" Handle Wire Harness
2A	S-FP-A2	"S" 2 Function Switch Pack Assy.	16	SC-20	10-32 Lockwasher
2B	S-FP-A1	"S" 1 Function Switch Pack Assy.			
3	S-FP-01	"S" Empty Faceplate			
4	SW-00	Handle Switch, L/S			
5A	S-ME-A2	"S" Series 2 Button Overlay			
5B	S-ME-A1	"S" Series 1 Button Overlay			
6A	SC-03	2 x 7/16" Tapping Screw - Pan Head (Faceplate)			
6B	SC-21	2 x 9/16" Tapping Screw - Pan Head (Trigger)			
7	S-HL-02-G	"S" Series Handle Case Right - Grey (Black)			
8	S-HL-01-G	"S" Series Handle Case Left - Grey (Black)			
9A	S-TR-01	"S" Series Single Trigger			
9B	S-TR-00	"S" Trigger Insert			
10	LS-00	Leaf Spring for Trigger			
11	PN-03	Mounting Pin "L/S"			
12	SC-02SS	10-32 x 7/16" Capscrew - Button Head			
13	GR-01	3/8" x 1/4" Grommet			