

As of 2011-11-20


 CIRCUIT-BREAKER, 90 A, N-RELEASE 1170 A, SIZE S3,
STARTER PROTECTION, 100 KA, SCREW CONNECTION
INCREASED BREAKING CAPACITY

General technical data:		
Product brand name		SIRIUS
product designation		circuit breaker
Size of the circuit-breaker		S3
Degree of pollution		3
Installation altitude / at a height over sea level / maximum	m	2,000
Protection class IP / on the front		IP20
Ambient temperature		
• during storage	°C	-50...80
• during operating	°C	-20...70
• during transport	°C	80...-50
Resistance against shock		25g / 11 ms
Insulation voltage / rated value	V	690
Impulse voltage resistance / rated value	V	6,000
Active power loss / total / typical	W	30
Item designation		
• according to DIN 40719 extendable after IEC 204-2 / according to IEC 750		Q
• according to DIN EN 61346-2		Q
Mechanical operating cycles as operating time / of the main contacts / typical		50,000
Type of the driving mechanism / motor drive		No
Design of the operating mechanism		selector switch
Product function		
• overload protection		No

<ul style="list-style-type: none"> • phase disturbance recognition 	No
Product component	
<ul style="list-style-type: none"> • auxiliary switch • undervoltage release mechanism • trip indicator 	No
Product extension / optional / motor drive	Yes

Main circuit:

Number of poles / for main current circuit	3
type of voltage	AC/DC
Operating voltage / at AC-3 / rated value / maximum	V 690
Operating current / at AC-3 / at 400 V / rated value	A 90
Service power / at AC-3	
<ul style="list-style-type: none"> • at 400 V / rated value 	kW 45
Frequency of operation / at AC-3 / according to IEC 60947-6-2 / maximum	1/h 15
Arrangement of electrical connectors / for main current circuit	front side
Adjustable response current	
<ul style="list-style-type: none"> • of the non-delayed short-circuit release 	A 1,170...1,170
Continuous current / rated value	A 90
Product extension / auxiliary switch	Yes

Auxiliary circuit:

Number of NC contacts / for auxiliary contacts / instantaneous switching	0
Number of NO contacts / for auxiliary contacts / instantaneous switching	0
Number of change-over switches / for auxiliary contacts	0

Inputs/ Outputs:

Number of digital inputs	0
---------------------------------	---

Short-circuit:

Breaking capacity limit short-circuit current (Icu)	
<ul style="list-style-type: none"> • at 400 V / rated value • at 500 V / rated value • at 690 V / rated value 	kA 100 kA 10 kA 6
Design of the electrical connection / for auxiliary and control current circuit	screw-type terminals
Design of the overcurrent release and short-circuit release	magnetic

Installation/mounting/dimensions:

Built in orientation	any
Type of mounting	screw and snap-on mounting onto 35 mm standard mounting rail according to DIN EN 50022
Width	mm 70
Height	mm 165
Depth	mm 174
Distance, to be maintained, to the ranks assembly	
<ul style="list-style-type: none"> • backwards • sideways 	mm 0 mm 0
Product function / removable terminal for auxiliary and control circuit	No

Connections:

Design of the electrical connection	
<ul style="list-style-type: none"> • for main current circuit 	screw-type terminals with box terminals
Type of the connectable conductor cross-section	
<ul style="list-style-type: none"> • for main contacts 	

- solid
- stranded
- finely stranded
- with conductor end processing

Conductor cross section that can be connected / for main contacts

- solid
- stranded
- stranded wire
- with conductor end processing

2x (2.5 ... 16 mm²)
 2x (10 ... 50 mm²), 10 ... 70 mm²
 2x (2.5 ... 35 mm²), 2.5 ... 50 mm²

mm² 2.5...16
 mm² 10...70
 mm² 2.5...50

Certificates/approvals:

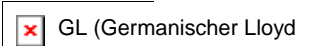
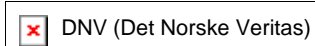
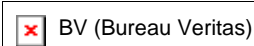
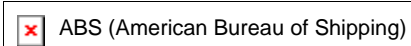
General Product Approval



KETI

ROSTEST

Shipping Approval



Safety:

Protection against electrical shock

finger-safe

Further information:

Information- and Downloadcenter (Catalogs, Brochures,...)

<http://www.siemens.com/industrial-controls/catalogs>

Industry Mall (Online ordering system)

<http://www.siemens.com/industrial-controls/mall>

CAX-Online-Generator

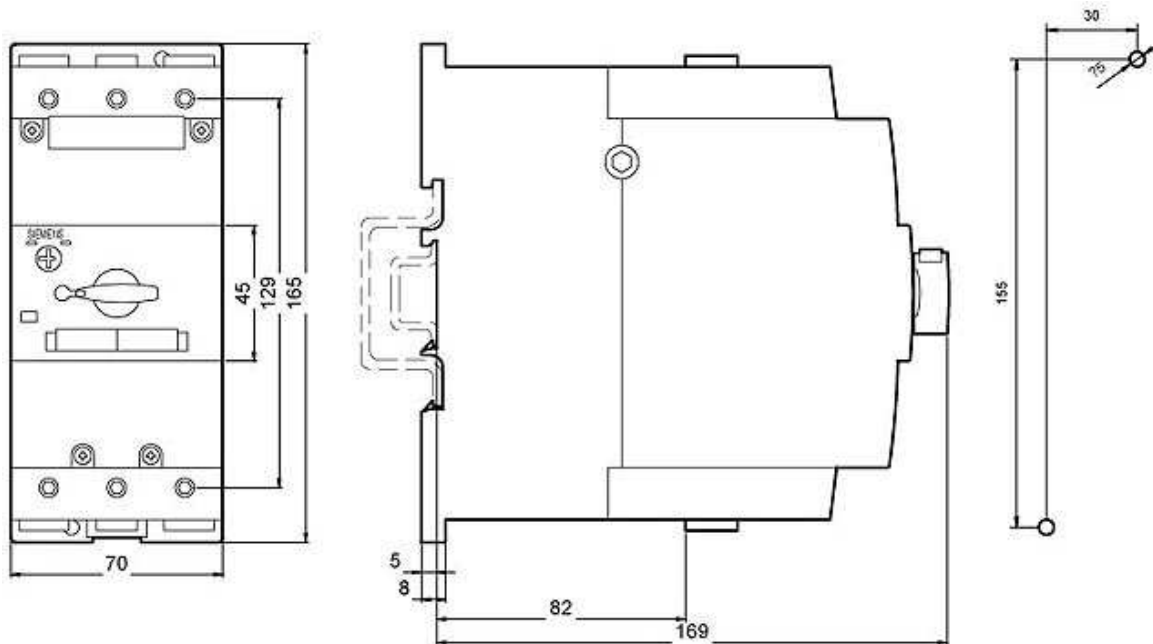
<http://www.siemens.com/cax>

Service&Support (Manuals, Certificates, Characteristics, FAQs,...)

<http://support.automation.siemens.com/WW/view/en/3RV1342-4LC10/all>

Image database (product images, 2D dimension drawings, 3D models, device circuit diagrams, ...)

http://www.automation.siemens.com/bilddb/cax_en.aspx?mlfb=3RV1342-4LC10



last change:

Oct 24, 2011