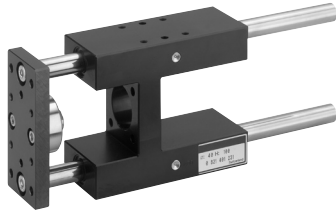


Cylinder accessories → Guide units, series CG1

**Guide unit, GH1**

► Ø 32 - 100 mm ► Plain bearing ► for standard cylinder ISO 1552



00105863

Ambient temperature min./max.

-20 °C / 80 °C

Materials:

Bearing housings

Aluminum, black anodized

Bearing type

Sintered bronze

Carrying plate

Aluminum, black anodized

Flexible coupling in carrying plate

Stainless steel

Guide rods

Stainless steel, smooth rolled

Suitable piston Ø		[mm]	32	40	50	63	80
		Weight	0 mm stroke	[kg]	1.3	2.3	3.7
	10 mm stroke	[kg]	0.009	0.016	0.025	0.025	0.039

Suitable piston Ø		[mm]	100				
		Weight	0 mm stroke	[kg]	11.1		
	10 mm stroke	[kg]	0.039				

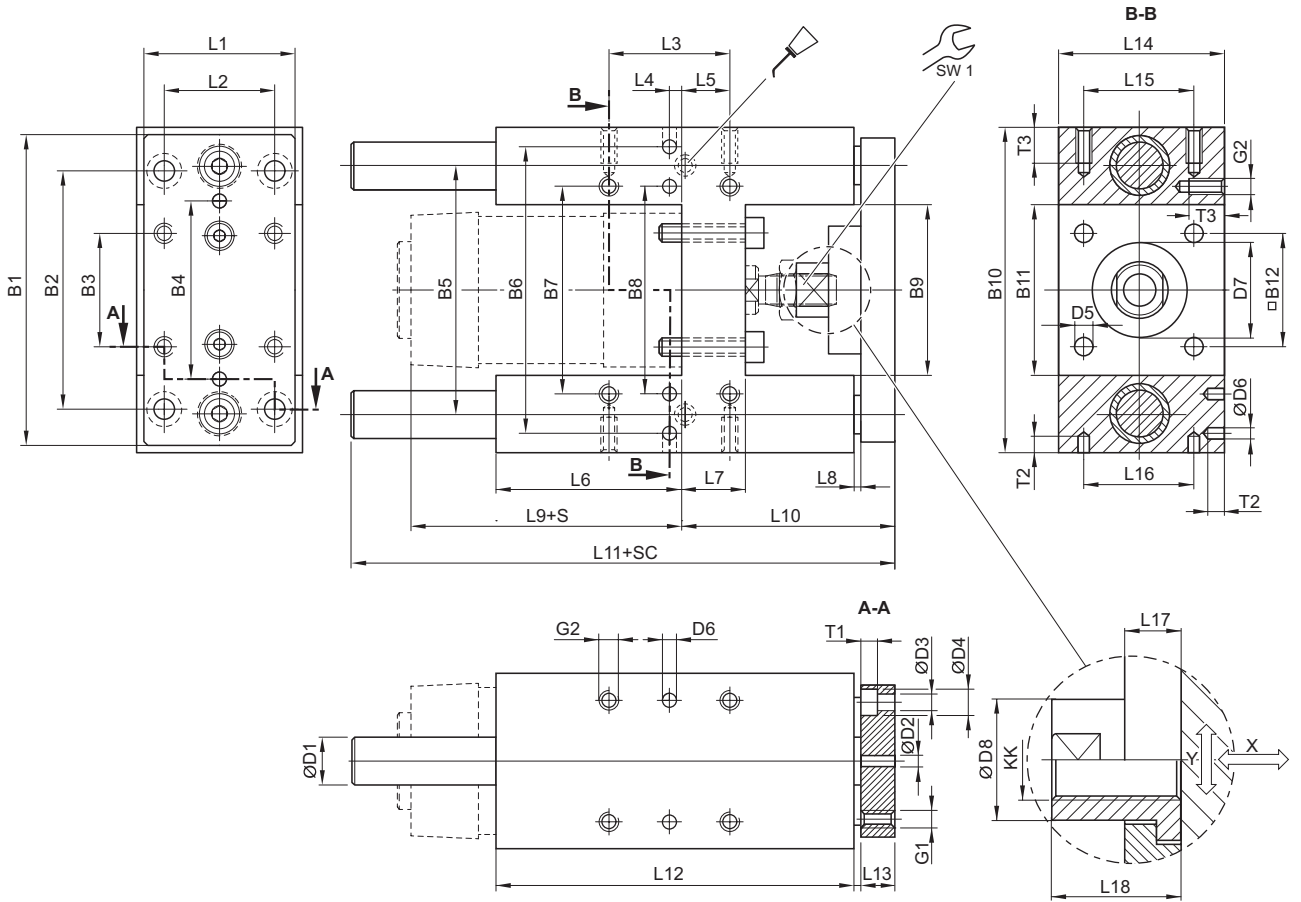
	Suitable piston Ø [mm]	32	40	50	63	80
	Min. play (radial) [mm]	1.5	2	2	2	2
Stroke	50	<b>0821401220</b>	<b>0821401230</b>	<b>0821401240</b>	<b>0821401280</b>	-
	100	<b>0821401221</b>	<b>0821401231</b>	<b>0821401241</b>	<b>0821401281</b>	<b>0821401260</b>
	160	<b>0821401222</b>	<b>0821401232</b>	<b>0821401242</b>	<b>0821401285</b>	-
	200	<b>0821401223</b>	<b>0821401233</b>	<b>0821401243</b>	<b>0821401282</b>	<b>0821401261</b>
	250	<b>0821401224</b>	<b>0821401234</b>	<b>0821401244</b>	0821401286	-
	320	<b>0821401225</b>	<b>0821401235</b>	<b>0821401245</b>	<b>0821401283</b>	<b>0821401262</b>
	400	<b>0821401226</b>	<b>0821401236</b>	<b>0821401246</b>	<b>0821401287</b>	-
	500	<b>0821401227</b>	<b>0821401237</b>	<b>0821401247</b>	0821401284	<b>0821401263</b>
	600	0821401228	0821401238	<b>0821401249</b>	0821401288	0821401264
	800	0821401229	0821401239	<b>0821401474</b>	0821401289	0821401265
	1000	0821401470	0821401472	0821401475	0821401290	0821401266
	1200	0821401471	0821401473	0821401476	0821401291	0821401267
		Suitable piston Ø [mm]	100			
	Min. play (radial) [mm]	2				
Stroke	50	-				
	100	<b>0821401270</b>				
	160	-				
	200	<b>0821401271</b>				
	250	-				
	320	0821401272				
	400	-				
	500	<b>0821401273</b>				
	600	0821401274				
	800	0821401275				
	1000	0821401276				
1200	0821401277					

Cylinder accessories → Guide units, series CG1

**Guide unit, GH1**

► Ø 32 - 100 mm ► Plain bearing ► for standard cylinder ISO 15552

Ø 32 - 100 mm



00127787

S = stroke  
 SC = cylinder stroke  
 X = max. play (axial)  
 Y = min. play (radial)

Piston Ø	B1	B2	B3	B4	B5	B6	B7	B8	B9	B10	B11
32	90	78	32.5	50 ±0,02	74	81 ±0,02	61	61 ±0,02	50.2	97	50.2
40	110	84	38	54 ±0,02	87	99 ±0,02	69	69 ±0,02	58.2	115	58.2
50	130	100	46.5	72 ±0,02	104	119 ±0,02	85	85 ±0,02	70.2	137	70.2
63	145	105	56.5	82 ±0,02	119	132 ±0,02	100	100 ±0,02	85.2	152	85.2
80	180	130	72	106 ±0,02	148	166 ±0,02	130	130 ±0,02	105.4	189	105.4
100	200	150	89	131 ±0,02	172	190 ±0,02	150	150 ±0,02	130.4	213	130.4

Piston Ø	B12	D1	D2	D3	D4	D5	D6	D7	D8	G1	G2	KK	L1
32	32.5	12	6 H7	6.6	11	6.6	6 H7	30 M8	14.5	M6	M6	M10x1,25	45
40	38	16	6 H7	6.6	11	6.6	6 H7	35 M8	18	M6	M6	M12x1,25	54
50	46.5	20	6 H7	9	15	9	6 H7	40 M8	24	M8	M8	M16x1,5	63
63	56.5	20	6 H7	9	15	9	6 H7	45 M8	24	M8	M8	M16x1,5	80
80	72	25	6 H7	11	18	11	6 H7	45 M8	30	M10	M10	M20x1,5	100
100	89	25	6 H7	11	18	11	6 H7	55 M8	30	M10	M10	M20x1,5	120

Piston Ø	L2	L3	L4	L5	L6	L7	L8	L9	L10	L11	L12	L13	L14
32	32.5	32.5	12	4.25	76	17	3	94	64	177.5	125	12	50

Part numbers marked in bold are available from the central warehouse in Germany, see the shopping basket for detailed information  
 Pneumatics catalog, online PDF, as of 2010-01-20, © Bosch Rexroth AG, subject to change

Cylinder accessories → Guide units, series CG1

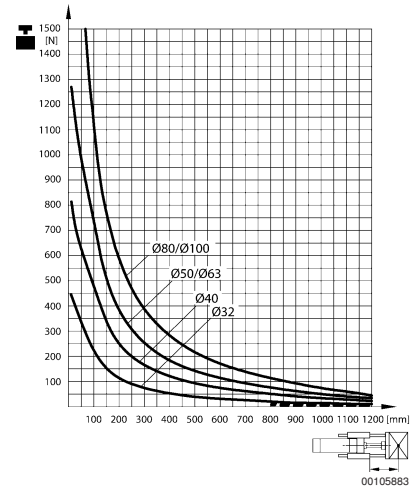
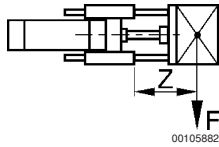
**Guide unit, GH1**

► Ø 32 - 100 mm ► Plain bearing ► for standard cylinder ISO 1552

Piston Ø	L2	L3	L4	L5	L6	L7	L8	L9	L10	L11	L12	L13	L14
40	38	38	8	11	81	21	3	105	74	192.5	140	12	58
50	46.5	46.5	4.5	18.75	79	26	3	106	89	205	150	15	70
63	56.5	56.5	13	15.25	111	26	3	121	89	237	182	15	85
80	72	72	15	21	128	34	3	128	110	280	215	20	105
100	89	89	20	24.5	128	39	3	138	115	280	220	20	130

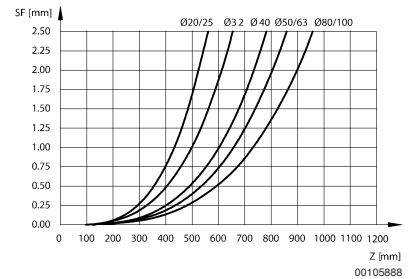
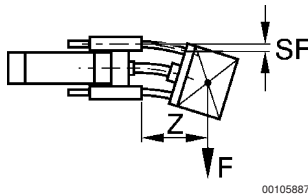
Piston Ø	L15	L16	L17	L18	T1	T2	T3	SW1					
32	32.5	32,5 ±0,02	6	17	6.5	10	15	13					
40	38	38 ±0,02	14	22	6.5	10	15	15					
50	46.5	46,5 ±0,02	14	26	9	10	16	22					
63	56.5	56,5 ±0,02	14	26	9	10	16	22					
80	72	72 ±0,02	14	32	11	10	20	27					
100	89	89 ±0,02	14	32	11	10	20	27					

**Useful load**



F = Useful load, Z = Projection

**Bending due to own load**

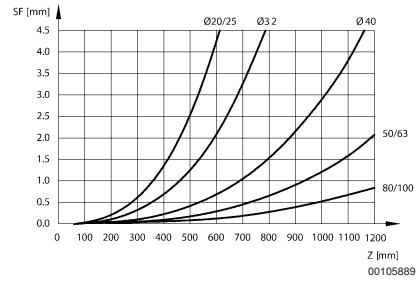
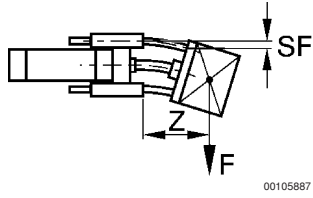


F = useful load (at the load center), SF = bending, Z = projection

## Cylinder accessories → Guide units, series CG1

**Guide unit, GH1**

▶ Ø 32 - 100 mm ▶ Plain bearing ▶ for standard cylinder ISO 15552

**Bending due to 10 N load**

F = useful load (at the load center), SF = bending, Z = projection