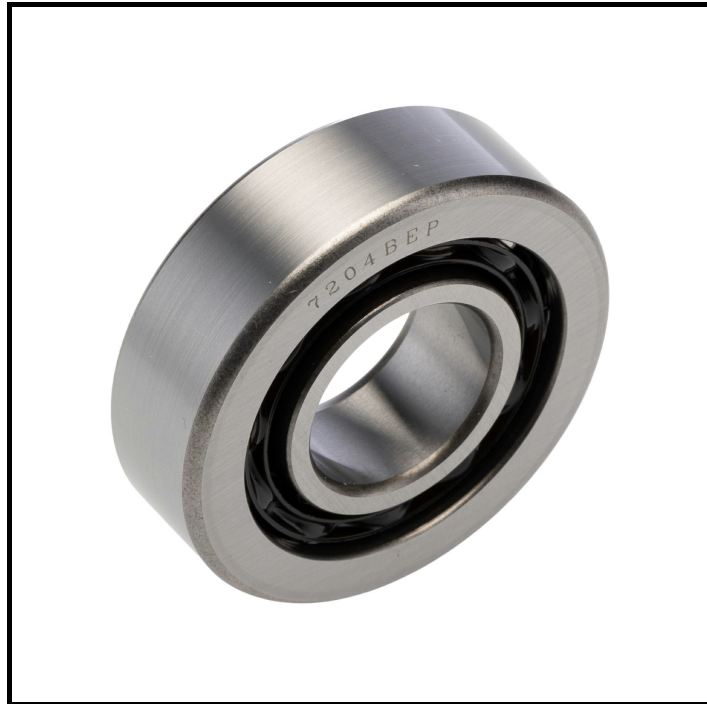


## FEATURES

- **Steel Ball Material:** Ensures durability and resistance to wear, extending the lifespan of the bearing
- **Single Row Angular Contact Design:** Provides excellent support for combined loads, enhancing operational reliability
- **Polymer Cage Material:** Reduces friction and noise, contributing to smoother operation
- **40° Contact Angle:** Optimises load-carrying capacity, improving performance under axial loads
- **Dynamic Load Rating of 13.3 kN:** Supports high dynamic loads, suitable for demanding applications
- **Open End Type:** Allows for easy maintenance and lubrication, increasing service life
- **Limiting Speed of 18000 rpm:** Capable of high-speed operation, ideal for fast-moving machinery

## RS PRO 20mm Single Row Angular Contact Ball Bearing

RS Stock No: 291-626



RS Professionally Approved Products bring to you professional quality parts across all product categories. Our product range has been tested by engineers and provides a comparable quality to the leading brands without paying a premium price

## Product Description

This RS PRO ball bearing is designed for high-performance applications requiring precise handling of radial and axial loads. With a 20 mm inside diameter, it is ideal for machinery where space is limited but efficiency is crucial.

## General Specifications

Ball Material	Steel
Bearing Type	Single Row Angular Contact Ball
Bore Type	Parallel
Cage Material	Polymer
Contact Angle	40 °
Dynamic Load Rating	13.3 kN
End Type	Open
Internal Clearance	CN
Limiting Speed	18000 rpm
Number of Rows	1
Product Type	Ball Bearing
Race Material	Steel
Race Type	Plain
Race Width	14 mm
Static Load Rating	7.65 kN

## Mechanical Specifications

Inside Diameter	20 mm
Outside Diameter	47 mm

## Approvals

Standards/Approvals	ANSI-ESD S20.20:2021
---------------------	----------------------

