



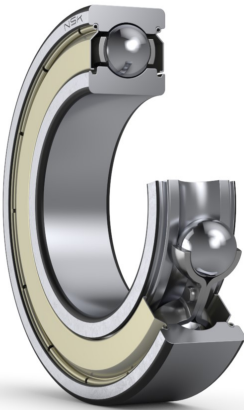
PRODUCT DATASHEET

Datasheet creation date: 2025/07/08 2:17 (UTC)



6008ZZ

Single-Row Deep Groove Ball Bearings



Boundary Dimensions

d	40	mm	Bore diameter
D	68	mm	Outside diameter
B	15	mm	Width
r (min.)	1	mm	Chamfer dimension

Basic Load Ratings

Cr	18400	N	Basic dynamic load rating
C0r	11500	N	Basic static load rating

Speeds

Grease	12000	min-1	Grease lubrication
--------	-------	-------	--------------------

Abutment and Fillet Dimensions

da (min.)	45	mm	Diameter of shaft abutment
da (max.)	47.5	mm	Diameter of shaft abutment
Da (max.)	63	mm	Diameter of housing abutment
ra (max.)	1	mm	Radius of shaft or housing fillet

Calculation factors

fo	15.3		Factor
----	------	--	--------

Additional information

z	12		Number of Balls
Dw	7.938	mm	Ball Diameter

Mass

Mass approx.	0.19	kg	Mass approx.
--------------	------	----	--------------

