

**1.0 ELECTRICAL**

1.1 FREQUENCY RANGE: DC-200 MHz

**2.0 MATERIALS**

2.1 BODIES: BRASS PER JIS-C3604

2.2 CENTER CONTACT: BRASS PER JIS-C3604

**3.0 FINISHES AND OTHERS**

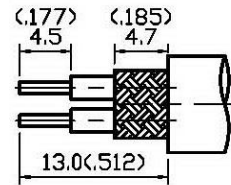
3.1 SEE BELOW TABLE FOR DETAILS.

**4.0 MECHANICAL**

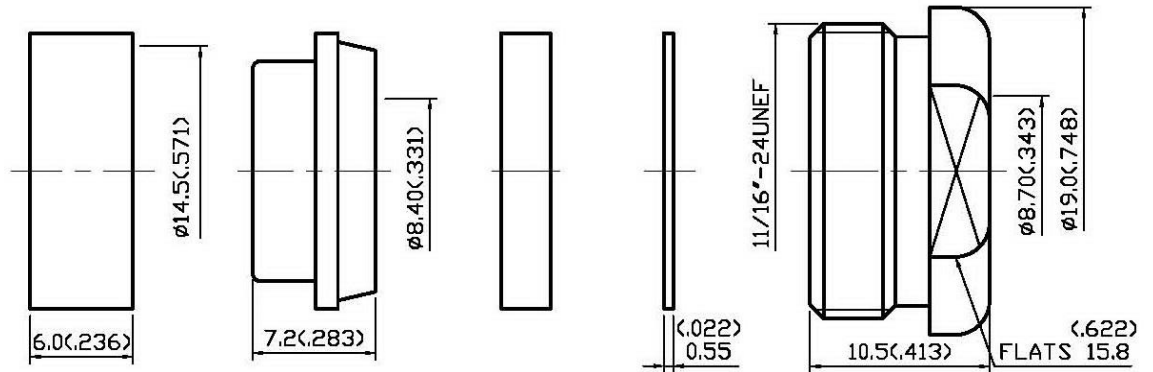
4.1 CABLE ATTACHMENT: OUTER: CLAMP, INNER: SOLDER

**5.0 ENVIRONMENTAL**

5.1 OPERATING TEMPERATURE RANGE:  $-40^{\circ}$  C TO  $+80^{\circ}$  C



STRIPPING DIMENSION  
SCALE 2:1



12	NUT	BRASS	1	NICKEL 100 $\mu$ " MIN.
11	WASHER II	BRASS	1	NICKEL
10	GASKET II	SILICONE	1	RED
9	BRAID CLAMP	BRASS	1	NICKEL 100 $\mu$ " MIN.
8	CAP	BRASS	1	NICKEL 100 $\mu$ " MIN.
7	INSULATION II	PBT	1	NONE
6	CENTER CONTACT	BRASS	2	SILVER 70 $\mu$ " MIN.
5	INSULATION I	PBT	1	NONE
4	BODY	BRASS	1	NICKEL 100 $\mu$ " MIN.
3	WASHER I	BRASS	1	NONE
2	GASKET I	SILICONE	1	RED
1	SHELL	BRASS	1	NICKEL 100 $\mu$ " MIN.
NO	DESCRIPTION	MATERIAL	Q'TY	FINISH

APPROVED by \_\_\_\_\_ DATE: \_\_\_\_\_



DESCRIPTION		TWINAX STRAIGHT PLUG CLAMP			
製圖	DRAWN	TOLERANCE	品名	21-01	PBT.S.N
	<i>Kristina</i>		±0.2	日期	05.21.15'
檢圖	CHECK	±0.1	TITLE	\ROHS COMPLIANT	
	<i>Arc</i>	±0.05	單位	mm	REV.
認定	APPROVAL	±5°	DWG.NO.	21-0001	
	<i>Angela</i>	ANGLE	比例	3:1	