

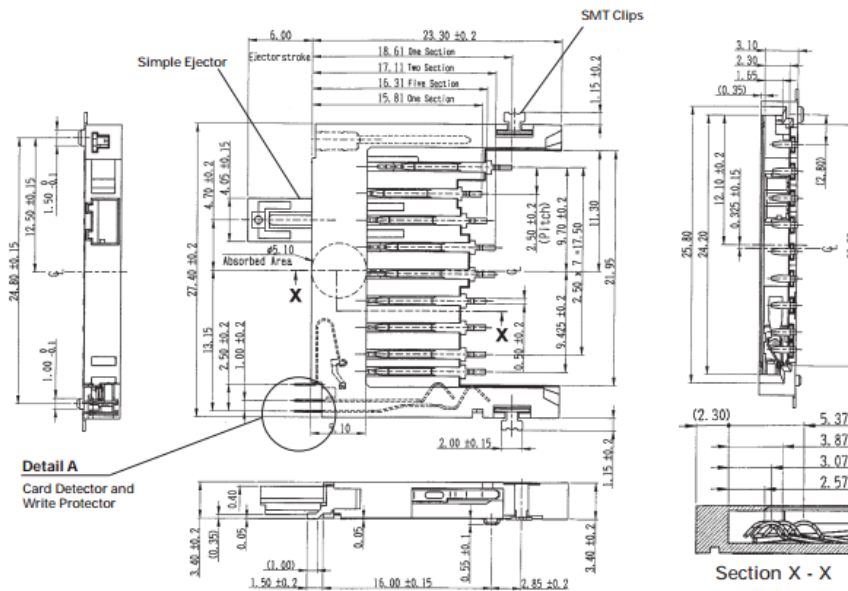
Professionally approved products.

Datasheet

Manual insertion type SD card & MMC conn

RS Stock number [237-647](#)

Dimensions (mm)



Specification

- Insulation Resistance: 1,000MΩ min. at 500V DC
- Withstanding Voltage: 500V AC rms for 1 minute
- Contact Resistance: 100mΩ at 1mA / 20mV max.
- Voltage Rating: 250Vrms AC
- Current Rating: 0.5A
- Operating Temp. Range: -25°C to +85°C
- Coplanarity: < 0.1mm
- Mating Cycles: 10,000 (office environment)

Features

- Connector for both card types (SD and MMC Card)
- Possibility of application specific ejector
- Card detector and simple eject mechanism (optional)
- Tape and Reel packaging (500pieces/reel)
- Easy operation by manual insertion/ extraction
- 3 Step sequential contacting design
- Write Protection Switch

Materials

- Insulator: LCP glass filled
- Contacts: PB, t = 0.23
- Contact area = Ni-Au
- Solder Tails = NI-SnCu
- Write Protection: PB, t = 0.18 Ni-Au
- Card Detector: PB, t = 0.15, Ni-Au
- Ejector: LCP glass filled
- RoHS Certified