

Rittal – The System.

Faster – better – everywhere.

Section for cable entry, centre for VX – VX 8618.802

Date : Jun 17, 2019

ENCLOSURES

POWER DISTRIBUTION

CLIMATE CONTROL

IT INFRASTRUCTURE

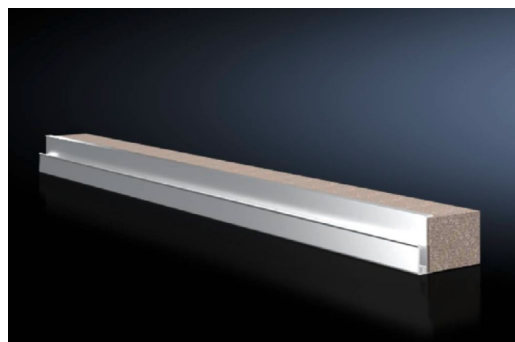
SOFTWARE & SERVICES

FRIEDHELM LOH GROUP



Section for cable entry, centre for VX – VX 8618.802

created: 17.06.2019 on www.rittal.com/com-en



Product description

Description:	The section is fitted directly onto the base opening and onto the enclosure frame. In this way, when installing the mounting plate in the rearmost mounting position, the cables may be routed directly onto a cable clamp rail without large bending radii. In conjunction with the cable clamp rail, this enables optimum adjustment between the cable entry and mounting plate.
Benefits:	Simple assembly Full-surface support High level of sealing of cables inserted into the enclosure
Applications:	For top-mounting on gland plates.
Material:	Extruded aluminium section Seal: PU foam Cross-section: 30 x 25 mm
Protection category IP to IEC 60 529:	IP 55 if installed correctly
Supply includes:	Plug-in sections, incl. foam rubber clamp strip
Note:	You will need two pieces per cable entry point. From an enclosure width of 1000 mm, the base assembly is divided into two sections in the width. Two cable entry points (left/right) may be used.

Product features

To fit:	Width: = 1000 mm
Packs of:	4 pc(s).

Weight/pack:	0.36 kg
Copper weight (kg per piece):	0
EAN:	4028177922761
Customs tariff number:	76042990
ETIM 6.0:	EC000211
ETIM 5.0:	EC000211
eCl@ss 8.0/8.1:	27142421
eCl@ss 7.0/7.1:	27400604
eCl@ss 6.0/6.1:	27400604
eCl@ss 5.1/5.1.4:	27189222
Product description:	VX Section for cable entry, centre, for W: 1000 mm