

BC 161,6 OT 0C20C20C2 KMGY - Upper housing part



1218565

<https://www.phoenixcontact.com/in/products/1218565>

Please be informed that the data shown in this PDF document is generated from our online catalog. Please find the complete data in the user documentation. Our general terms of use for downloads are valid.



DIN rail housing for use in distribution boards in accordance with DIN 43880, modular upper housing part, width: 161.6 mm, height: 89.7 mm, depth: 54.85 mm, color: light gray (similar RAL 7035)

Your advantages

- Coordinated housing and connection system for faster device development
- Individual online configuration for diverse applications in building automation
- Variety of connection technology
- Can be mounted on the DIN rail or the wall
- With DIN-rail-mountable bus connector and power connector system as an option
- Tool-free mounting
- Available in overall widths from 1 ... 9 width units (17.8 mm ... 161.6 mm)
- Compliant with DIN EN 43880

Commercial data

Item number	1218565
Packing unit	10 pc
Minimum order quantity	500 pc
Note	Made to order (non-returnable)
Sales key	*****
Product key	ACHBAB
GTIN	4063151339661
Weight per piece (including packing)	62.87 g
Weight per piece (excluding packing)	39.25 g
Customs tariff number	84879090
Country of origin	DE

1218565

<https://www.phoenixcontact.com/in/products/1218565>

Technical data

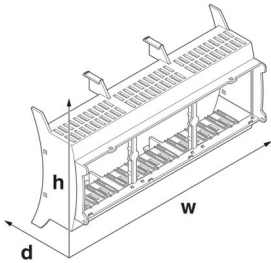
Notes

Assembly note	Please observe the application note in the download area.
---------------	---

Product properties

Product type	Upper housing part
Housing type	DIN rail housing for use in distribution boards in accordance with DIN 43880
Housing series	BC
Product family	BC 161,6..
Type	modular upper housing part
Ventilation openings present	no

Dimensions

Dimensional drawing	
Width	161.6 mm
Height	89.7 mm
Depth	54.85 mm
Horizontal pitch	9 Div.

PCB design

PCB thickness	1.4 mm ... 1.8 mm
---------------	-------------------

Material specifications

Color (Housing)	light gray (RAL 7035)
Flammability rating according to UL 94	V0
Housing material	PC

Environmental and real-life conditions

Vibration test

Specification	IEC 60068-2-6:2007-12
Frequency	10 - 150 - 10 Hz
Sweep speed	1 octave/min
Amplitude	0.15 mm (10 Hz ... 58.1 Hz)
Acceleration	2g (58.1 Hz ... 150 Hz)
Test duration per axis	2.5 h

BC 161,6 OT 0C20C20C2 KMGY - Upper housing part



1218565

<https://www.phoenixcontact.com/in/products/1218565>

Test directions	X-, Y- and Z-axis
-----------------	-------------------

Glow-wire test

Specification	IEC 60695-2-11:2014-02
Temperature	850 °C
Time of exposure	30 s

Mechanical strength / tumbling barrel

Specification	IEC 60068-2-31:2008-05
Height of fall	50 cm
Frequency	50

Shocks

Specification	IEC 60068-2-27:2008-02
Pulse shape	Half-sine
Acceleration	15g
Shock duration	11 ms
Number of shocks per direction	3
Test directions	X-, Y- and Z-axis (pos. and neg.)

Degree of protection (IP code)

Specification	IEC 60529:1989-11 + AMD 1:1999-11 + AMD 2:2013-08
---------------	---

Ambient conditions

Max. IP code to attain	IP20
Ambient temperature (operation)	-40 °C ... 105 °C (depending on power dissipation)
Ambient temperature (storage/transport)	-40 °C ... 70 °C
Ambient temperature (assembly)	-5 °C ... 100 °C
Relative humidity (storage/transport)	95 %

PCB data

Number of PCB holders	18
Type of PCB mount	Latching
Thickness of the PCB	1.4 mm ... 1.8 mm

Mounting

Mounting type	Snap in
---------------	---------

Packaging specifications

Type of packaging	packed in cardboard
Outer packaging type	Carton

BC 161,6 OT 0C20C20C2 KMGY - Upper housing part



1218565

<https://www.phoenixcontact.com/in/products/1218565>

Drawings

Dimensional drawing



Schematic figure for illustrating the item dimensions. The figure is not of the desired product. For further details, refer to the product drawings in the "Downloads" tab.

BC 161,6 OT 0C20C20C2 KMGY - Upper housing part



1218565

<https://www.phoenixcontact.com/in/products/1218565>

Approvals

🔗 To download certificates, visit the product detail page: <https://www.phoenixcontact.com/in/products/1218565>



UL Recognized

Approval ID: E240868

BC 161,6 OT 0C20C20C2 KMGY - Upper housing part



1218565

<https://www.phoenixcontact.com/in/products/1218565>

Classifications

ECLASS

ECLASS-11.0	27182702
ECLASS-13.0	27190603

ETIM

ETIM 9.0	EC002779
----------	----------

UNSPSC

UNSPSC 21.0	31261500
-------------	----------

Environmental product compliance

EU RoHS	
Fulfills EU RoHS substance requirements	Yes, No exemptions
China RoHS	
Environment friendly use period (EFUP)	EFUP-E
	No hazardous substances above the limits
EU REACH SVHC	
REACH candidate substance (CAS No.)	No substance above 0.1 wt%

BC 161,6 OT 0C20C20C2 KMGY - Upper housing part



1218565

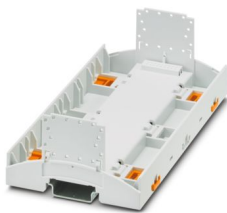
<https://www.phoenixcontact.com/in/products/1218565>

Mandatory accessories

BC 161,6 UT HBUS KMGY - Mounting base housing

1227345

<https://www.phoenixcontact.com/in/products/1227345>



DIN rail housing for use in distribution boards in accordance with DIN 43880, Lower housing part with base latch, width: 161.6 mm, height: 89.7 mm, depth: 48.9 mm, color: light gray (similar RAL 7035), cross connection: DIN rail connector (optional), number of positions cross connector: 16

BC 161,6 UT HBUS BK - Mounting base housing

2278500

<https://www.phoenixcontact.com/in/products/2278500>



DIN rail housing for use in distribution boards in accordance with DIN 43880, Lower housing part with base latch, width: 161.6 mm, height: 89.7 mm, depth: 48.9 mm, color: black (similar RAL 9005), cross connection: DIN rail connector (optional), number of positions cross connector: 16

BC 161,6 OT 0C20C20C2 KMGY - Upper housing part



1218565

<https://www.phoenixcontact.com/in/products/1218565>

BC 161,6 UT HBUS GY7021 - Mounting base housing

1560324

<https://www.phoenixcontact.com/in/products/1560324>

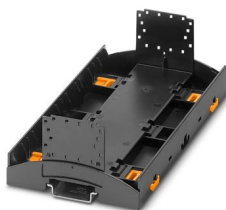


DIN rail housing for use in distribution boards in accordance with DIN 43880, Lower housing part with base latch, width: 161.6 mm, height: 89.7 mm, depth: 48.9 mm, color: black gray (similar RAL 7021), cross connection: DIN rail connector (optional), number of positions cross connector: 16

BC 161,6 UT HBUS FS BK VPE80 - Mounting base housing

2200072

<https://www.phoenixcontact.com/in/products/2200072>



DIN rail housing for use in distribution boards in accordance with DIN 43880, Lower housing part with base latch, width: 161.6 mm, height: 89.7 mm, depth: 48.9 mm, color: black (similar RAL 9005), cross connection: DIN rail connector (optional), number of positions cross connector: 16

BC 161,6 OT 0C20C20C2 KMGY - Upper housing part



1218565

<https://www.phoenixcontact.com/in/products/1218565>

BC 161,6 DKL S TRANS BK - Housing cover

1210711

<https://www.phoenixcontact.com/in/products/1210711>



DIN rail housing for use in distribution boards in accordance with DIN 43880, transparent hinged cover, can be sealed, width: 161.6 mm, height: 45 mm, depth: 8 mm, color: black (similar RAL 9005)

BC 161,6 DKL S TRANS WH - Housing cover

1252988

<https://www.phoenixcontact.com/in/products/1252988>



DIN rail housing for use in distribution boards in accordance with DIN 43880, transparent hinged cover, can be sealed, width: 161.6 mm, height: 45 mm, depth: 8 mm, color: transparent

BC 161,6 OT 0C20C20C2 KMGY - Upper housing part



1218565

<https://www.phoenixcontact.com/in/products/1218565>

BC 161,6 DKL R D2,4 TCG BK - Housing cover with touch display

1335862

<https://www.phoenixcontact.com/in/products/1335862>



DIN rail housing for use in distribution boards in accordance with DIN 43880, Latching cover (non-detachable), integrated capacitive 2.4" touch display, resolution: 320 x 240 Pixel(s), interface: 4-wire SPI, width: 161.6 mm, height: 45 mm, depth: 13.5 mm

BC 161,6 DKL R D2,4 TCG KMGY - Housing cover with touch display

1335863

<https://www.phoenixcontact.com/in/products/1335863>



DIN rail housing for use in distribution boards in accordance with DIN 43880, Latching cover (non-detachable), integrated capacitive 2.4" touch display, resolution: 320 x 240 Pixel(s), interface: 4-wire SPI, width: 161.6 mm, height: 45 mm, depth: 13.5 mm

BC 161,6 OT 0C20C20C2 KMGY - Upper housing part



1218565

<https://www.phoenixcontact.com/in/products/1218565>

BC 161,6 DKL R D2,4 KPG KMGY - Housing cover with touch display

1335864

<https://www.phoenixcontact.com/in/products/1335864>



DIN rail housing for use in distribution boards in accordance with DIN 43880, Latching cover (non-detachable), integrated capacitive 2.4" touch display, resolution: 320 x 240 Pixel(s), interface: 4-wire SPI, width: 161.6 mm, height: 45 mm, depth: 13.5 mm

BC 161,6 DKL S TRANS WOP - Housing cover

1361183

<https://www.phoenixcontact.com/in/products/1361183>



DIN rail housing for use in distribution boards in accordance with DIN 43880, transparent hinged cover, can be sealed, without insertion plate, width: 161.6 mm, height: 45 mm, depth: 8 mm, color: transparent

BC 161,6 OT 0C20C20C2 KMGY - Upper housing part



1218565

<https://www.phoenixcontact.com/in/products/1218565>

BC 161,6 DKL R BK9005 - Housing cover

2201664

<https://www.phoenixcontact.com/in/products/2201664>



DIN rail housing for use in distribution boards in accordance with DIN 43880, Latching cover (non-detachable), width: 161.6 mm, height: 45 mm, depth: 8 mm, color: black (similar RAL 9005)

BC 161,6 DKL S KMGY - Housing cover

2202451

<https://www.phoenixcontact.com/in/products/2202451>



DIN rail housing for use in distribution boards in accordance with DIN 43880, Hinged cover, can be sealed, width: 161.6 mm, height: 45 mm, depth: 8 mm, color: light gray (similar RAL 7035)

BC 161,6 OT 0C20C20C2 KMGY - Upper housing part



1218565

<https://www.phoenixcontact.com/in/products/1218565>

BC 161,6 DKL S TRANS - Housing cover

2278542

<https://www.phoenixcontact.com/in/products/2278542>



DIN rail housing for use in distribution boards in accordance with DIN 43880, transparent hinged cover, can be sealed, including insertion plate, width: 161.6 mm, height: 45 mm, depth: 8 mm, color: light gray (similar RAL 7035)

HBUS8 161,6-8P-1S BK - DIN rail bus connectors

1249066

<https://www.phoenixcontact.com/in/products/1249066>



DIN rail connector, color: black, nominal current: 3 A (per contact), rated voltage (III/2): 100 V, number of positions: 8, product range: BC 161,6.., pitch: 2.54 mm, mounting: DIN rail mounting, locking: without

BC 161,6 OT 0C20C20C2 KMGY - Upper housing part



1218565

<https://www.phoenixcontact.com/in/products/1218565>

HBUS 161,6-16P-1S BK - DIN rail bus connectors

2278555

<https://www.phoenixcontact.com/in/products/2278555>



DIN rail connector, color: black, nominal current: 3 A (Total current of 25 A max.), rated voltage (III/2): 30 V, number of positions: 16, product range: BC 161,6..., pitch: 2.54 mm, mounting: DIN rail mounting, locking: without

HBUS8-B SET BK - Protective cap

1252176

<https://www.phoenixcontact.com/in/products/1252176>



Set of 3 caps, for protecting unused DIN rail bus connectors, simply snap on to fit

BC 161,6 OT 0C20C20C2 KMGY - Upper housing part



1218565

<https://www.phoenixcontact.com/in/products/1218565>

HBUS-B SET BK - Protective cap

2278173

<https://www.phoenixcontact.com/in/products/2278173>

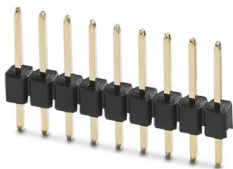


Set of 3 caps, for protecting unused DIN rail bus connectors, simply snap on to fit

PSTD 0,65X0,65/9-1-2,54 - Pin strip

1252180

<https://www.phoenixcontact.com/in/products/1252180>



Pin strip, color: black, nominal current: 3 A (per contact), rated voltage (III/2): 100 V, contact connection type: Pin, number of potentials: 9, number of rows: 1, number of positions: 9, number of connections: 9, product range: PSTD 0,65X0,65/...-1-V, pitch: 2.54 mm, mounting: THR soldering, pin layout: Linear pinning, solder pin [P]: 6.3 mm, locking: without, type of packaging: packed in cardboard

BC 161,6 OT 0C20C20C2 KMGY - Upper housing part



1218565

<https://www.phoenixcontact.com/in/products/1218565>

PSTD 0,65X0,65/9-2,54 - Pin strip

2200700

<https://www.phoenixcontact.com/in/products/2200700>



Pin strip, color: black, contact connection type: Pin, number of potentials: 18, number of rows: 2, number of positions: 18, number of connections: 18, product range: PSTD 0,65X0,65/...-V, pitch: 2.54 mm, mounting: THR soldering, pin layout: Linear pinning, solder pin [P]: 2.5 mm, locking: without, type of packaging: packed in cardboard

PSTD 0,65X0,65/9-3IS-2,54 - Pin strip

1252178

<https://www.phoenixcontact.com/in/products/1252178>



Pin strip, color: black, nominal current: 3 A (per contact), rated voltage (III/2): 100 V, contact connection type: Pin, number of potentials: 9, number of rows: 1, number of positions: 9, number of connections: 9, pitch: 2.54 mm, mounting: THR soldering, pin layout: Linear pinning, solder pin [P]: 2.5 mm, locking: without, type of packaging: packed in cardboard

BC 161,6 OT 0C20C20C2 KMGY - Upper housing part



1218565

<https://www.phoenixcontact.com/in/products/1218565>

PSTD 0,65X0,65/18-3IS-2,54 - Pin strip

2202993

<https://www.phoenixcontact.com/in/products/2202993>



Pin strip for connecting an additional PCB or PCB with hole pattern to the HBUS

FUSSRIEGEL 14,4 L30 SPERR OG - Base latch

2896998

<https://www.phoenixcontact.com/in/products/2896998>



DIN rail housing for use in distribution boards in accordance with DIN 43880, Base latch, width: 14.4 mm, height: 29.8 mm, depth: 5.9 mm, color: orange (similar RAL 2003)

BC 161,6 OT 0C20C20C2 KMGY - Upper housing part



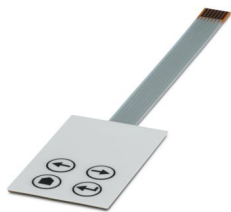
1218565

<https://www.phoenixcontact.com/in/products/1218565>

KP BC K4 C2 P5 - Membrane keypad

1337341

<https://www.phoenixcontact.com/in/products/1337341>

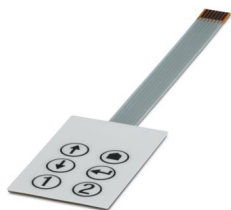


Membrane keypad for BC 107,6 and BC 161,6, self-adhesive, conductive silver technology, 4 keys, 2 colors, 7-pos. terminal lug, pitch: 1.0 mm, customizable in the online configurator

KP BC K6 C2 P7 - Membrane keypad

1337344

<https://www.phoenixcontact.com/in/products/1337344>



Membrane keypad for BC 107,6 and BC 161,6, self-adhesive, conductive silver technology, 6 keys, 2 colors, 7-pos. terminal lug, pitch: 1.0 mm, customizable in the online configurator

BC 161,6 OT 0C20C20C2 KMGY - Upper housing part



1218565

<https://www.phoenixcontact.com/in/products/1218565>

BC 161,6 PLATE KMGY - Insertion plate

1150589

<https://www.phoenixcontact.com/in/products/1150589>

DIN rail housing for use in distribution boards in accordance with DIN 43880, Insertion plate, width: 158.3 mm, height: 41.75 mm, depth: 1.5 mm, color: light gray (similar RAL 7035)



Phoenix Contact 2025 © - all rights reserved

<https://www.phoenixcontact.com>

PHOENIX CONTACT (I) Pvt. Ltd.

A-58/2, Okhla Industrial Area, Phase - II, New Delhi-110 020

+91.1275.71420

info@phoenixcontact.co.in