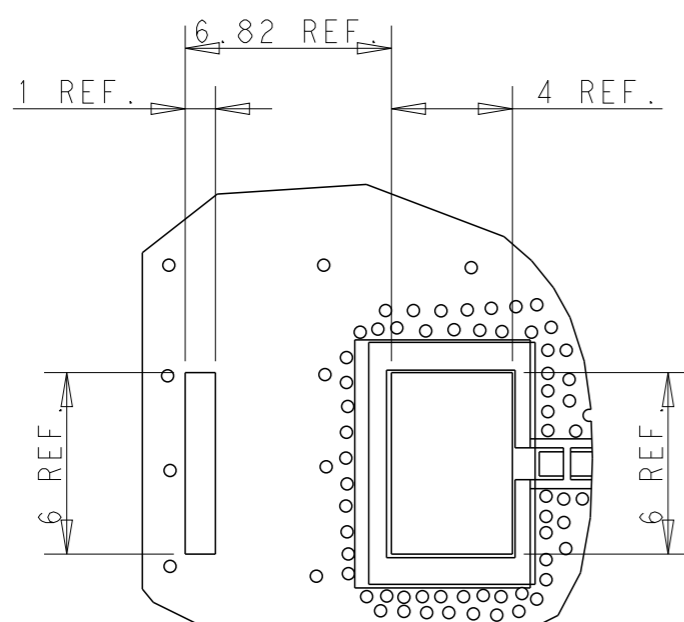
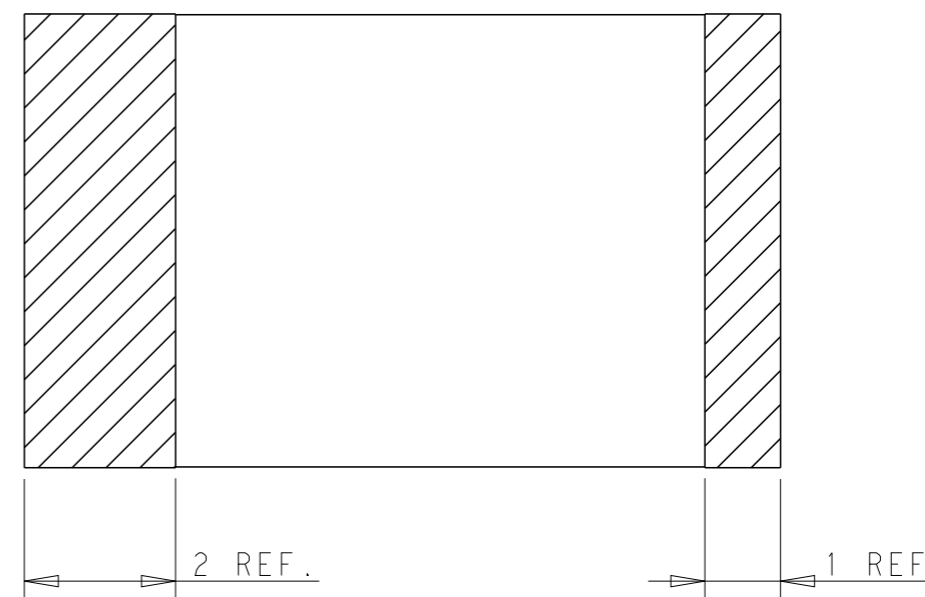
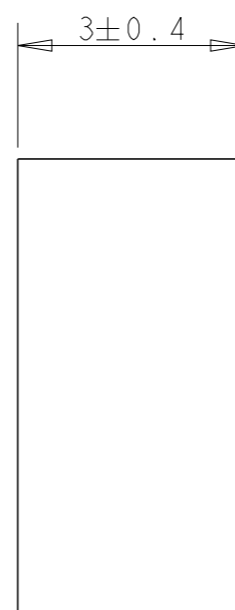
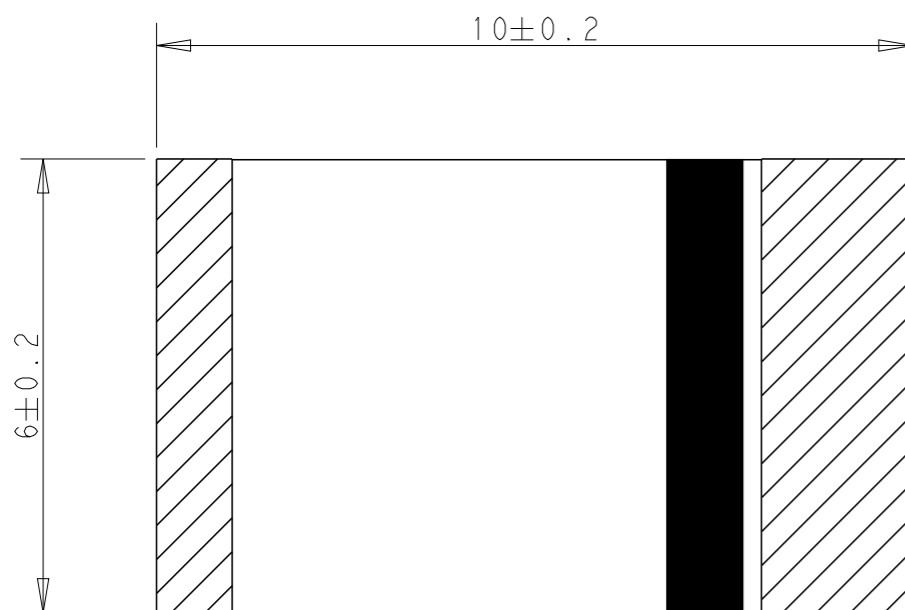


P	LTR	DESCRIPTION	DATE	DWN	APVD
	A	REVISED PER ECN-24-297338	10DEC2024	DW	VK



RECOMMENDED PCB LAYOUT  
SCALE 4:1

NOTES: UNLESS OTHERWISE SPECIFIED.

1. MATERIAL : CERAMIC
2. CONSULT TE CONNECTIVITY DATA SHEET : L000949
3. CONTACT TE CONNECTIVITY ENGINEERING PRIOR TO DESIGN INTO AN APPLICATION.
4. PACKAGING : TAPE AND REEL PACKAGED, SEE SHEET 2

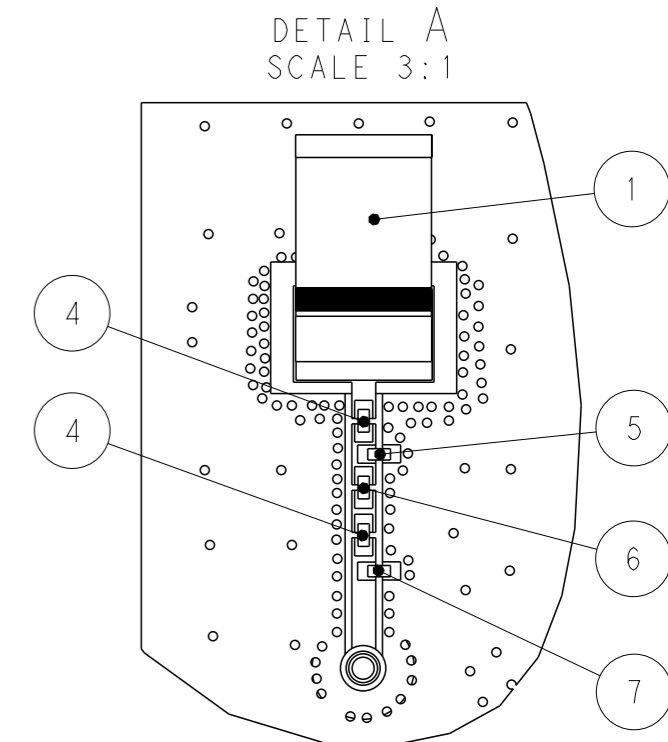
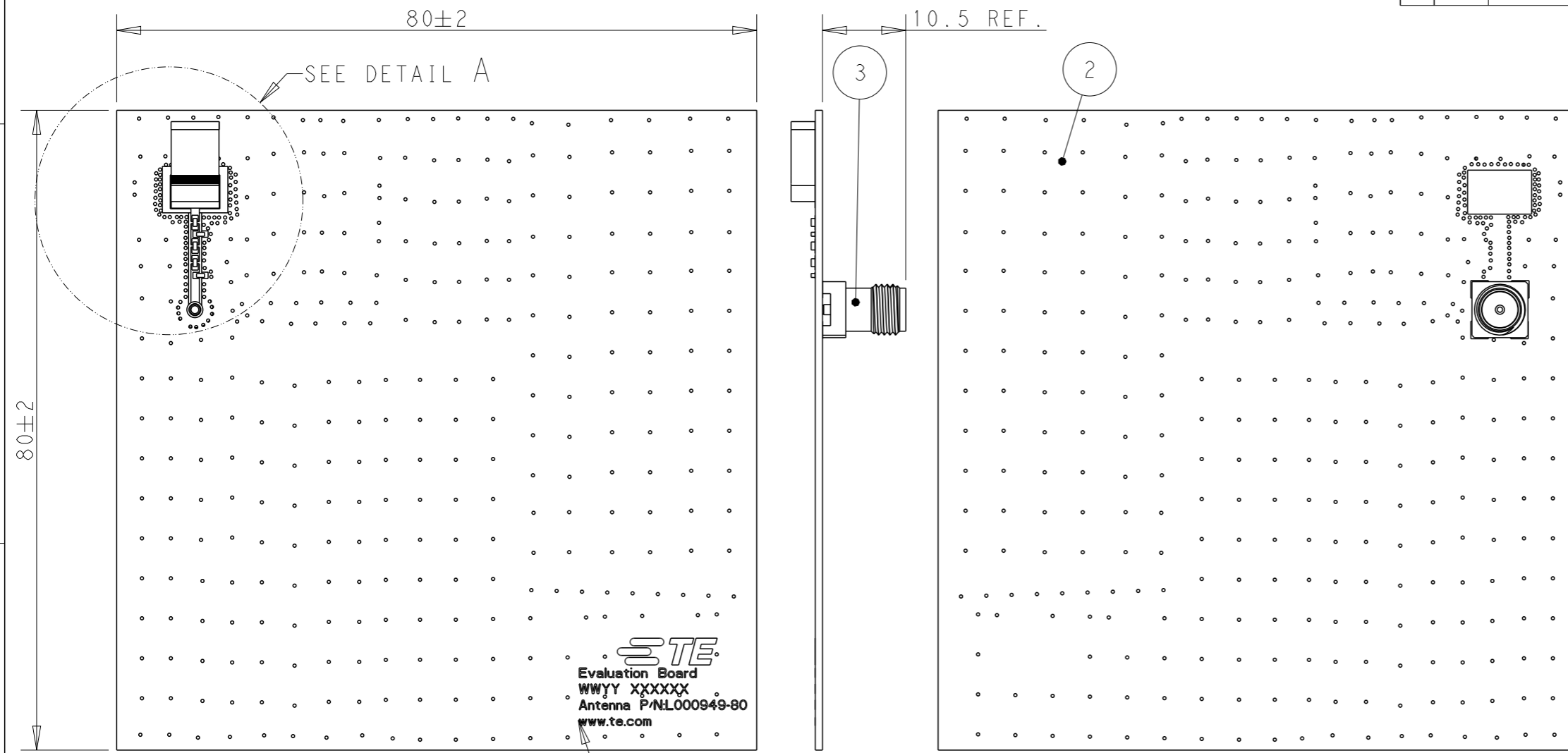
TAPE AND REELED	L000949-01
PACKAGING	PART NUMBER

THIS DRAWING IS A CONTROLLED DOCUMENT.		DWN DW.PARK	27JUN2024	<b>TE</b> TE Connectivity
DIMENSIONS: mm		CHK SJ.NOH	27JUN2024	
		APVD NG.WEITAT	27JUN2024	
		PRODUCT SPEC 108-161641		
TOLERANCES UNLESS OTHERWISE SPECIFIED:		NAME Chip ANT, 2.4+5GHz, Dual Wi-Fi, 6x10mm		
0 PLC ±-		APPLICATION SPEC		
1 PLC ±-		-		SIZE
2 PLC ±-		WEIGHT		CAGE CODE
3 PLC ±-		CUSTOMER DRAWING		DRAWING NO
4 PLC ±-		SCALE 10:1		RESTRICTED TO
ANGLES ±-		SHEET 1 OF 4		REV A
FINISH		-		
MATERIAL		-		



P	LTR	DESCRIPTION	DATE	DWN	APVD
		SEE SHEET 1			

ANTENNA WITH EVB ASS'Y



VACUUM IN BULK		L000949-80
PACKAGING		PART NUMBER
1	CAPACITOR(0.2pF), 0402	7
1	CAPACITOR(5pF), 0402	6
1	CAPACITOR(0.4pF), 0402	5
2	RESISTOR(00HM), 0402	4
1	SMA FEMALE CONN.	3
1	EVB	2
1	ANTENNA	1
Q'TY (PC)	DESCRIPTION	ITEM

NOTES: UNLESS OTHERWISE SPECIFIED.

- 1. MATERIAL : SEE TABLE.
- 2. FINISH : EVB ASSEMBLY WITH SOLDER PROCESS

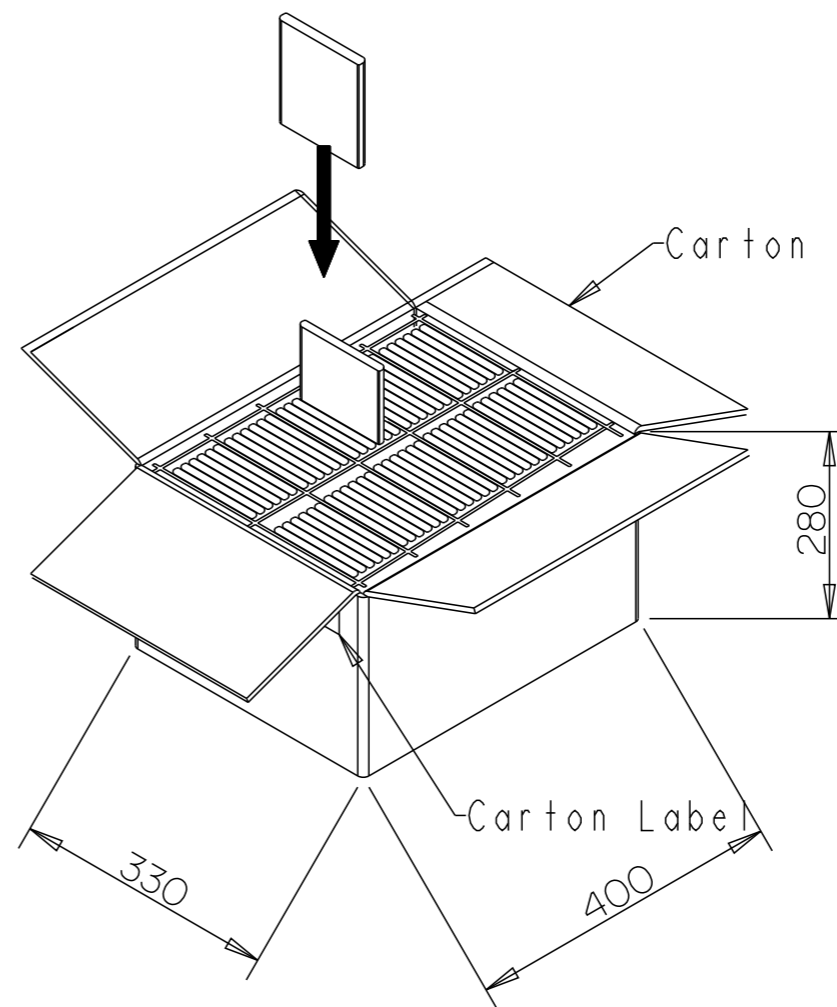
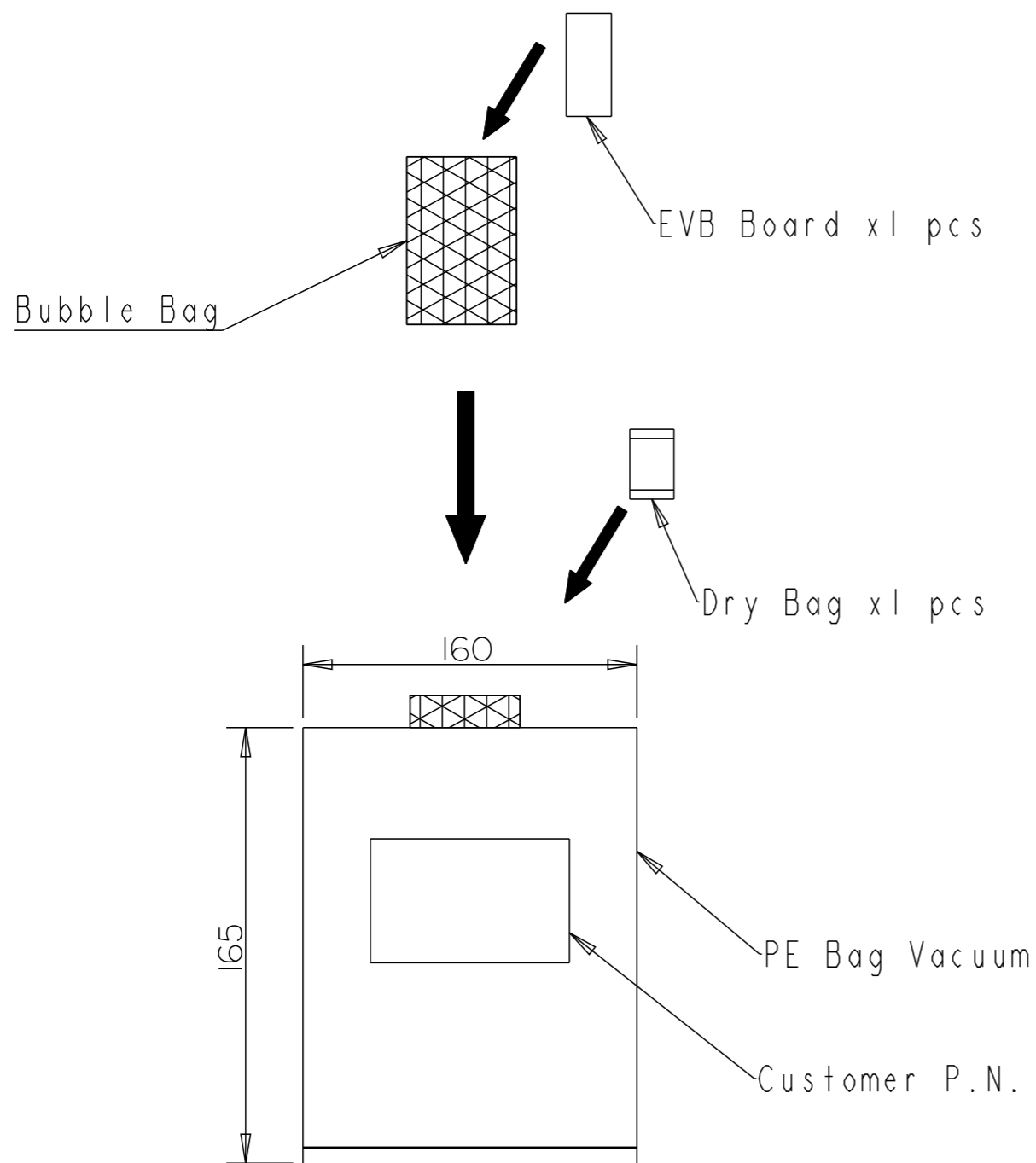
3. SILKSCREEN : WHITE EPOXY INK  
 A. TE LOGO, TE P/N  
 B. WORD REV., FOLLOWED BY THE LATEST REVISION, AS SHOWN/  
 C. 4 DIGITS DATE CODE : FIRST 2 DIGITS FOR THE WEEK CODE AND THE 2ND TWO DIGITS FOR THE YEAR CODE.  
 OTHERS : SPECIFIED TE SOURCE CODE NUMBER DIGITS AS REQUIRED.

- 4. CONSULTS TE CONNECTIVITY DATA SHEET L000949
- 5. CONTACT TE CONNECTIVITY ENGINEERING PRIOR TO DESIGNING INTO AN APPLICATION.
- 6. PACKAGING: SECURELY VACUUM PACKAGED IN BULK.

THIS DRAWING IS A CONTROLLED DOCUMENT.		DWN DW.PARK 27JUN2024			NAME Chip ANT, 2.4+5GHz, Dual Wi-Fi, 6x10mm		
DIMENSIONS: mm		CHK SJ.NOH 27JUN2024					
TOLERANCES UNLESS OTHERWISE SPECIFIED:		APVD NG.WEITAT 27JUN2024					
0 PLC ±- 1 PLC ±- 2 PLC ±- 3 PLC ±- 4 PLC ±- ANGLES ±-		PRODUCT SPEC 108-160936					
MATERIAL		APPLICATION SPEC -	SIZE A3	CAGE CODE 00779	DRAWING NO C=L000949	RESTRICTED TO -	
		WEIGHT -	CUSTOMER DRAWING		SCALE 3:2	SHEET 3 OF 4	REV A

# PACKAGING SPECIFICATIONS FOR REFERENCE

REVISIONS					
P	LTR	DESCRIPTION	DATE	DWN	APVD
		SEE SHEET 1			



1 PE Bag  
= 1 pc EVB Board

1 Carton  
= 60 PE Bags  
= 60 pcs EVB Board

\*Buffer Filling Of Product Packaging

THIS DRAWING IS A CONTROLLED DOCUMENT.		DWN DW. PARK	27JUN2024		
DIMENSIONS: mm		CHK SJ. NOH	27JUN2024		
TOLERANCES UNLESS OTHERWISE SPECIFIED:		APVD NG. WEITAT	27JUN2024		
		PRODUCT SPEC	-		
MATERIAL		FINISH		NAME Chip ANT, 2.4+5GHz, Dual Wi-Fi, 6x10mm	RESTRICTED TO
-		-		SIZE A3	CAGE CODE 00779
-		-		DRAWING NO L000949	SCALE 1:1
-		-		SHEET 4 OF 4	
-		-		REV A	