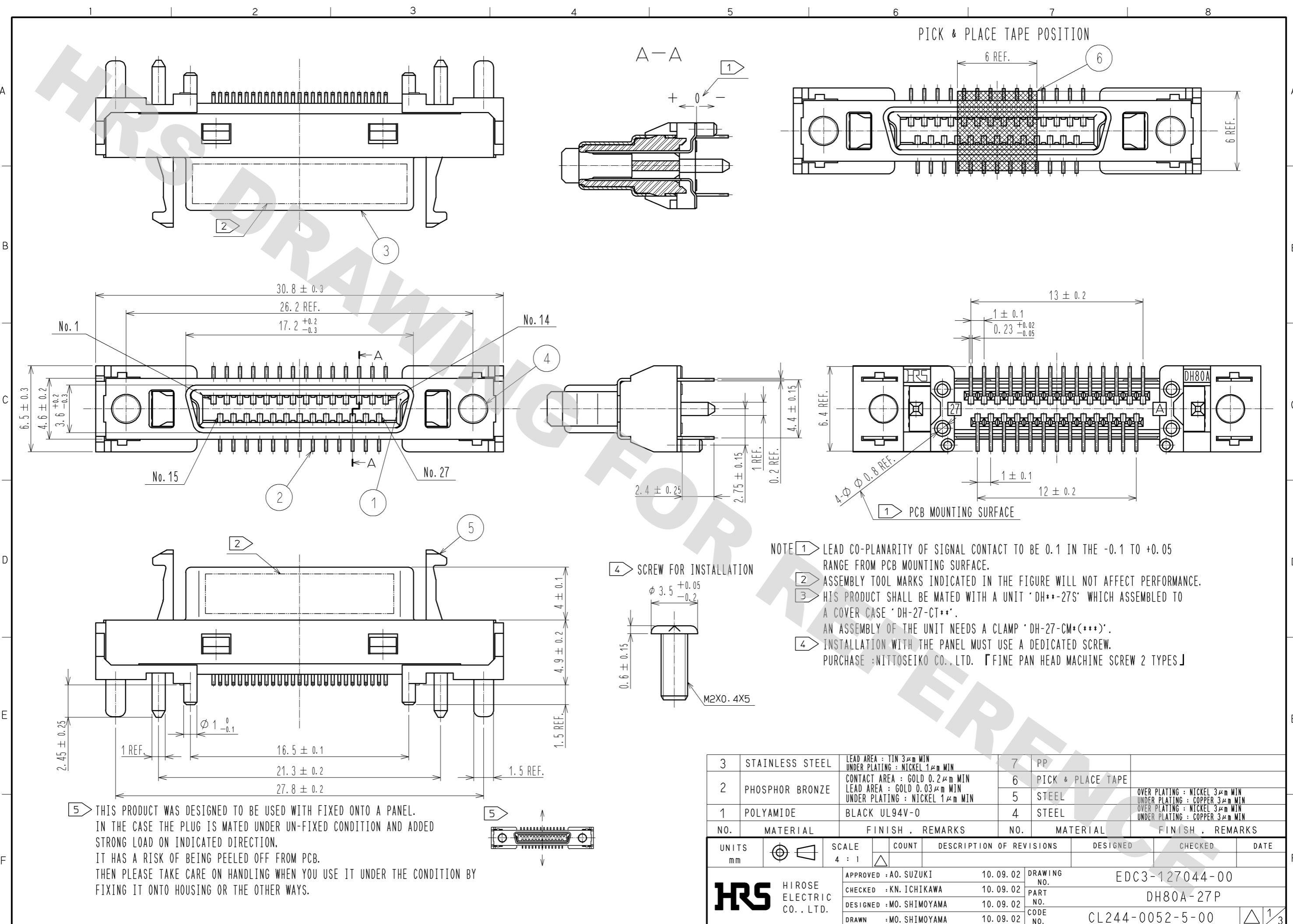


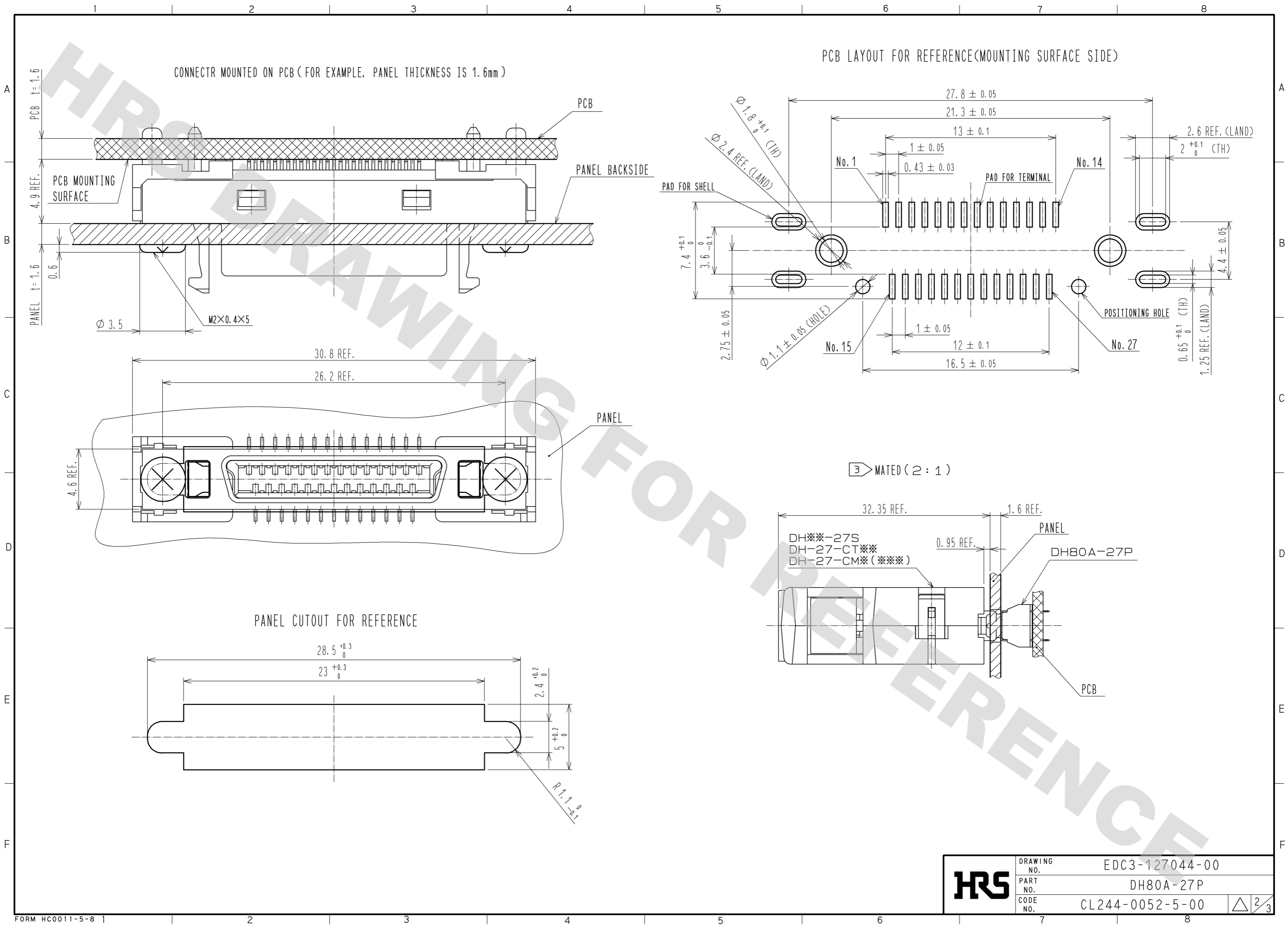
DRAWING FOR REFERENCE: This is subject to change without notice
08/11/2012



| NO. | MATERIAL | FINISH | REMARKS | NO. | MATERIAL | FINISH | REMARKS |
|-----|-----------------|--------|--|-----|-------------------|--------|---|
| 3 | STAINLESS STEEL | | LEAD AREA : TIN 3μm MIN UNDER PLATING : NICKEL 1μm MIN | 7 | PP | | |
| 2 | PHOSPHOR BRONZE | | CONTACT AREA : GOLD 0.2μm MIN LEAD AREA : GOLD 0.03μm MIN UNDER PLATING : NICKEL 1μm MIN | 6 | PICK & PLACE TAPE | | |
| 1 | POLYAMIDE | | BLACK UL94V-0 | 5 | STEEL | | OVER PLATING : NICKEL 3μm MIN UNDER PLATING : COPPER 3μm MIN |
| | | | | 4 | STEEL | | OVER PLATING : NICKEL 3μm MIN UNDER PLATING : COPPER 3μm MIN |

| UNITS | SCALE | COUNT | DESCRIPTION OF REVISIONS | DESIGNED | CHECKED | DATE |
|--------------------------|-------|-------|--------------------------|----------------------------|---------|------|
| mm | 4 : 1 | △ | | | | |
| APPROVED : A0. SUZUKI | | | 10.09.02 | DRAWING NO. EDC3-127044-00 | | |
| CHECKED : KN. ICHIKAWA | | | 10.09.02 | PART NO. DH80A-27P | | |
| DESIGNED : MO. SHIMOYAMA | | | 10.09.02 | CODE NO. CL244-0052-5-00 | | |
| DRAWN : MO. SHIMOYAMA | | | 10.09.02 | △ 1/3 | | |

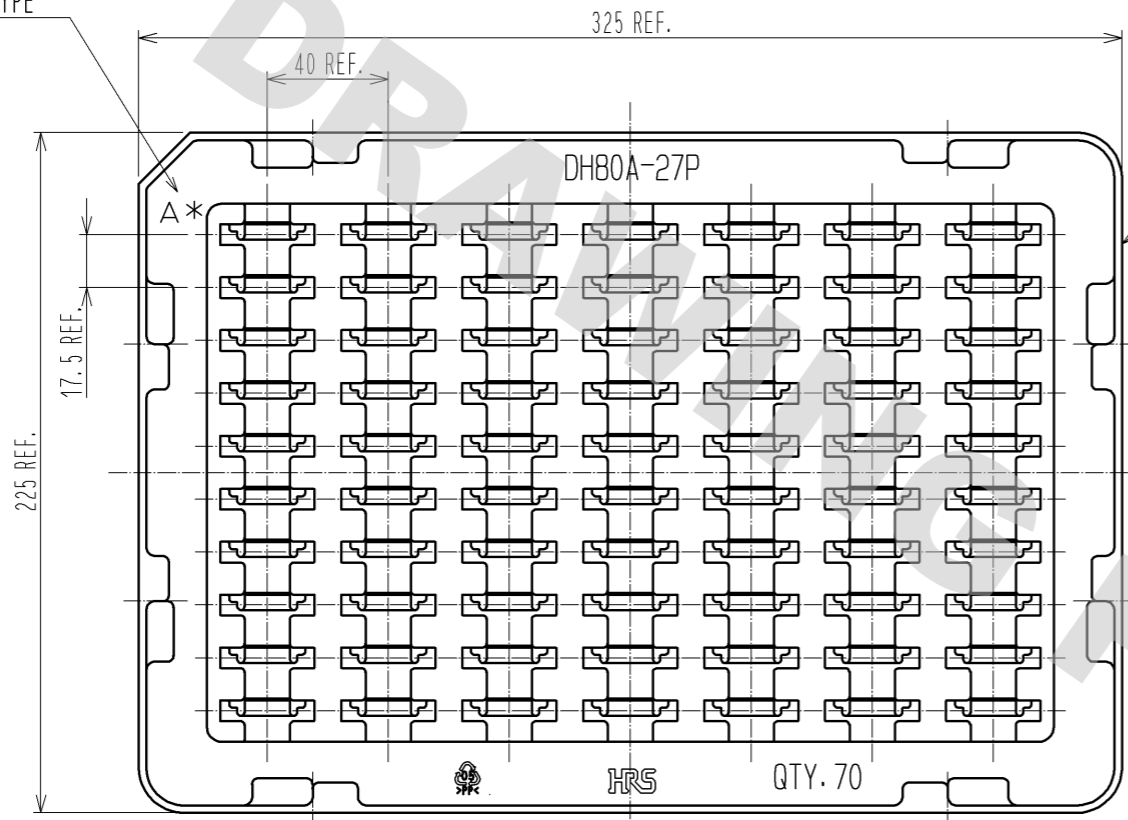
DRAWING FOR REFERENCE: This is subject to change without notice
08/11/2012



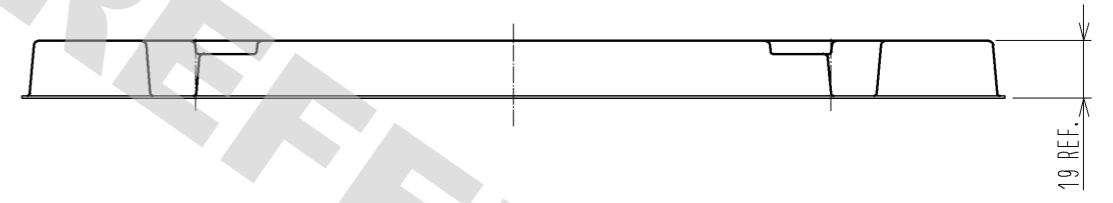
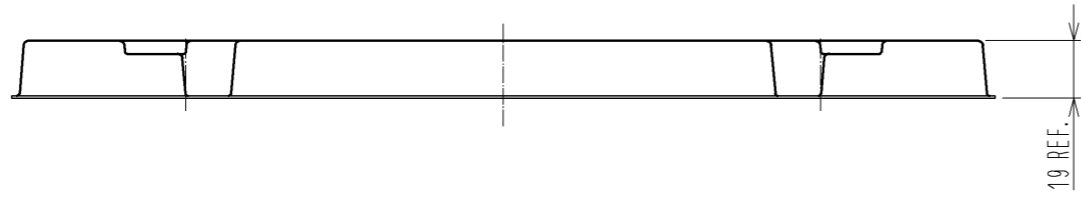
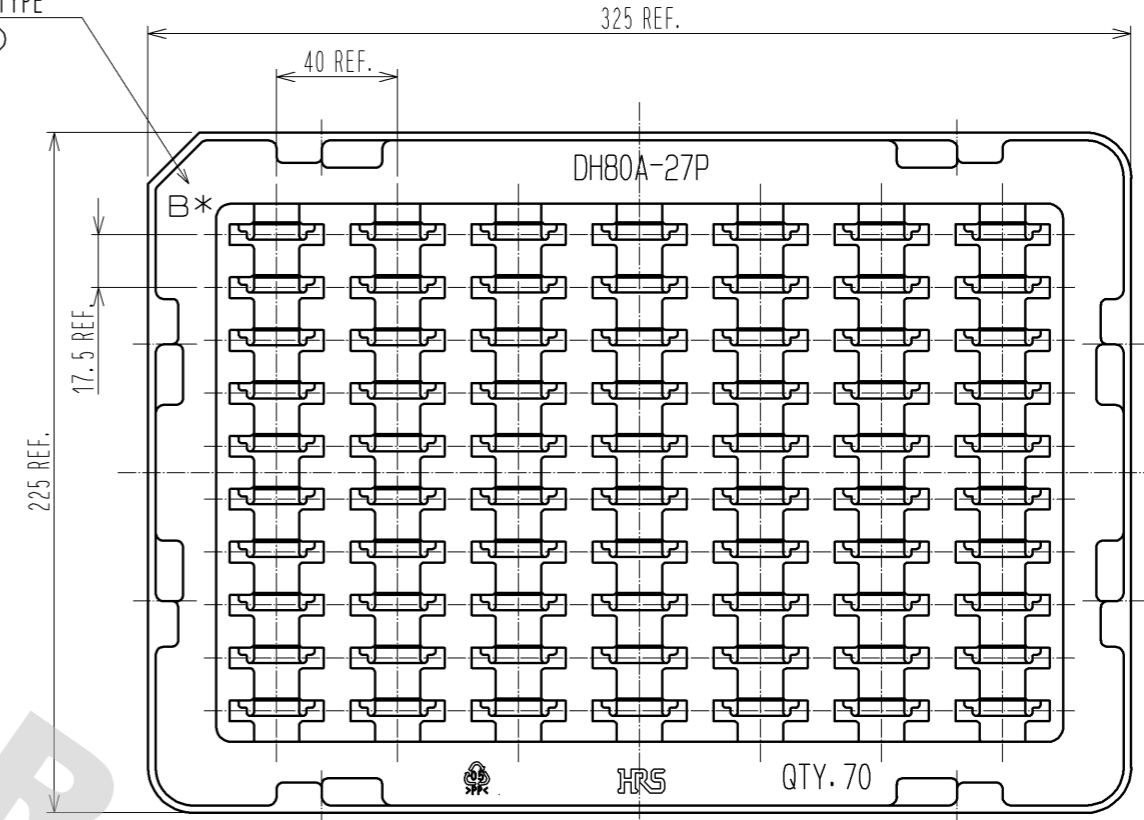
| | | | |
|------------|-------------|-----------------|-----|
| HRS | DRAWING NO. | EDC3-127044-00 | 2/3 |
| | PART NO. | DH80A-27P | |
| | CODE NO. | CL244-0052-5-00 | |
| | | | |

DRAWING FOR PACKING(FREE)

TRAY KEY TYPE
(A TYPE)



TRAY KEY TYPE
(B TYPE)



※TRAYS, A TYPE AND B TYPE, ARE PILED UP ALTERNATELY.

| | | | |
|------------|-------------|-----------------|-----|
| HRS | DRAWING NO. | EDC3-127044-00 | 3/3 |
| | PART NO. | DH80A-27P | |
| | CODE NO. | CL244-0052-5-00 | |
| | | | |

DRAWING FOR REFERENCE: This is subject to change without notice
08/11/2012