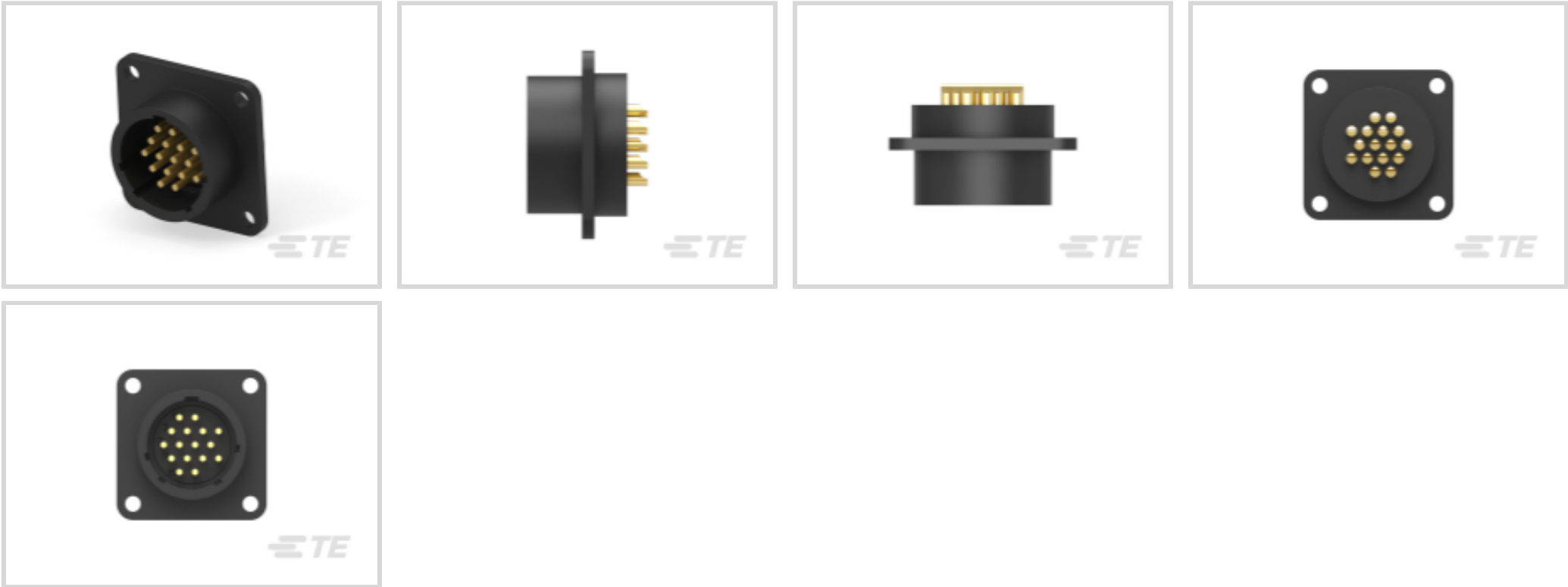




Connectors > Power Connectors > Circular Power > Circular Power Connectors



Number of Positions: 16

Connector Product Type: Connector Assembly

Operating Voltage: 250 VDC

Connector System: Wire-to-Panel, Wire-to-Wire

Sealable: Yes

Features

Product Type Features

Connector Product Type	Connector Assembly
Connector System	Wire-to-Panel, Wire-to-Wire
Sealable	Yes
Connector & Contact Terminates To	Wire & Cable
Connector & Housing Type	Receptacle
Circular Connector Shell Type	All Plastic

Configuration Features

Number of Positions	16
Number of Power Positions	0
Number of Signal Positions	16

Electrical Characteristics

Operating Voltage	250 VAC
-------------------	---------

Contact Features

Reverse Gender	No
----------------	----



Contact Type	Pin
Contact Current Rating (Max)	13 A
Contact Protection	With

Termination Features

Termination Method to Wire & Cable	Solder
------------------------------------	--------

Mechanical Attachment

Panel Mount Feature Type	Flange with Mounting Holes
Mating Alignment Type	Keyed
Mating Retention Type	Threaded Coupling
Mating Alignment	With
Connector Mounting Type	Panel Mount
Mating Retention	With
Panel Mount Feature	With

Housing Features

Housing Color	Black
Housing Material	PA 6.6 GF
Circular Connector Shell Size	17

Usage Conditions

Operating Temperature Range	-55 – 105 °C[-67 – 221 °F]
Fluid Resistance	None

Operation/Application

Circuit Application	Signal
Shielded	No

Industry Standards

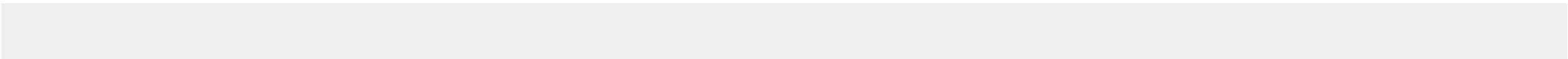
UL Flammability Rating	UL 94V-0
------------------------	----------

Packaging Features

Packaging Quantity	24
Packaging Method	Standard

Product Compliance

For compliance documentation, visit the product page on [TE.com](#)>





EU RoHS Directive 2011/65/EU	Compliant with Exemptions
EU ELV Directive 2000/53/EC	Compliant with Exemptions
China RoHS 2 Directive MIIT Order No 32, 2016	Restricted Materials Above Threshold
EU REACH Regulation (EC) No. 1907/2006	Current ECHA Candidate List: JAN 2025 (247) Candidate List Declared Against: JAN 2025 (247) SVHC > Threshold: Pb (3.7% in 74019106) Article Safe Usage Statements: Do not eat, drink or smoke when using this product. Wash thoroughly after handling. Recycle if possible and dispose of the article by following all applicable governmental regulations relevant to your geographic location.
Halogen Content	BFR/CFR/PVC Free, but Br/Cl >900 ppm in other sources.
Solder Process Capability	Not applicable for solder process capability

Product Compliance Disclaimer

This information is provided based on reasonable inquiry of our suppliers and represents our current actual knowledge based on the information they provided. This information is subject to change. The part numbers that TE has identified as EU RoHS compliant have a maximum concentration of 0.1% by weight in homogenous materials for lead, hexavalent chromium, mercury, PBB, PBDE, DBP, BBP, DEHP, DIBP, and 0.01% for cadmium, or qualify for an exemption to these limits as defined in the Annexes of Directive 2011/65/EU (RoHS2). Finished electrical and electronic equipment products will be CE marked as required by Directive 2011/65/EU. Components may not be CE marked. Additionally, the part numbers that TE has identified as EU ELV compliant have a maximum concentration of 0.1% by weight in homogenous materials for lead, hexavalent chromium, and mercury, and 0.01% for cadmium, or qualify for an exemption to these limits as defined in the Annexes of Directive 2000/53/EC (ELV). Regarding the REACH Regulation, the information TE provides on SVHC in articles for this part number is based on the latest European Chemicals Agency (ECHA) ‘Guidance on requirements for substances in articles’ posted at this URL: <https://echa.europa.eu/guidance-documents/guidance-on-reach>

Compatible Parts



Also in the Series | AMP Circular Plastic Connectors



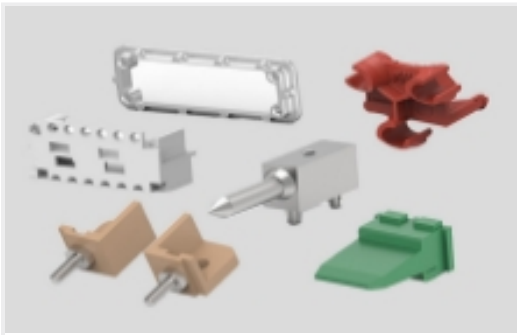
Circular Connector Backshells & Clamps(1)



Circular Power Connectors(211)



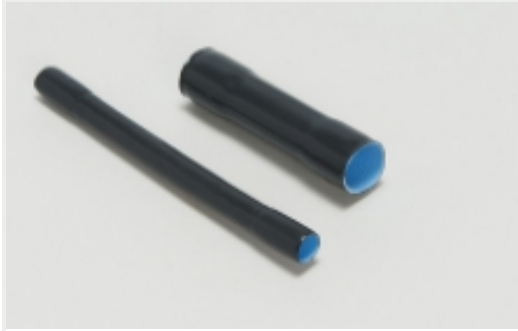
Connector Contacts(260)



Connector Hardware(10)



Power Contacts(260)



Sealing Sleeves(2)

Also in the Series | Circular Plastic Connectors Series 1



Circular Power Connectors(211)

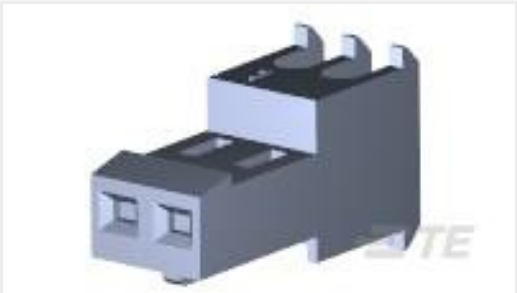


Connector Contacts(260)

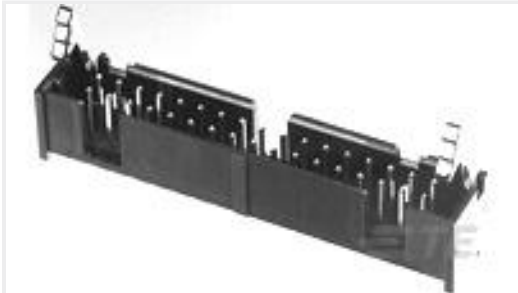


Power Contacts(260)

Customers Also Bought



TE Part #3-640622-2
02CIR MTA100 FD THR ASSY BLUE



TE Part #1-1761606-6
IDC LOW PRO HDR 60P VERT LA



TE Part #213849-1
CPC PLUG ASSEMBLY SIZE 17-16



TE Part #3234330001
RPS-1K-16-10/2.0-4



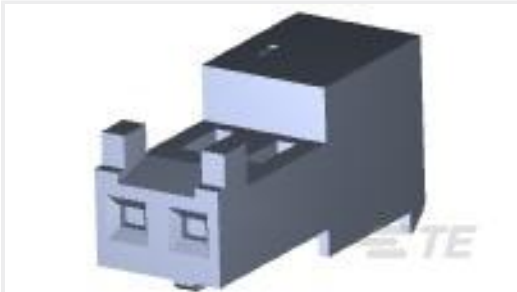
TE Part #211903-1
CMC DUST CAP ASSM SIZE 22



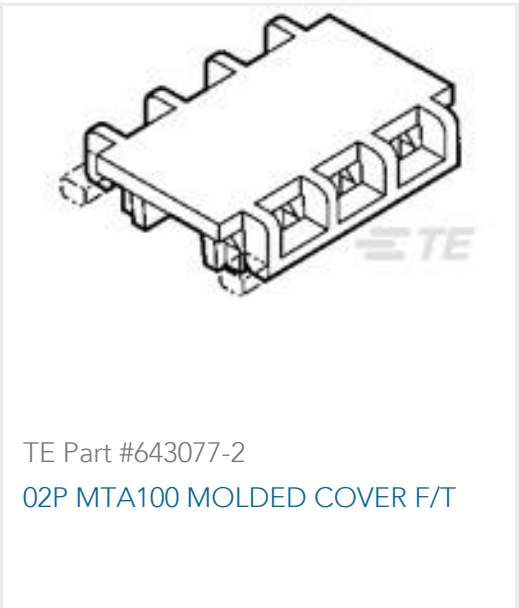
TE Part #66399-4
III+ SKT,24-20,30AU/FL,LP



TE Part #640911-1
RECEPT,PIDG FASTON 22-18 205



TE Part #3-643816-2
02P MTA100 CONN ASSY POL RIB



Documents

Product Drawings

CPC RECPT ASSEMBLY SIZE 17-16

English

CAD Files

Customer View Model

ENG_CVM_206404-1_C.3d_igs.zip

English

Customer View Model

ENG_CVM_206404-1_C.3d_stp.zip

English

Customer View Model

ENG_CVM_206404-1_C.2d_dxf.zip

English

3D PDF

English

3D PDF

3D

Customer View Model

ENG_CVM_CVM_206404-1_M.2d_dxf.zip

English

Customer View Model

ENG_CVM_CVM_206404-1_M.3d_igs.zip

English

Customer View Model

ENG_CVM_CVM_206404-1_M.3d_stp.zip

English

By downloading the CAD file I accept and agree to the [Terms and Conditions](#) of use.

Product Specifications

Application Specification

English

Agency Approvals

UL Report

English

