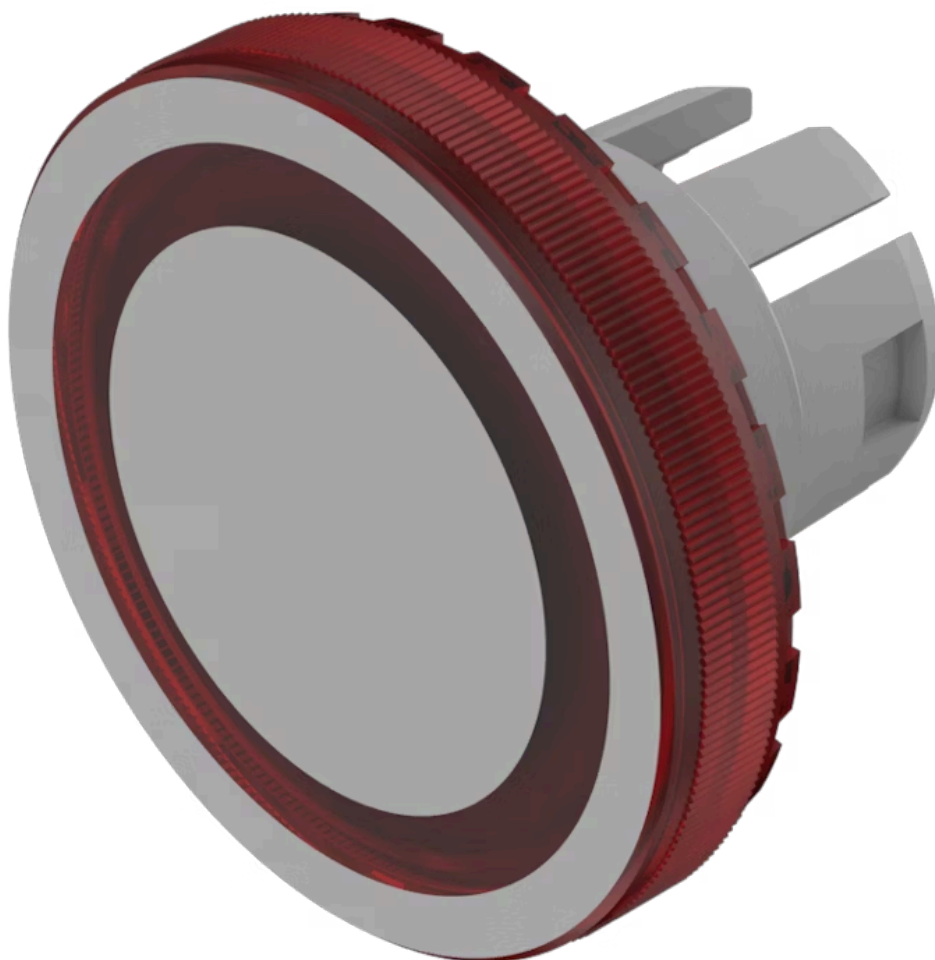


Lens

61-
9643.201

Distribution by
Rs-online



<https://rs-online.eao.com/p/61-9643.201>

Your product:



61-9643.201 Lens

FRONT

Front form: Round

OPERATING-/INDICATION PART

Lens colour: Red

Lens material: Plastic

Lens illumination: Illuminated

Lens shape: Flush

Lens optics: transparent

Symbol: Ring

Shape of illumination: Ring

MECHANICAL CHARACTERISTIC

Mechanical lifetime: 2 Mil. operations

Weight: 0.002 kg

CERTIFICATE

REACH: REACH compliant

RoHS: RoHS compliant

OTHER

Short Description: Lens, Ø 19.7 mm, Illuminated, Ring, Red, Flush, Plastic

Dimension: Ø 19.7 mm

Hints:

The silvery coat is being applied on the lens (screen print) with an additional protective lacquer. Further information see Technical data, Chemical and mechanical tests:, 1. Wipe resistance according to EN 61058-1 section 8.9 (Petrol/gasoline, distilled water, diluted alcohol), 2. Graffiti-Killer Test, 3. Railway cleaning agents (Walo), 4. Damp/dry heat durability, 5. UV test according to EN 60068-2-5/56 days