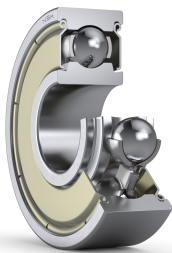




624ZZ1

Extra Small Ball Bearings and Miniature Ball Bearings Metric Series



Boundary Dimensions

d	4	mm	Bore diameter
D	13	mm	Outside diameter
B	5	mm	Width
r1 (min.)	0.2	mm	Chamfer dimension

Basic Load Ratings

Cr	1430	N	Basic dynamic load rating
C0r	485	N	Basic static load rating

Speeds

Grease	40000	min-1	Grease lubrication
--------	-------	-------	--------------------

Abutment and Fillet Dimensions

db (max.)	6	mm	Diameter of shaft abutment
Db (max.)	11.3	mm	Diameter of housing abutment
rb (max.)	0.2	mm	Radius of shaft or housing fillet

Additional information

z	7		Number of Balls
Dw	2.381	mm	Ball Diameter

Mass

Mass approx.	0.00304	kg	Mass approx.
--------------	---------	----	--------------

