

ST-REL2-KG 24/1AU - Relay connectors



2823722

<https://www.phoenixcontact.com/in/products/2823722>

Please be informed that the data shown in this PDF document is generated from our online catalog. Please find the complete data in the user documentation. Our general terms of use for downloads are valid.



Relay connector, equipped with miniature switching relay, contacts (AgPd60): small loads, 1 N/O contact, input voltage 24 V AC/DC, with light indicator, can be plugged on basic termination blocks

Commercial data

Item number	2823722
Packing unit	10 pc
Minimum order quantity	1 pc
Sales key	*****
Product key	DK61B2
Catalog page	Page 87 (IF-2005)
GTIN	4017918077549
Weight per piece (including packing)	34.79 g
Weight per piece (excluding packing)	34.79 g
Customs tariff number	85364190
Country of origin	DE

ST-REL2-KG 24/1AU - Relay connectors



2823722

<https://www.phoenixcontact.com/in/products/2823722>

Technical data

Product properties

Product type	Relay Module
Operating mode	100% operating factor
Mechanical service life	approx. 2×10^7 cycles

Data management status

Date of last data management	02.05.2024
------------------------------	------------

Electrical properties

Maximum power dissipation for nominal condition	0.5 W
Test voltage (Winding/contact)	2.5 kV AC (50 Hz, 1 min., winding/contact)

Input data

Coil side

Nominal input voltage U_N	24 V AC/DC
Input voltage range	19.2 V AC/DC ... 26.4 V AC/DC (20 °C)
Drive and function	monostable
Drive (polarity)	polarized
Typical input current at U_N	21 mA
Typical response time	7 ms (with DC)
Typical release time	11 ms (with DC)
Protective circuit	Bridge rectifier, varistor
Operating voltage display	yes

Output data

Switching

Contact switching type	1 N/O contact
Type of switch contact	Double contact
Contact material	AgPd60, hard gold-plated
Maximum switching voltage	30 V AC 36 V DC
Limiting continuous current	0.5 A
Maximum inrush current	0.2 A
Interrupting rating (ohmic load) max.	5 W (at 24 V DC)

Switching: when the gold layer is destroyed

Note	the following values are applicable if a gold layer is destroyed
Maximum switching voltage	125 V AC 150 V DC
Limiting continuous current	2 A

ST-REL2-KG 24/1AU - Relay connectors



2823722

<https://www.phoenixcontact.com/in/products/2823722>

Maximum inrush current	2 A
Interrupting rating (ohmic load) max.	29 W (at 24 V DC)
	29 W (at 48 V DC)
	29 W (at 60 V DC)
	60 VA (for 250 V AC)

Dimensions

Width	14.6 mm
Height	33 mm
Depth	66.5 mm

Material specifications

Color	green (RAL 6021)
-------	------------------

Environmental and real-life conditions

Ambient conditions

Ambient temperature (operation)	-20 °C ... 50 °C
Ambient temperature (storage/transport)	-20 °C ... 70 °C

Standards and regulations

Standards/regulations	DIN VDE 0110b, Gr. C for 250 V DC
	IEC 60255/DIN VDE 0435 (in relevant parts)
	DIN EN 50178/VDE 0160 (in relevant parts)
	EN 60730/DIN VDE 0631
	DIN VDE 0160 (in relevant parts)

Mounting

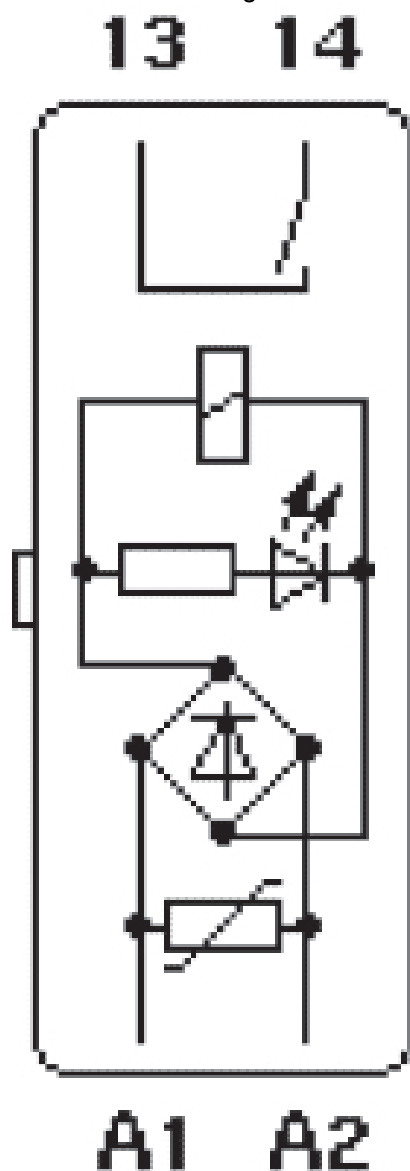
Mounting type	Plug-in mounting
---------------	------------------

2823722

<https://www.phoenixcontact.com/in/products/2823722>

Drawings

Circuit diagram



ST-REL2-KG 24/1AU - Relay connectors



2823722

<https://www.phoenixcontact.com/in/products/2823722>

Classifications

ECLASS

ECLASS-11.0	27371601
ECLASS-12.0	27371601
ECLASS-13.0	27371601

ETIM

ETIM 9.0	EC001437
----------	----------

UNSPSC

UNSPSC 21.0	39122300
-------------	----------

ST-REL2-KG 24/1AU - Relay connectors



2823722

<https://www.phoenixcontact.com/in/products/2823722>

Environmental product compliance

EU RoHS

Fulfills EU RoHS substance requirements	Yes
Exemption	7(a), 7(c)-I

China RoHS

Environment friendly use period (EFUP)	EFUP-50
	An article-related China RoHS declaration table can be found in the download area for the respective article under "Manufacturer declaration". For all articles with EFUP-E, no China RoHS declaration table issued and required.

EU REACH SVHC

REACH candidate substance (CAS No.)	Lead(CAS: 7439-92-1)
SCIP	ba2aa04e-f76e-49ef-aa1a-f626d2751414

ST-REL2-KG 24/1AU - Relay connectors

2823722

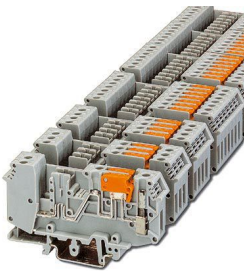
<https://www.phoenixcontact.com/in/products/2823722>

Accessories

URELG 2-PMTK - Basic terminal block

2820835

<https://www.phoenixcontact.com/in/products/2820835>

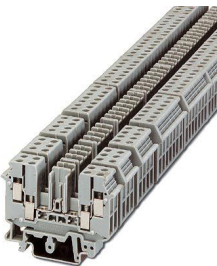


Basic terminal blocks with test pick-off on both sides and knife disconnection for NS 32 and NS 35/7,5 DIN rail, with end cover, for ST-REL..., ST-OV..., and ST-OE... plugs, 2-pos.

UDK-RELG 2 - Basic terminal block

2777030

<https://www.phoenixcontact.com/in/products/2777030>



Basic terminal blocks with test pick-off on both sides and double connections with the same potential for NS 32 and NS 35/7,5 DIN rail, with end cover, for ST-REL..., ST-OV..., and ST-OE... plugs, 2-pos.

ST-REL2-KG 24/1AU - Relay connectors



2823722

<https://www.phoenixcontact.com/in/products/2823722>

URELG 2 - Basic terminal block

2820262

<https://www.phoenixcontact.com/in/products/2820262>

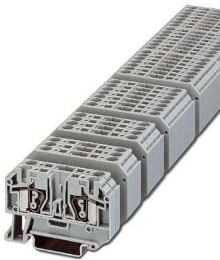


Basic termination blocks with screw connection for NS 32 and NS 35/7.5 DIN rail, with end cover, for ST-REL..., ST-OV... and ST-OE... plugs, 2-pos.

ZFK-RELG 2 - Basic terminal block

2829904

<https://www.phoenixcontact.com/in/products/2829904>



Basic termination blocks with spring-cage connection for NS 35/7.5 DIN rail, with end cover, for ST-REL..., ST-OV... and ST-OE... plugs, 2-pos.

Phoenix Contact 2025 © - all rights reserved

<https://www.phoenixcontact.com>

PHOENIX CONTACT (I) Pvt. Ltd.

A-58/2, Okhla Industrial Area, Phase - II, New Delhi-110 020

+91.1275.71420

info@phoenixcontact.co.in