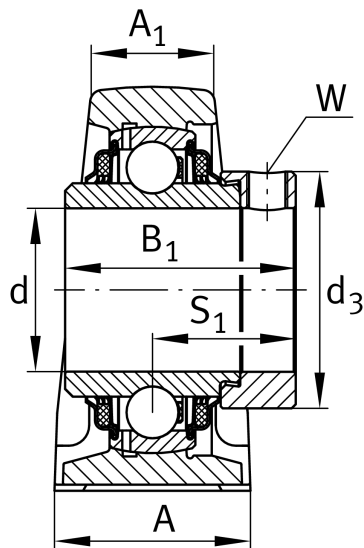
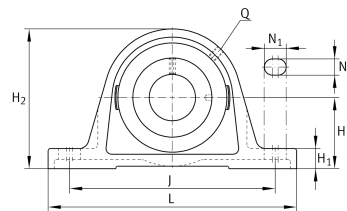
**TASE80-XL** **Plummer block housing unit**

Plummer block housing units TASE, cast iron housing, radial insert ball bearing with eccentric locking collar, T seals

X-life**Technical information****Your current product variant**

Material	GG	Grey cast iron
----------	----	----------------

Main Dimensions & Performance Data

d	80 mm	Bore diameter
L	290 mm	Length total
H ₂	175 mm	Height
≈m	8.6 kg	Weight

Mounting dimensions

J	232 mm	Distance fixing bore
N	26 mm	Width (slot)
N ₁	34 mm	Length (slot)

Dimensions

H	89 mm	Distance shaft axis
A	78 mm	Width (base)
A ₁	55 mm	Width (head)
H ₁	30 mm	Height (base)
B ₁	70.7 mm	Locking collar total width
S ₁	47.3 mm	Distance of raceway to locking collar
Q	M6	Connection thread for lubrication



Additional information

ASE16	Housing
GE80-XL-KTT-B	Bearing designation

Temperature range

T _{min}	-20 °C	Operating temperature min.
T _{max}	120 °C	Operating temperature max.