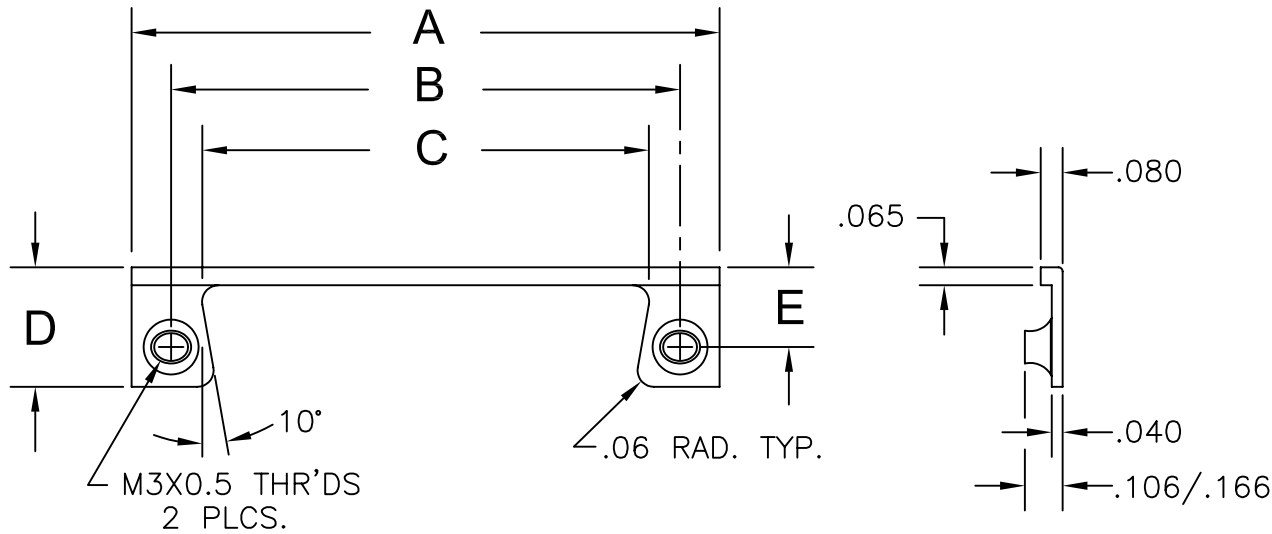



REV	DESCRIPTION	DATE	APPRVD



PART NO.	SHELL SIZE	A ±.010	B ±.003	C ±.010	D ±.010	E ±.010
ATDM-E	9	1.272	.984	.784	.435	.290
ATDM-A	15	1.600	1.312	1.112	.435	.290
ATDM-B	25	2.140	1.852	1.652	.435	.290
ATDM-C	37	2.788	2.500	2.300	.435	.290
ATDM-D	50	2.694	2.406	2.206	.515	.345

**SPECIFICATIONS :**

1. RETAINER MATERIAL - 6061-T6 ALUMINUM.
2. RETAINER FINISH - ALODINE PER MIL-C-5541.
3. NUT, SELF LOCKING - CORROSION-RESISTING STEEL,PASSIVATED PLUS DRY FILM LUBRICANT. NUTS MEET MIL-N-45938/7.

UNLESS OTHERWISE SPECIFIED DIMENSIONS ARE IN INCHES TOLERANCES ARE: ANGLES ± FRACTIONS ± DECIMALS .XX ± .XXX ±		CONTRACT NO.				
		PREPARED	BS	1/11		
NEXT ASSY		USED ON		APPROVED	<p style="text-align: center;">NUT PLATE D'SUB SERIES, M3 METRIC NUTS</p>	
APPLICATION				RELEASE		
				SIZE	CODE IDENT NO.	DRAWING NO.
				B	0A554	ATDM-X
				SCALE: NONE		SHT 10F 1