



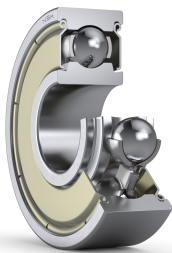
PRODUCT DATASHEET

Datasheet creation date: 2025/07/09 7:51 (UTC)



623ZZ

Extra Small Ball Bearings and Miniature Ball Bearings Metric Series



Boundary Dimensions

d	3	mm	Bore diameter
D	10	mm	Outside diameter
B	4	mm	Width
r1 (min.)	0.15	mm	Chamfer dimension

Basic Load Ratings

Cr	695	N	Basic dynamic load rating
C0r	218	N	Basic static load rating

Speeds

Grease	50000	min-1	Grease lubrication
--------	-------	-------	--------------------

Abutment and Fillet Dimensions

db (max.)	4.3	mm	Diameter of shaft abutment
Db (max.)	8	mm	Diameter of housing abutment
rb (max.)	0.15	mm	Radius of shaft or housing fillet

Additional information

z	7		Number of Balls
Dw	1.588	mm	Ball Diameter

Mass

Mass approx.	0.00166	kg	Mass approx.
--------------	---------	----	--------------

