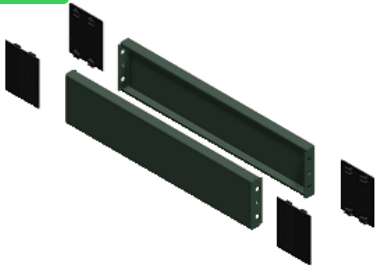


Product data sheet

Specifications



Spacial SF side panel plinth - 100x600x1200 mm

NSYSPS12100

Overview

Lead time Usually Ships within 4 Weeks

Main

Range	Spacial
Accessory / separate part category	Enclosure accessory
Product or component type	Plinth side panel
Anwendung	Electronic application
Nennmaße des Gehäuses	-
Device composition	fixing elements 4 corner cover 2 side panel
Range compatibility	Spacial SF
Mounting support	Front plinth

Complementary

Fixing mode	By screws
Colour	Grey (RAL 7022)
Surface finish	Epoxy-polyester powder
Height	100 mm
Width	1200 mm nominal:

Environment

IP degree of protection	IP30 (complete plinth)
IK degree of protection	IK10

Packing Units

Unit Type of Package 1	PCE
Number of Units in Package 1	1
Package 1 Weight	3.928 kg
Package 1 Height	5.8 cm
Package 1 width	10.8 cm

Package 1 Length	104.8 cm
------------------	----------

Offer Sustainability

Sustainable offer status	Green Premium product
--------------------------	-----------------------

REACH Regulation	REACH Declaration
------------------	-----------------------------------

REACH free of SVHC	Yes
--------------------	-----

EU RoHS Directive	Pro-active compliance (Product out of EU RoHS legal scope) EU RoHS Declaration
-------------------	---

Mercury free	Yes
--------------	-----

RoHS exemption information	Yes
----------------------------	---------------------

China RoHS Regulation	China RoHS declaration Product out of China RoHS scope. Substance declaration for your information
-----------------------	---

Environmental Disclosure	Product Environmental Profile
--------------------------	---

Contractual warranty

Warranty	18 months
----------	-----------
