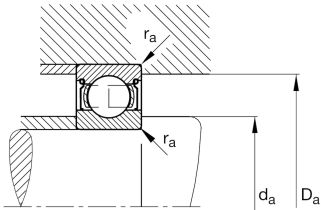
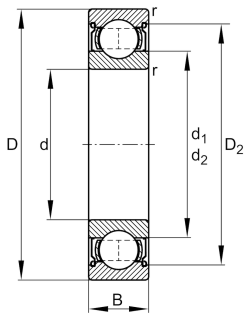


**FAG****6026-2Z-C3**

## Deep groove ball bearing

Deep groove ball bearing 60...-2Z, single row, shields, steel sheet metal cage

## Technical information



## Your current product variant

Sealing	2Z	Non-contact shield on both sides
Cage	JN	Steel sheet metal
Tolerance class	PN	Normal (PN)
Dimensional / heat stabilization	S0	Rings dimensional stabilized up to 150°
Lubricant	GA13	Ball bearing and insert bearing grease, standard for D>62mm
Radial internal clearance	C3 (Group 3)	Internal clearance larger than CN
Bore type	Z	Cylindrical

## Main Dimensions &amp; Performance Data

d	130 mm	Bore diameter
D	200 mm	Outside diameter
B	33 mm	Width
C <sub>r</sub>	113,000 N	Basic dynamic load rating, radial
C <sub>0r</sub>	101,000 N	Basic static load rating, radial
C <sub>ur</sub>	5,000 N	Fatigue load limit, radial
n <sub>G</sub>	3,800 1/min	Limiting speed
n <sub>gr</sub>	4,350 1/min	Reference speed
m	3.33 kg	Weight



Mounting dimensions

$d_{a\min}$	138.8 mm	Minimum diameter shaft shoulder
$D_{a\max}$	191.2 mm	Maximum diameter of housing shoulder
$r_{a\max}$	2 mm	Maximum fillet radius

Dimensions

$r_{\min}$	2 mm	Minimum chamfer dimension
$D_1$	177.92 mm	Shoulder diameter outer ring
$D_2$	182.08 mm	Caliber diameter outer ring
$d_1$	152.85 mm	Shoulder diameter inner ring

Temperature range

$T_{\min}$	-20 °C	Operating temperature min.
$T_{\max}$	120 °C	Operating temperature max.

Calculation factors

$f_0$	15.8	Calculation factor
-------	------	--------------------

Characteristics

	Radial load
	Axial load in one direction
	Axial load in two directions
	Lifetime lubrication, freedom from maintenance
	Grease Lubrication
	Sealed on both sides