

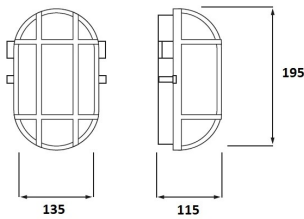


RoBust Bulkhead E27 Oval L Grey IP44 Max 100W

Article number: 145970

BAl Bulkhead RoBust E27 Oval L Grey IP44 IK06 Outdoor Max 100W CLII 195x135x115mm Two cable entries Bulleye / Bullseye

The nostalgic lamp is back from never having been away. Tis ageless bulkhead, bullseye, bully as it is often called is made with a grey housing. Since it is rated IP44 this timeless fixture can bothe be used indoor and outdoor. It can both be mounted on wall and ceiling. The prismatic tempered glass is protected by a metal basket. The RoBust is supplied without a light source (Max 100W incandescent bulb) and without a cable, but the RoBust has a cable entry on both sides of the fixture.



General ETIM properties

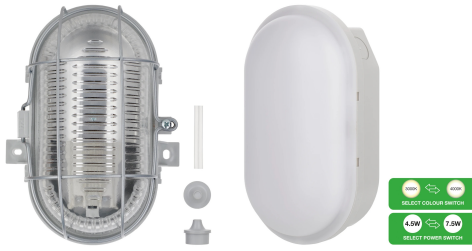
ETIM group	Luminaires
ETIM class	Ceiling-/wall luminaire
Name	RoBust Bulkhead E27 Oval L Grey IP44 Max 100W
Brand	Bailey
Productseries	BaiLum ceiling/wall
Producttype	RoBust Bulkhead

ETIM specifications

Lamp holder	E27
Housing colour	Grey
With movement sensor	No
With light sensor	No
Width [mm]	135
Length [mm]	195
Nominal voltage [V]	230 - 230
Impact strength	IK06
Dimmable	No
Suitable for suspended mounting	No
Suitable for ceiling mounting	Yes
Suitable for built-in mounting	No
Suitable for surface mounting	Yes
Suitable for light line configuration	No
Suitable for workplace according to EN 12464-1	No
Lamp type	LED exchangeable
With light source	No
Suitable for emergency lighting	No
Suitable for number of light sources	1
Housing material	Plastic
Surface protection housing	Untreated
Material cover	Structured glass
Type of grid	None
Voltage type	AC
Type of control gear	Not required
With control gear	No
Exchangeable control gear	No
Dimming 0-10 V	No
Dimming 1-10 V	No
Dimming DALI-2	No
Dimming DALI	No
Dimming DMX	No
Dimming DSI	No
Dimming potentiometer (integrated)	No
Dimming manufacturer's proprietary system	No
Dimming mains voltage modulation	No
Dimming phase cut-off (trailing edge)	No
Dimming phase cut-on (leading edge)	No
Dimming programmable	No
Dimming RF	No
Dimming Touch and Dim	No

Dimming Zigbee	No
Dimming with push-button	No
Light distributor	Reflector
Light distribution	Symmetric
Beam angle	5-10° - Extreme narrow beam
Light outlet	Direct
Degree of protection (NEMA)	Other
Protection class according to IEC 61140	II
Luminaire with limited surface temperature, sign "D" according to EN 60598-2-24	No
Covering of the luminaire with thermally insulating material possible	No
With air slots	No
Filament test according to IEC 60695-2-11	None
Suitable for lamp power [W]	100 - 100
Max. system power [W]	100
Constant light output (CLO)	No
Height/depth [mm]	115
Type of wiring	Suitable for loop-through wiring
Number of poles	2
Conductor cross section [mm ²]	1.5
Connection type	Screwed terminal
Colour of light adjustable	No
Luminous flux adjustable	No
Beam angle adjustable	No
Operation by Bluetooth	No
Compatible with Apple HomeKit	No
Compatible with Google Assistant	No
Compatible with Amazon Alexa	No
IFTTT support available	No
Suitable for wall mounting	Yes
Compatible with Casambi	No
Meets min. EIA lifetime criterion L90 (at 50,000 hours at tq = 25 °C)	No
Suitable for clamp-mounting	No
With mounting material	Yes
Containing product according to 2019/2020/EU	No
Degree of protection (IP), rear side	Other
Degree of protection (IP), front side	IP44
Emergency power supply system	None
Emergency function monitoring system	None
With switch	No
With presence detector	No
Ball-proof according to DIN 18032-3	No

Alternative articles



145969
RoBust Bulkhead E27 Oval S
Grey IP44 Max 60W

146041
LED Bulkhead Switch 4.5W-
7.5W 420-750lm 830-840 Oval
Grey

Complementary articles



145687
LED FIL XTRA A60 E27 4W
(60W) 840lm 830 Clear Class A

145046
LED FIL A60 E27 DIM 4W (35W)
400lm 827 Clear